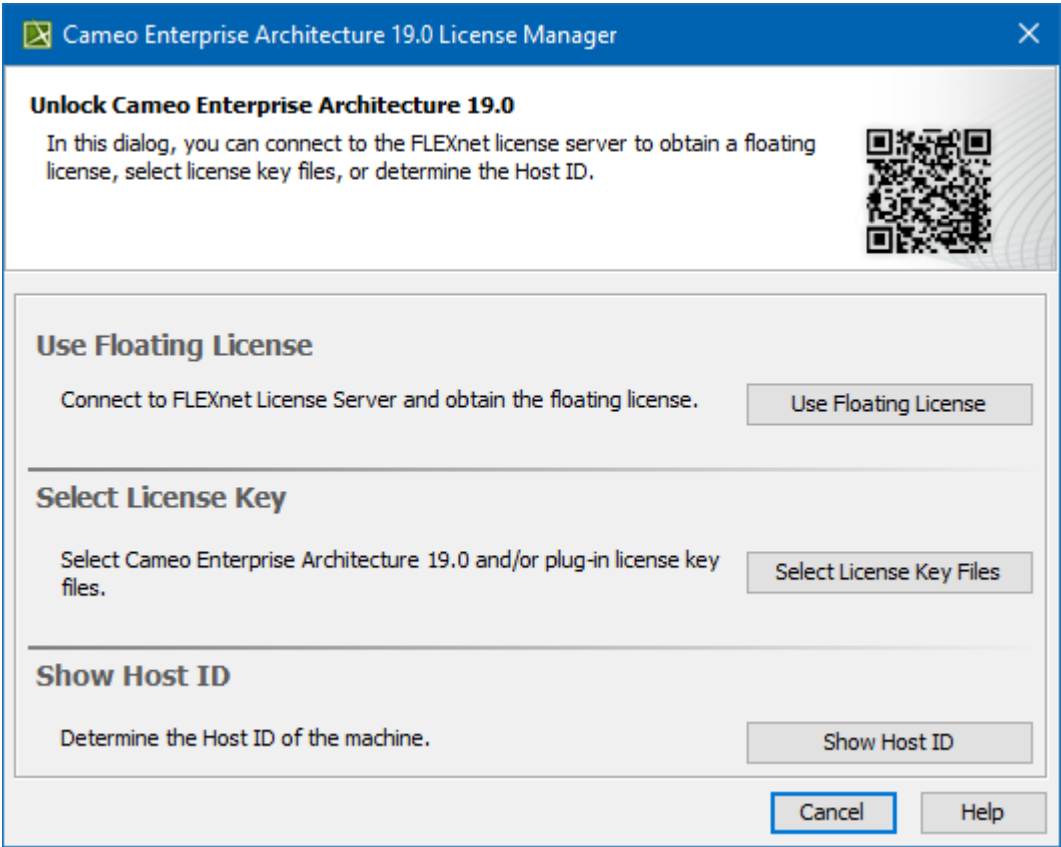


# License Manager dialog

There are two ways to view the **License Manager** dialog:

- Starting the modeling tool for the very first time.
- Opening the dialog from the modeling tool's **Help** menu.

When you start the modeling tool for the first time, you will see the following dialog:



The License Manager dialog

In this dialog, you can select one of the license addition options according to the license you have.

Button name	Description
Use Floating License	If you have the credentials for a Floating license server, click to <a href="#">obtain the Floating license</a> .
Select License Key File	If you have a seat, mobile, or academic license, click to <a href="#">add the license key file</a> .
Show Host ID	<a href="#">Determine the Host ID</a> of your machine to be able to tie it with the license.

When you need to change the license key file or obtain a floating license, you can open the **License Manager** dialog from the modeling tool menu (**Help > License Manager**).