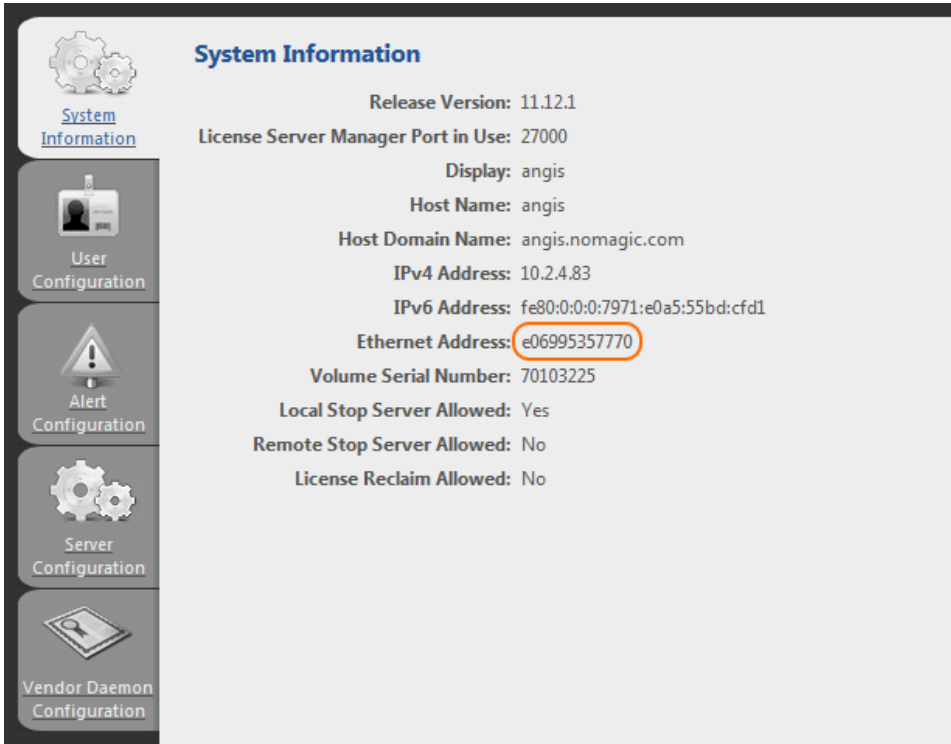


Determine the Host ID of the machine on which the FlexNet license server is installed

To determine the Host ID of the machine on which the FlexNet license server is installed (using *lmadmin*)

1. Connect to the FlexNet server. The default address is <http://localhost:8090> or use your server name (<http://<server name>:8090>).
2. Click **Administration** at the top-right corner of the webpage. When prompted to sign in, enter the default administrator's credentials (*admin/admin*).
3. Copy the Host ID displayed as Ethernet Address (as in the following figure).



The *lmhostid* is a command line utility, which prints the Host ID that a FlexNet license server requires on any supported system. The *lmhostid* utility is available as an executable called *lmutil*.

To determine the Host ID of the machine on which the FlexNet license server is installed (using *lmhostid*)

1. Download the *lmutil* for a particular OS from: https://www.magicdraw.com/flexnet_license_server_download/?content=flexnet_license_server_download
2. Run *lmutil* with *lmhostid* parameter from the command line. *lmhostid* displays the default Host ID for the current platform.

For the exact commands for a specific OS refer to: License Administration Guide (Obtaining System Hostids):

- [License Administration Guide. FlexNet Publisher 2014 R1 \(11.12.1\)](#)
- [License Administration Guide. FlexNet Publisher 2019 R2 \(11.16.4\)](#)



If two or more Ethernet addresses are available on the particular machine, the first one printed by the Host ID command should be used.