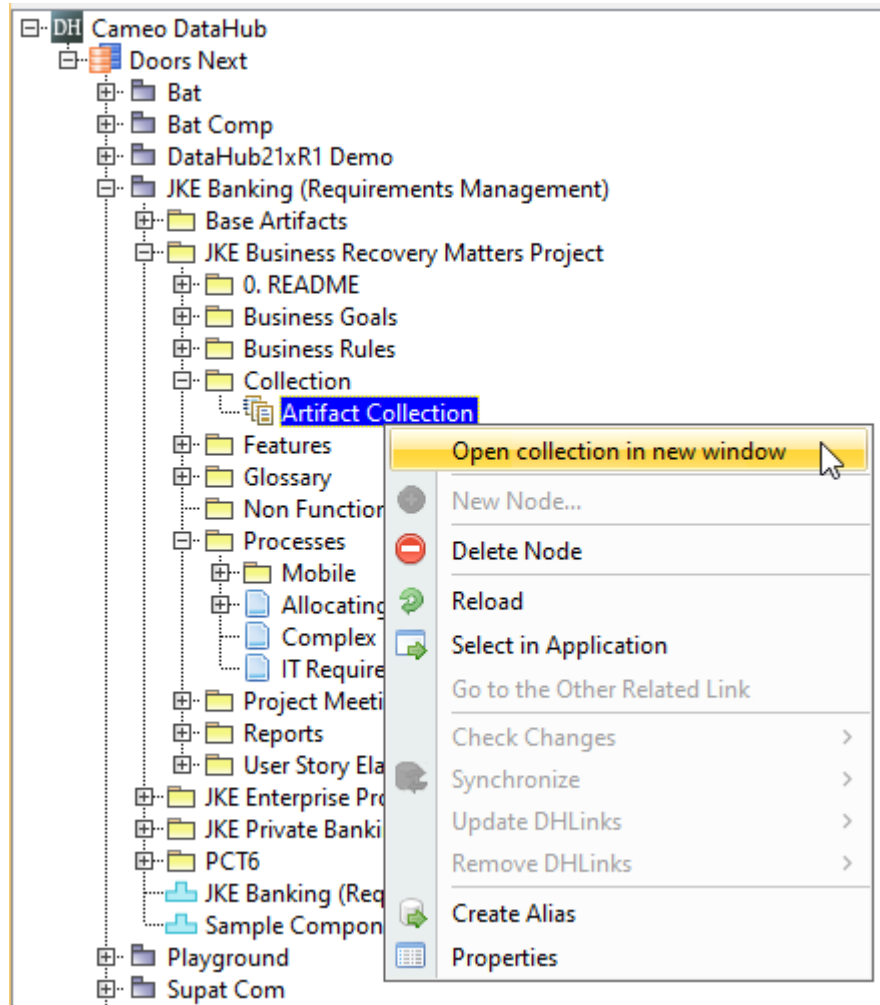


Collection nodes in DOORS Next Generation

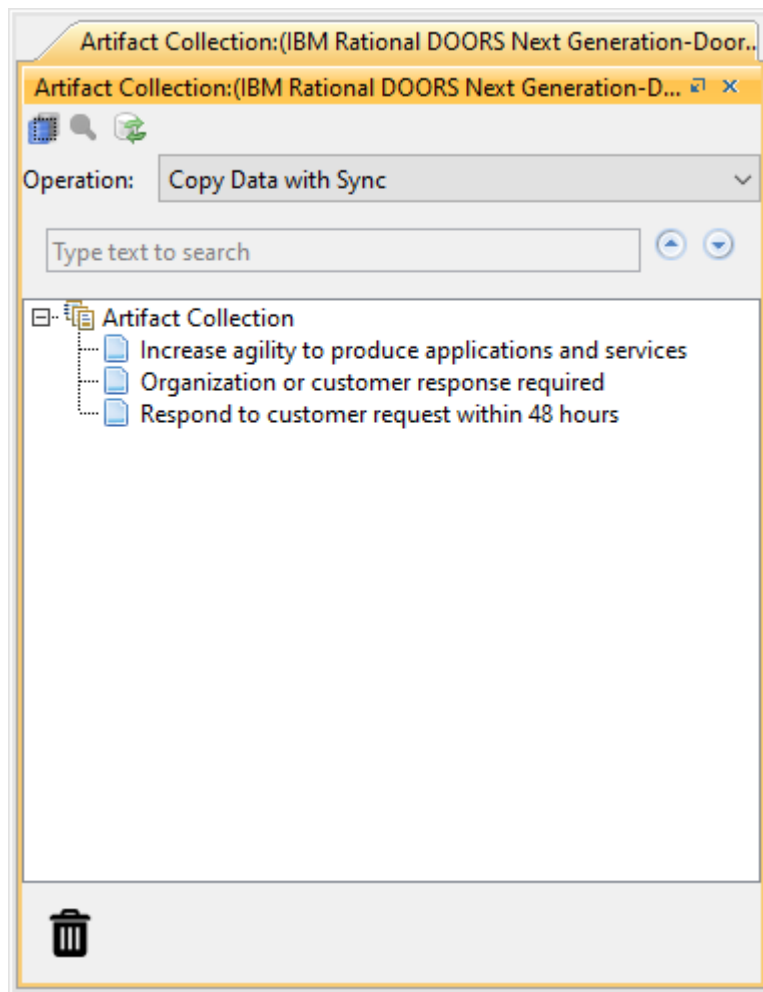
You can work with an artifact in a Collection via a new Collection tab that displays items of the Collection artifact by using the **Open collection in new window** command.

To open a Collection artifact in a new tab

- Right-click a Collection element in DataHub Explorer and select **Open collection in new window**.



The Open collection in new window command.



An open DOORS Next Generation Collection artifact tab in DataHub Explorer.

The new Collection artifact tab that shows items of the Collection artifact will open in DataHub Explorer.



Note

- DataHub records the open Collection artifact tab as a new Alias tree, thus allowing you to directly open the DOORS Next Generation Collection artifact tab by clicking **Tools > DataHub > Alias Manager** and selecting the Collection from the list at the next time you connect the DOORS Next Generation Data Source.
- All associated DHLinks created will be available only within the Collection artifact tab.