


Logging into TWCloud server

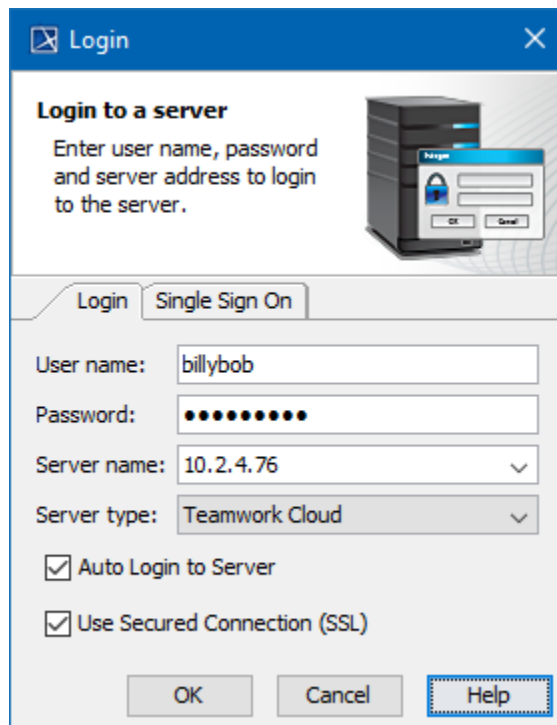
Before logging in to any of No Magic's servers, you must:

- Have a user account on the server.
- Be sure the server is running.
- Ensure the server and the client application use the same Java version. Small Java version updates may differ.

 The server Java version 1.8.0_45 will work with the client Java version 1.8.0_51.

To log in to a server

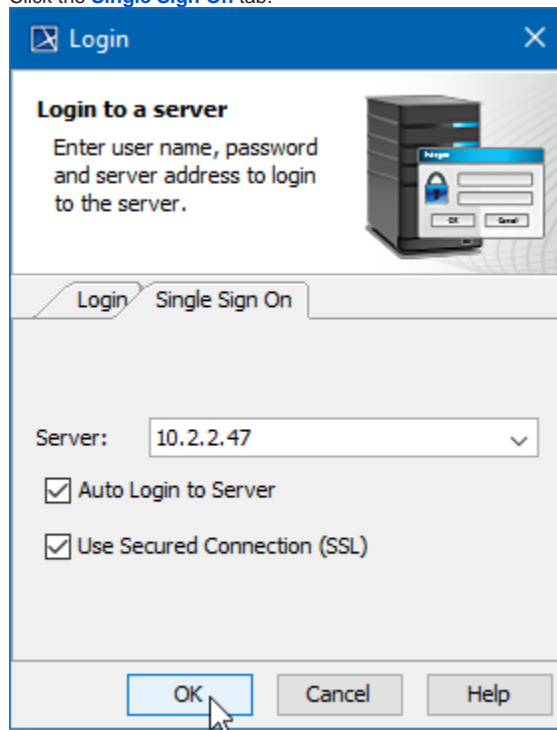
1. From the **Collaborate** menu, select **Login**. The **Login** dialog opens.
2. Login to a server:
 - To login using "username/password" authentication:
 - i. Click the **Login** tab.
 - ii. Type your user name and password.



The screenshot shows a Windows-style dialog box titled "Login". It has a blue header bar with a close button (X) on the right. The main area has a light gray background. At the top left, it says "Login to a server" in bold, followed by "Enter user name, password and server address to login to the server." To the right of this text is a small icon of a server rack with a login window on it. Below the text, there are two tabs: "Login" (which is selected) and "Single Sign On". Under the "Login" tab, there are four input fields: "User name:" with the text "billybob", "Password:" with ten black dots, "Server name:" with the text "10.2.4.76" and a dropdown arrow, and "Server type:" with the text "Teamwork Cloud" and a dropdown arrow. Below these fields are two checkboxes: "Auto Login to Server" (checked) and "Use Secured Connection (SSL)" (checked). At the bottom of the dialog are three buttons: "OK", "Cancel", and "Help" (which is highlighted with a blue border).

- For users having a single ID and password for multiple software systems (valid only for Teamwork Cloud Server):

- i. Click the **Single Sign On** tab.



3. Provide the server name (address) and select server type. If you need to specify a server port, type `<server name> : <port number>`, for example `10.2.2.47:3579`.

For Teamwork Cloud Server users

If a **Single Sign On** property is selected to login, the Teamwork Cloud Server is automatically selected as a type.

4. If you want the client application to remember your credentials and automatically log in to the server next time upon starting the client application, select the **Auto Login to Server** check box.
5. If you need to connect to the server using the SSL connection, select the **Use Secured Connection (SSL)** check box.



The SSL connection must be established on both the server and the client side.

6. Click **OK**.
7. Wait while you are connected to the server, and then you can start performing collaborative tasks.

To log out of the server

- From the **Collaborate** menu, select **Logout**.

Related pages