

Operational States

Description

The Operational States (Op-St) view captures the state-based behavior of an operational Operational Performer. The Operational States diagram models how and why an element changes in response to the environment. The diagram represents the sets of events to which the Activities respond (by taking an action to move to a new state) as a function of its current state. Each transition specifies an event and an action.

An Operational States view (Op-St) can be used to describe the detailed sequencing of activities or work flow in the business process. It is particularly useful for describing critical sequencing of behaviors and timing of operational activities that cannot be adequately described in the [Operational Process Flow diagram](#). The Operational States (Op-St) view relates events and states. A change of state is called a transition. Actions may be associated with a given state or with the transition between states in response to stimuli (e.g., triggers and events).

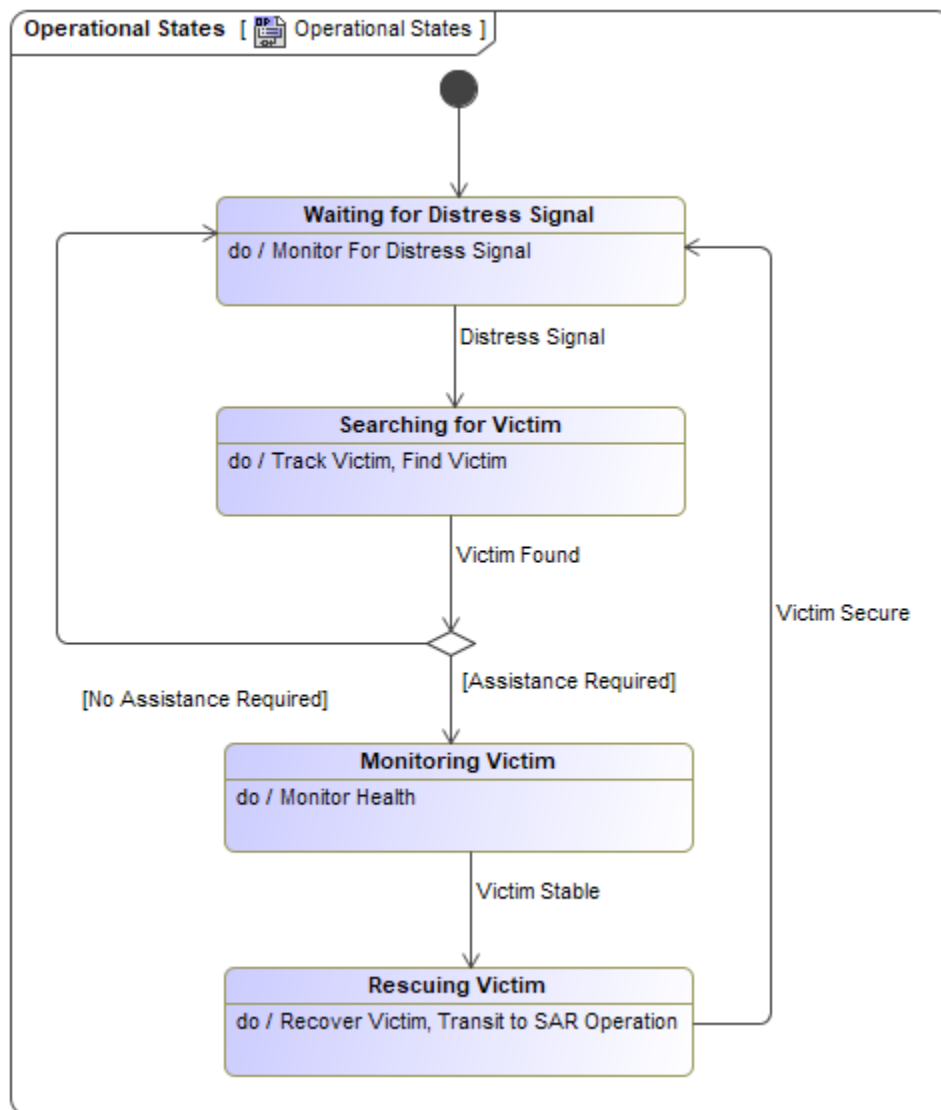
The intended usage of the Operational States (Op-St) view includes:

- Analysis of business events.
- Behavioral analysis.
- Identification of constraints.

Implementation

The Operational States (Op-St) view is represented by the Operational States diagram that is based on a UML State Machine diagram.

Sample



An example of the Operational States diagram

Related elements

- [Operational Agent](#)
- [Operational State Description](#)
- [Operational Performer](#)

Related procedures

- [Allocate Activities to State Internal Behaviors](#)

Related diagrams

- [State Machine diagram](#)