

# Working with Strategic Taxonomy diagram

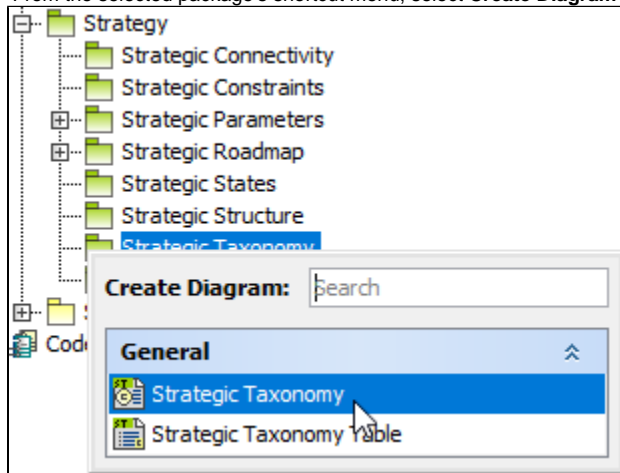
On this page

- [Creating a diagram](#)
- [Creating an element](#)
- [Connect the elements](#)

## Creating a diagram

To create an Strategic Taxonomy diagram

1. In the Containment Tree, select the Strategic Taxonomy and do one of the following:
  - From the selected package's shortcut menu, select **Create Diagram > Strategic Taxonomy**.



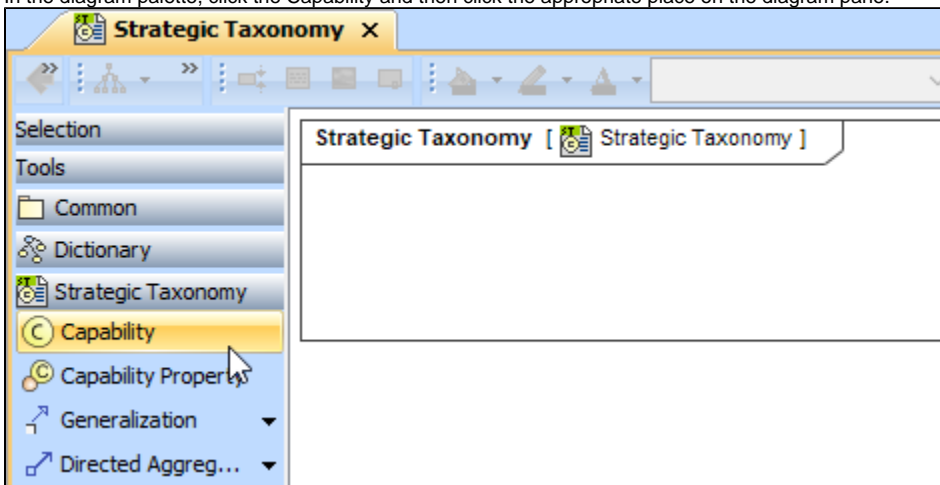
- In the modeling tool's main menu, click **Create Diagram**, search for **Strategic Taxonomy** and select it.
2. Name a diagram or leave it with the default name.

## Creating an element

When the diagram is created, you can start creating the appropriate elements.

To create a Capability in a diagram

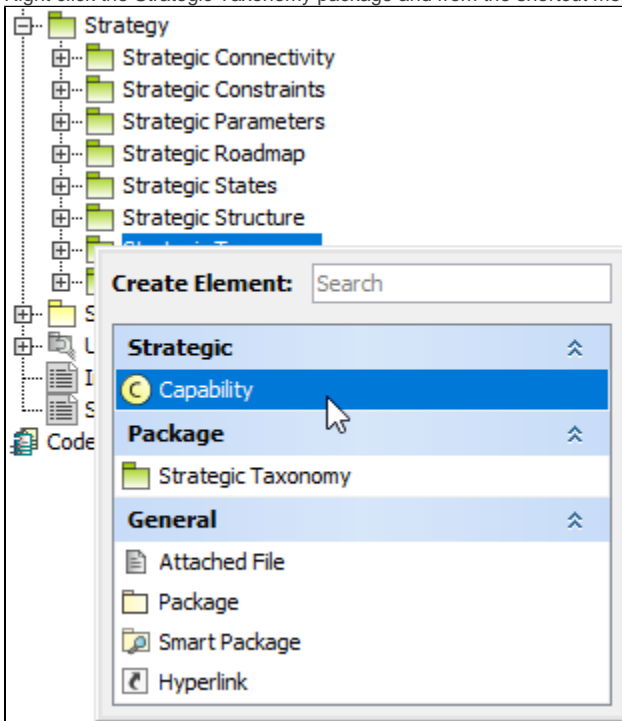
1. In the diagram palette, click the Capability and then click the appropriate place on the diagram pane.



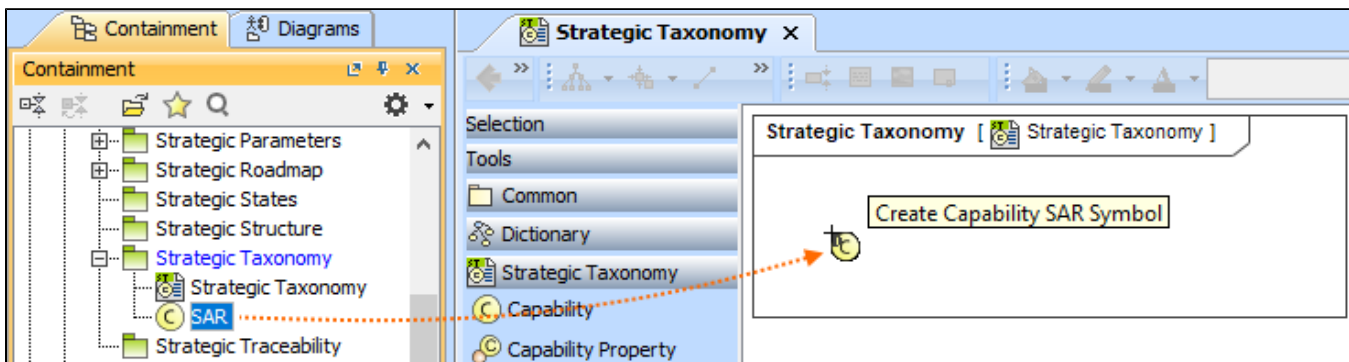
2. Name the element.

To create a Capability in the Containment tree

1. Right click the Strategic Taxonomy package and from the shortcut menu, select **Create Element**. Select the Capability.



2. Name the element.
3. Drag the created element from the Containment tree to the diagram pane.



To create the elements from other resources (e.g. Word, Excel, HTML)

1. Copy a list in your resource.
2. In a diagram, press Ctrl+V and from the **Paste Special** dialog, choose **Element**.
3. From the **Select Type** dialog, choose Capability.

 more information about creating the elements from other resources, see [Creating elements from other resources](#).

## Connect the elements

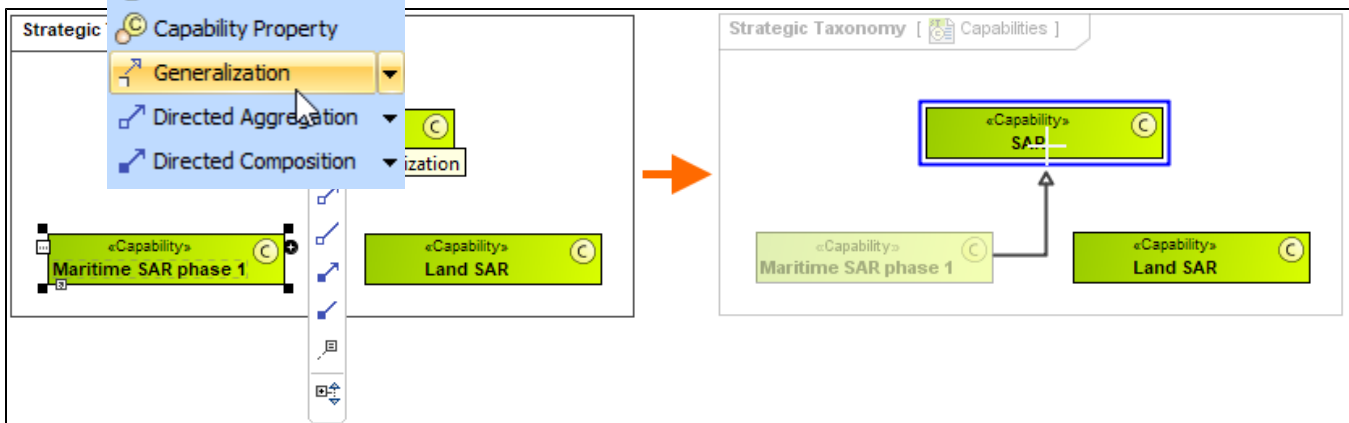
When you have Capability created, you can start connecting them using the Generalization relationship.

To connect the elements with the Generalization relationship

1. Select an element from which the Generalization will be drawn.
2. From the smart manipulator, which appears after you select the element, choose Generalization.

You can also select the Generalization relationship from the diagram palette.

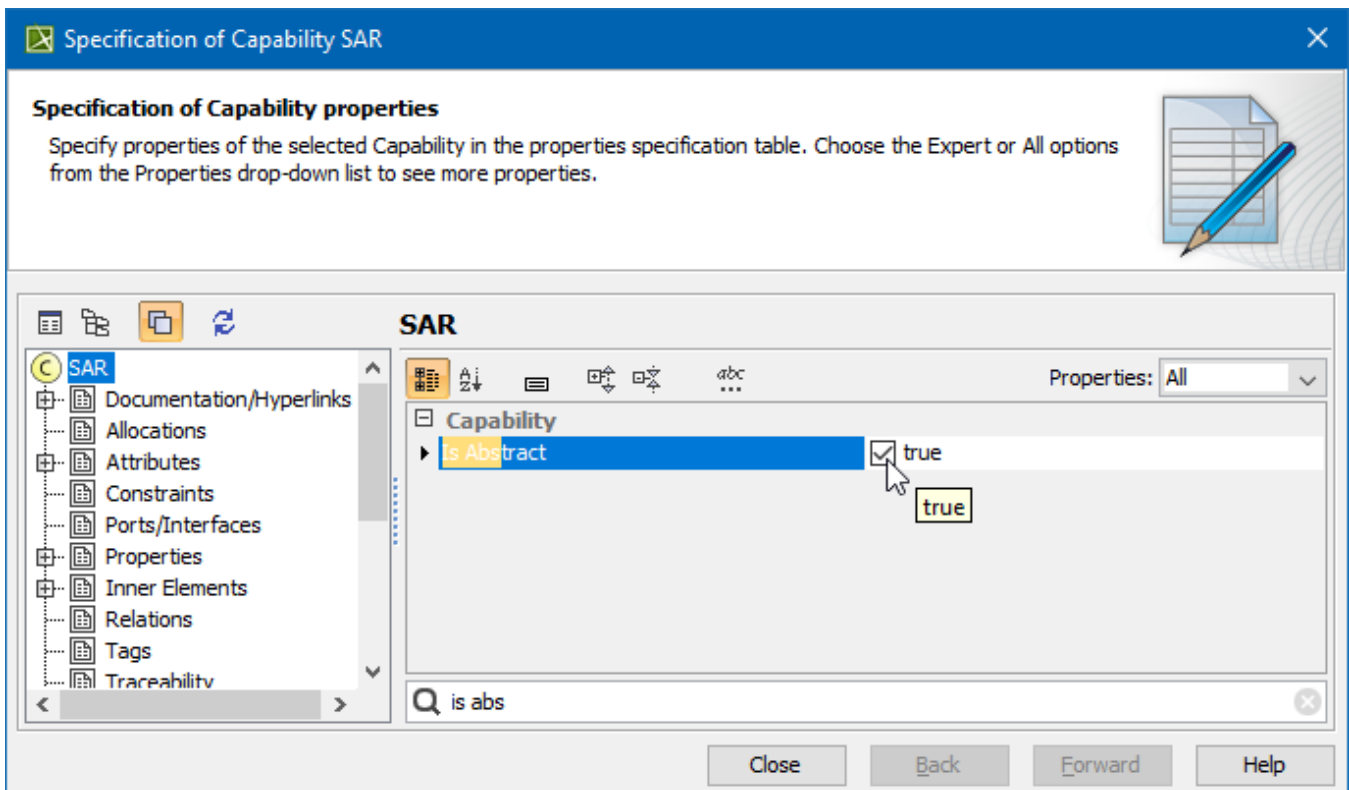
3. Move the mouse over the Generalization relationship and click to finish the action.



If there is a need, you can make the Generalization target element abstract.

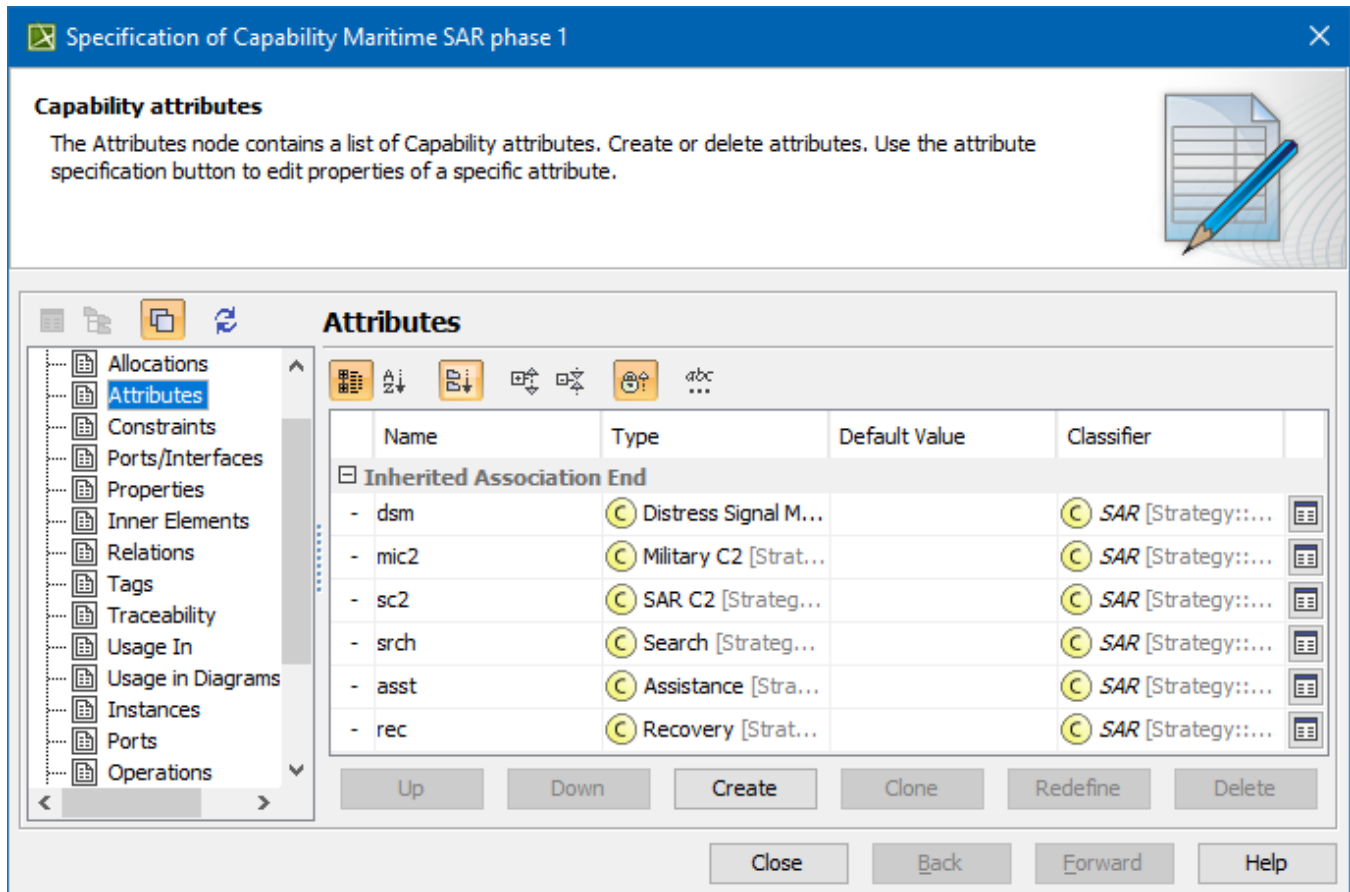
To make an element abstract

1. Select an element and open its [Specification window](#).
2. Make sure that **All** is chosen for **Properties**.
3. Search for **Is Abstract** and set it to **true**.



To view the inherited properties

1. Select an element and open its [Specification window](#).
2. Click Attributes, Properties, or Relations property group.



**Specification of Capability Maritime SAR phase 1**

**Capability attributes**

The Attributes node contains a list of Capability attributes. Create or delete attributes. Use the attribute specification button to edit properties of a specific attribute.

**Attributes**

Name	Type	Default Value	Classifier
<b>Inherited Association End</b>			
- dsm	Distress Signal M...		SAR [Strategy::...
- mic2	Military C2 [Strat...		SAR [Strategy::...
- sc2	SAR C2 [Strateg...		SAR [Strategy::...
- srch	Search [Strateg...		SAR [Strategy::...
- asst	Assistance [Stra...		SAR [Strategy::...
- rec	Recovery [Strat...		SAR [Strategy::...

Up Down Create Clone Redefine Delete

Close Back Forward Help