

Working with Services Structure diagram

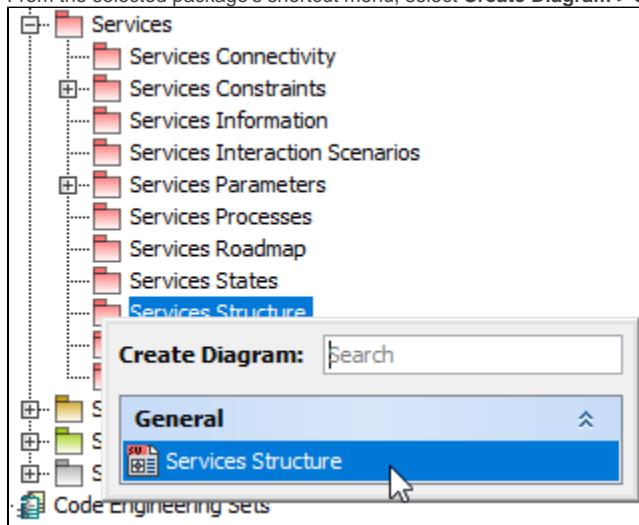
On this page

- [Creating a diagram](#)
- [Creating an element](#)
- [Connecting the Service Specifications](#)
- [Changing the role name and specifying multiplicity](#)
- [Displaying created structure](#)

Creating a diagram

To create an Services Structure diagram

1. In the Containment Tree, select the Services Structure and do one of the following:
 - From the selected package's shortcut menu, select **Create Diagram > Services Structure**.



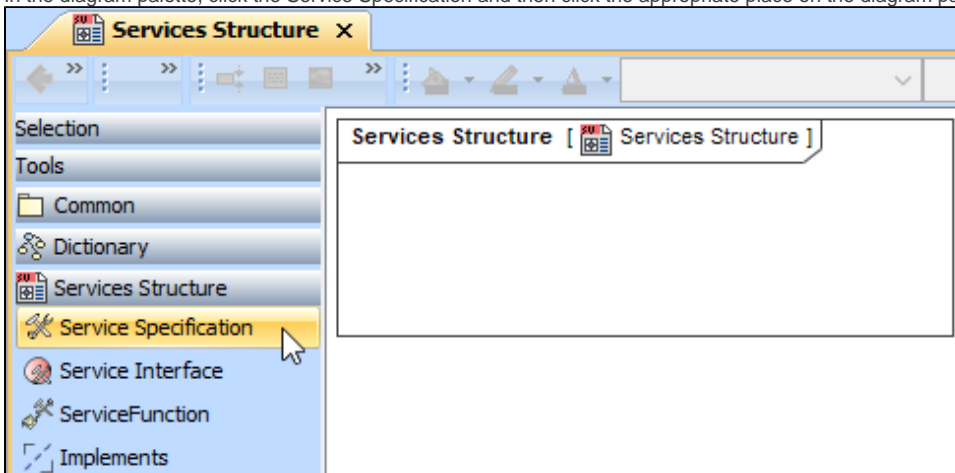
- In the modeling tool's main menu, click **Create Diagram**, search for **Services Structure** and select it.
2. Name a diagram or leave it with the default name.

Creating an element

When the diagram is created, you can start creating the appropriate elements. An example is described using Service Specification element, but the same is valid for other structural elements.

To create an Service Specification in a diagram

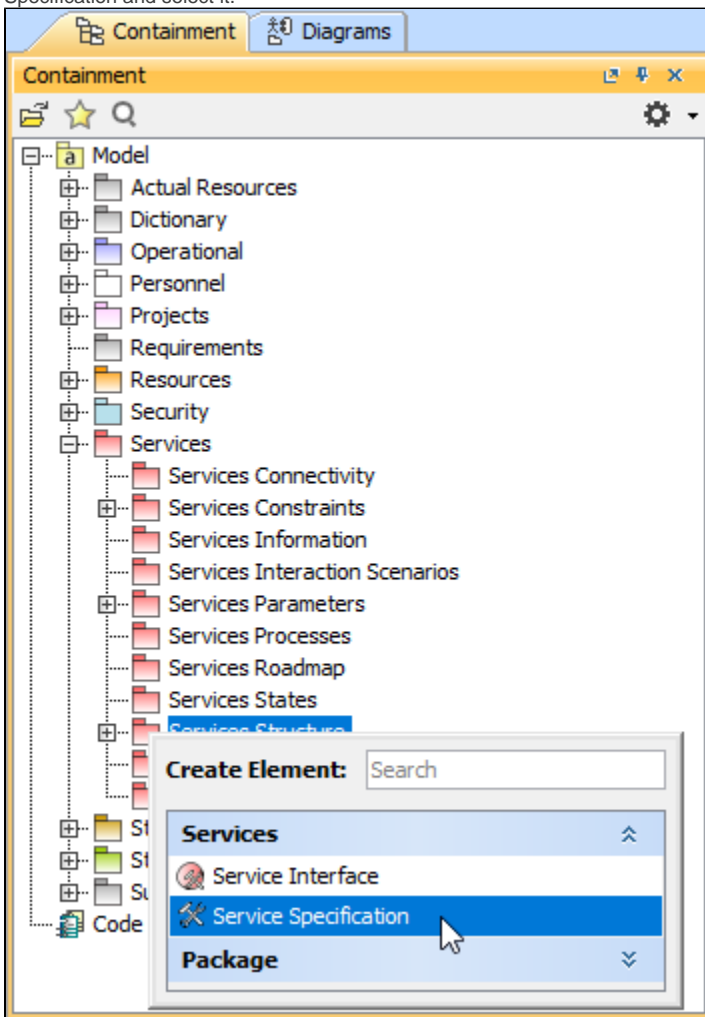
1. In the diagram palette, click the Service Specification and then click the appropriate place on the diagram pane.



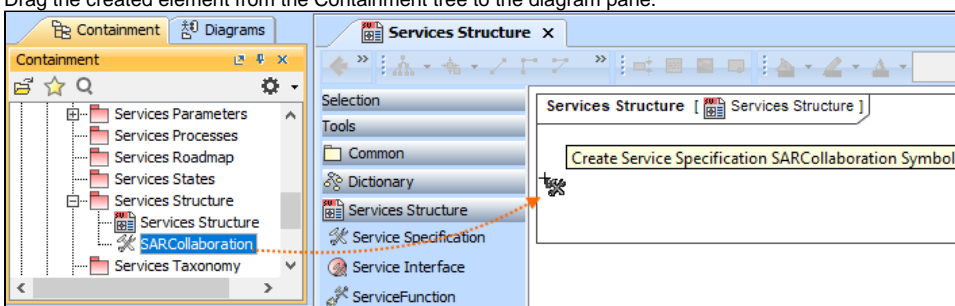
2. Name the element.

To create an Service Specification in a Containment tree

1. In the Containment tree, right click the Services Structure package and from the shortcut menu, select **Create Element**. Search for the Service Specification and select it.



2. Name the element.
3. Drag the created element from the Containment tree to the diagram pane.



The structure of each Service Specification can be modeled using the [Services Internal Connectivity diagram](#).

To create the elements from other resources (e.g. Word, Excel, HTML)

1. Copy a list in your resource.
2. In a diagram, press Ctrl+V and from the **Paste Special** dialog, choose **Element**.
3. From the **Select Type** dialog, choose Service Specification (or other appropriate element).

 more information about creating the elements from other resources, see [Creating elements from other resources](#).

Connecting the Service Specifications

When you have Service Specification created, you can start connecting them using the Composition and Aggregation relationships.

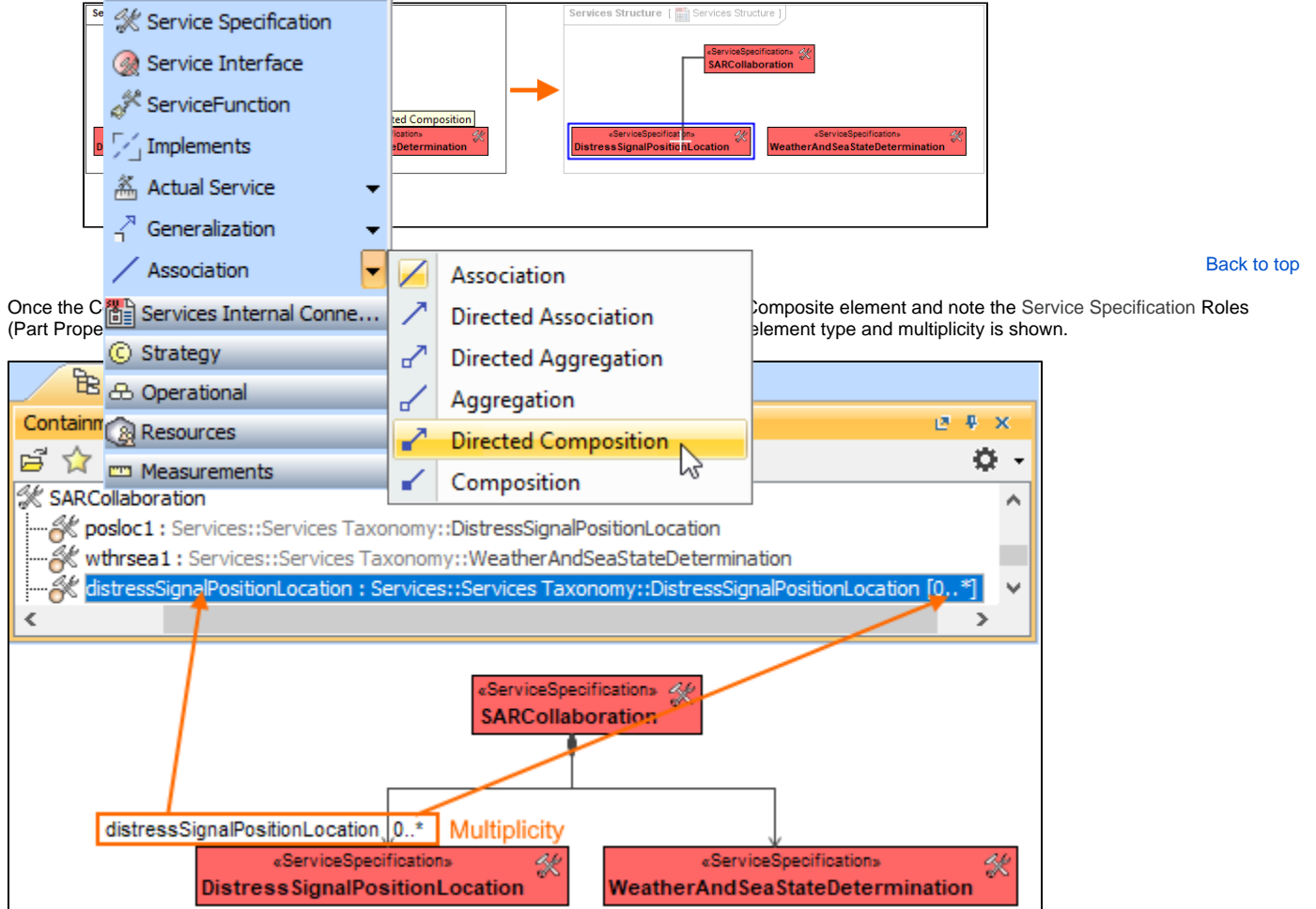
[Back to top](#)

To connect the elements with the Composition relationship

1. Select an element, which will be the Composition End.
2. From the Smart Manipulator, which appears after you select the element, choose Directed Composition.

 You can also select the Composition relationship from the diagram palette.

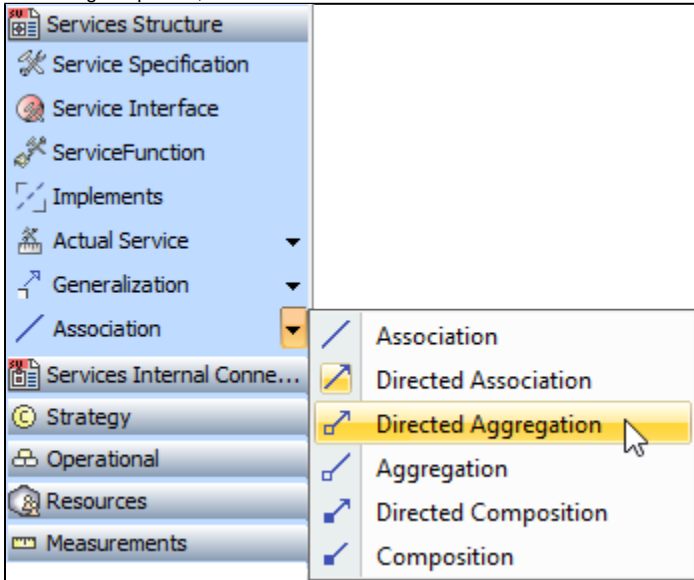
3. Move the mouse over the element and click to finish the action.



To connect the elements with the Aggregation relationship

1. Select an element, which will be the Composition End.

2. In the diagram palette, click the black arrow near the **Association** and choose **Directed Aggregation**.

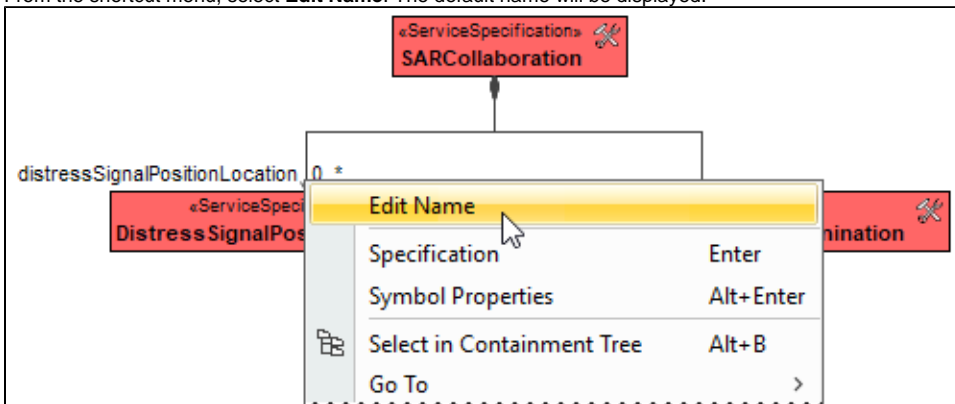


3. Click the element which is the Aggregation End and draw the relationship to the Reference End.

Changing the role name and specifying multiplicity

To change the role name

1. Right-click the selected Role end of the relationship.
2. From the shortcut menu, select **Edit Name**. The default name will be displayed.



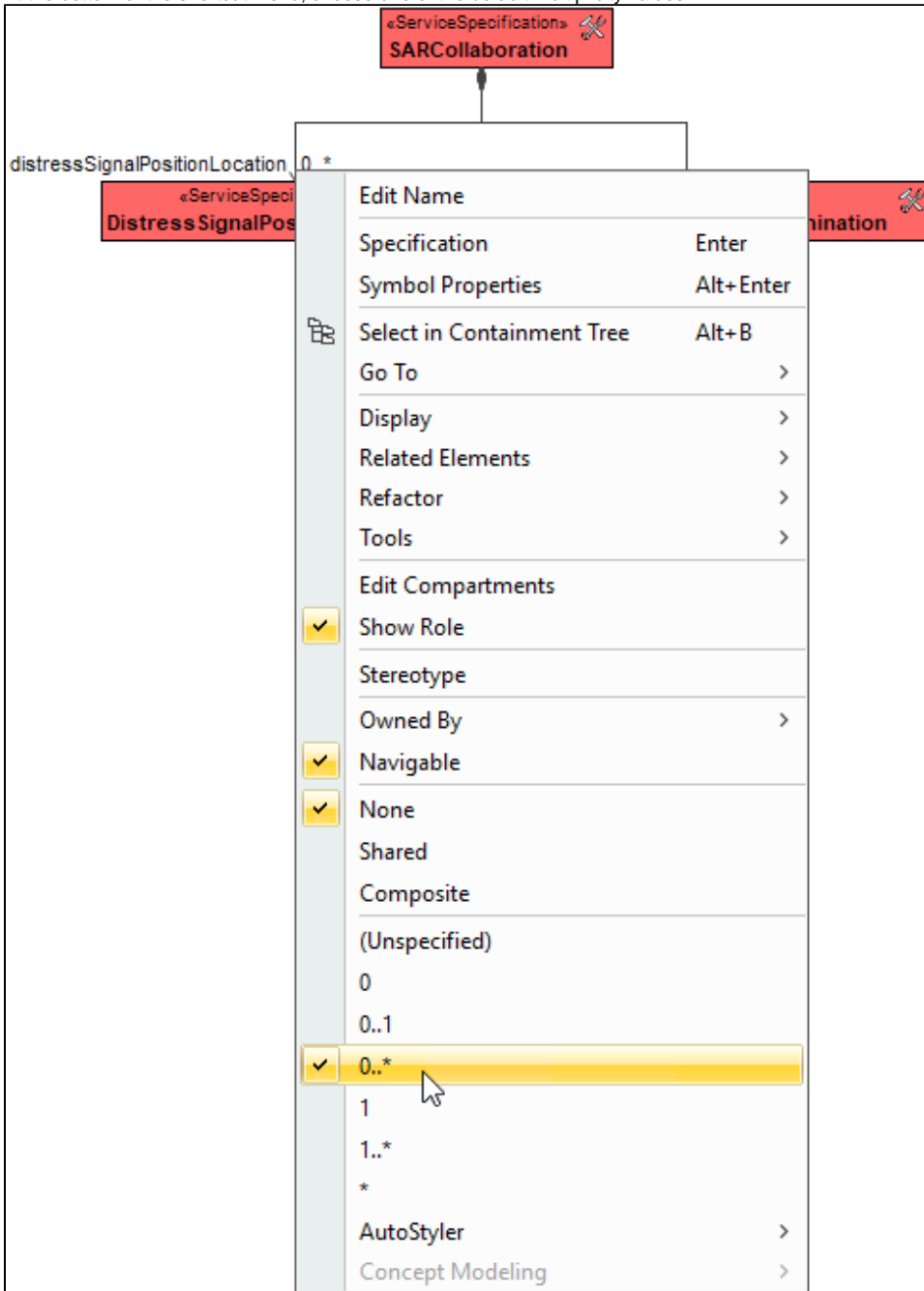
You can edit the default name on the diagram, in the Containment tree, or in the role's [Specification window](#).

[Back to top](#)

To specify multiplicity

1. Right-click the selected Role end of the Composite relationship.

2. At the bottom of the shortcut menu, choose one of the default multiplicity values.



You can always change the multiplicity value on the diagram or in the specification window of the role element.

[Back to top](#)

Displaying created structure

If you already have created a structure in the Containment tree, you can display it on the diagram. There are three ways to display the structure:

- Relationship (direct) Notation. If you choose using this notation, the structure will be displayed on a diagram pane with the elements connected with relationships.
- Attribute Compartment Notation. If you choose using this notations, the structure will be displayed as the attributes in the Attributes compartment.
- Structure (Nested elements) Notation. If you choose using this notations, the structure will be displayed in the Structure compartment.

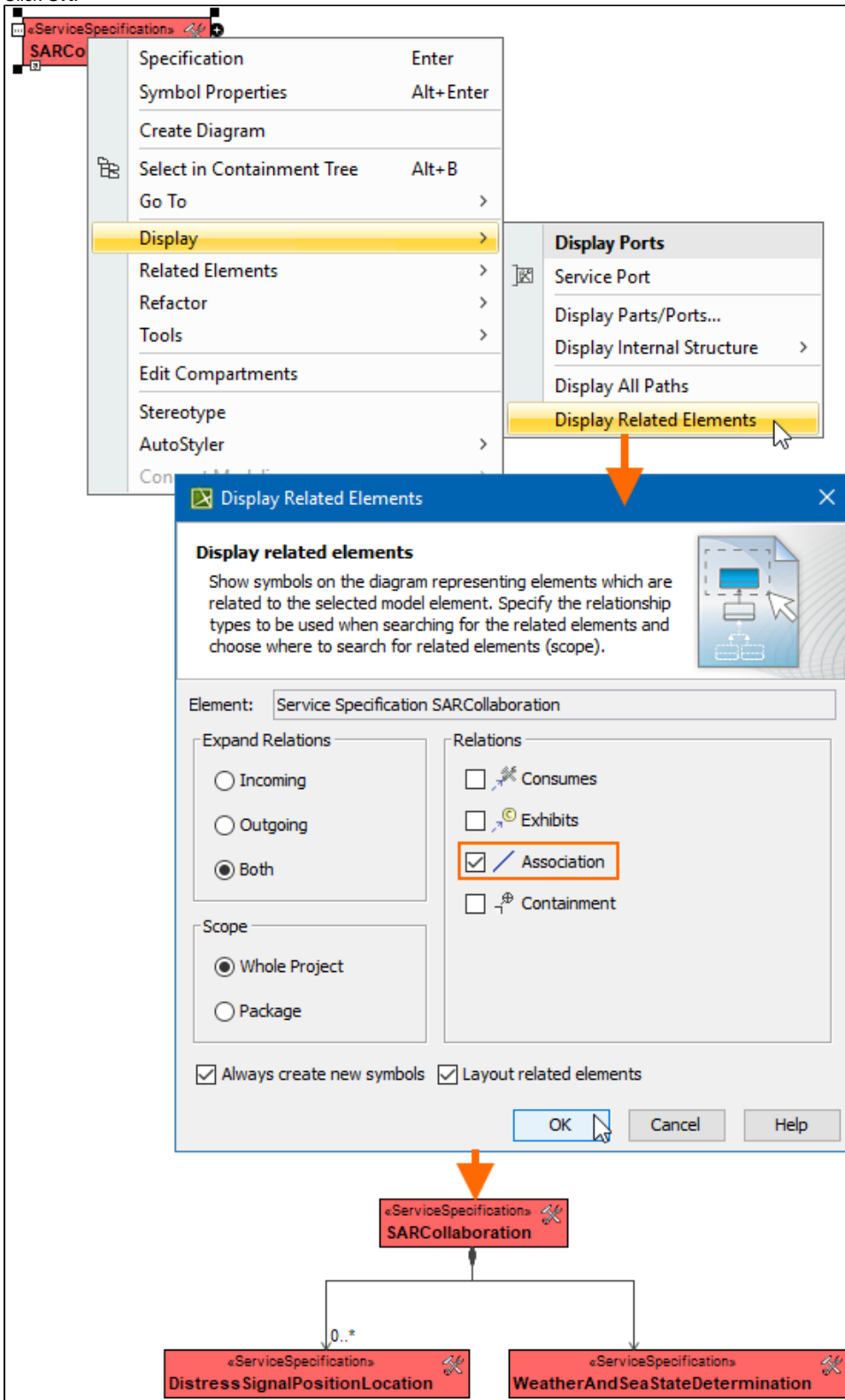
To display a created structure on a diagram (Direct Notation)

1. Drag the selected element with the part properties on to the diagram.

2. Right-click that element, and from its shortcut menu, select **Display > Display Related Elements**.
3. In the **Display Related Elements** dialog, select **Association**.

If Resource Artifacts (or other structural elements) were related using the Resource Association relationship, select the **Resource Association** also.

4. Click **OK**.



To display a created structure on a diagram (Attribute Compartment Notation)

1. Drag the selected element with the part properties on to the diagram.
2. Select the element and click the Compartments [smart manipulator](#).



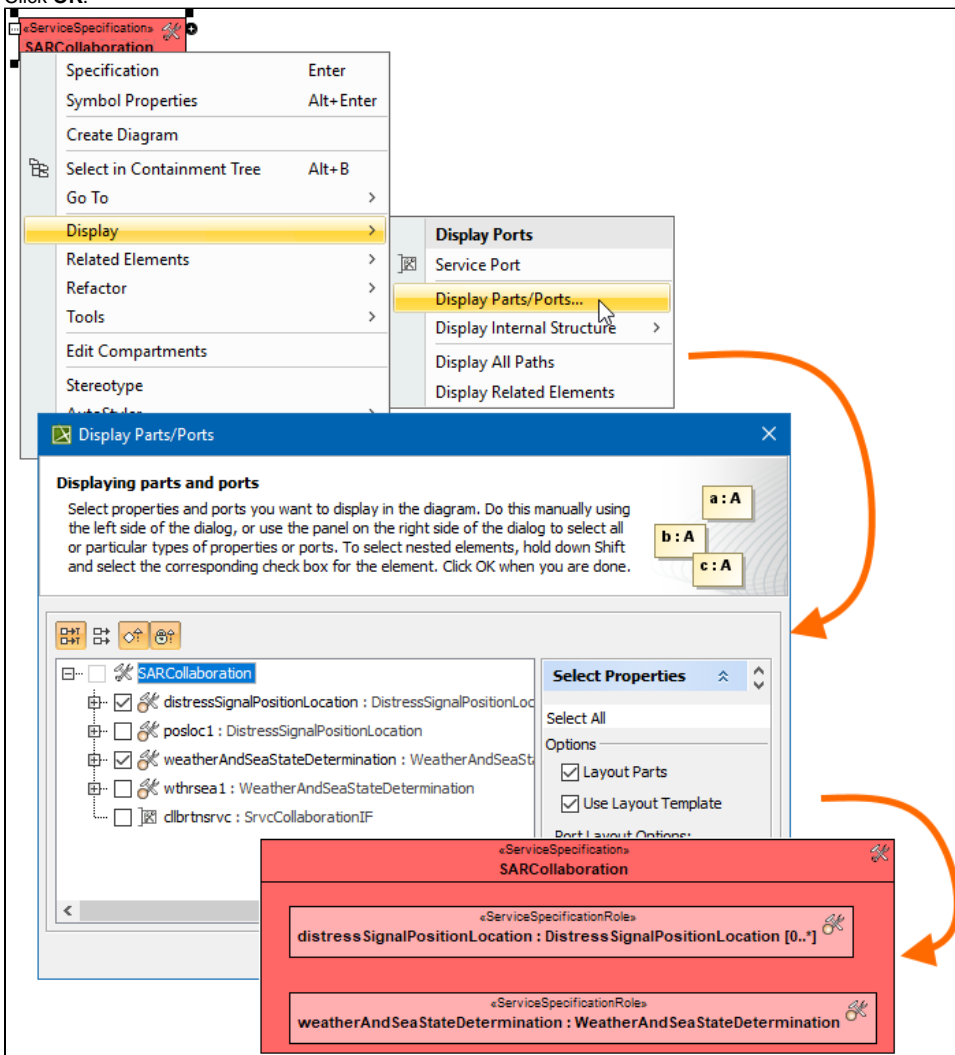
3. In the Compartments menu, select **Attributes**.

When connecting the elements with Composition/Aggregation relationships, the roles are Association Ends. In such case, the roles will not be displayed in the Attributes compartment, only in the Structure compartment.

[Back to top](#)

To display a created structure on a diagram (Structure (Nested elements) Notation)

1. Drag the selected element with the part properties on to the diagram.
2. Do one of the following:
 - Select the element, click the Compartments [smart manipulator](#), and choose **Structure**.
 - Right-click that element, and from its shortcut menu, select **Display > Display Parts/Ports**.
3. In the **Display Parts/Ports** dialog, select the parts you want to be displayed.
4. Click **OK**.



[Back to top](#)

Related pages

- [Displaying related elements](#)
- [Displaying parts and ports](#)
- [Compartments](#)
- [Smart manipulation](#)