

# Working with Resources Structure diagram

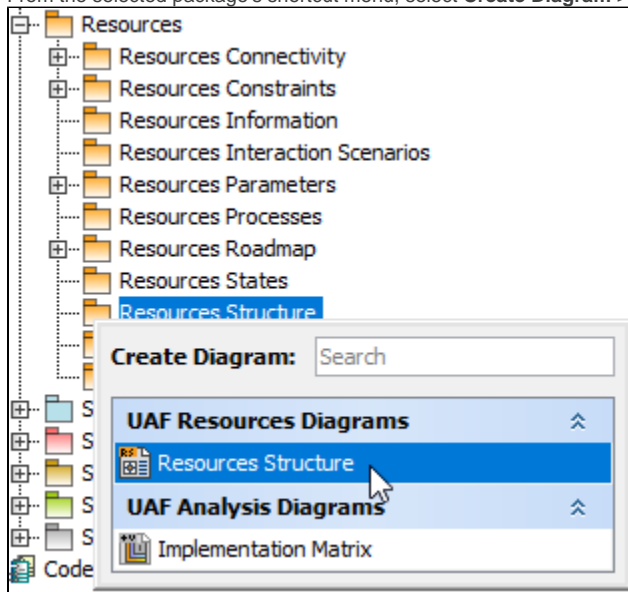
On this page

- [Creating a diagram](#)
- [Creating an element](#)
- [Connecting the Resource Artifact](#)
- [Changing the role name and specifying multiplicity](#)
- [Displaying created structure](#)

## Creating a diagram

To create an Resource Structure diagram

1. In the Containment Tree, select the Resource Structure and do one of the following:
  - From the selected package's shortcut menu, select **Create Diagram > Resource Structure**.



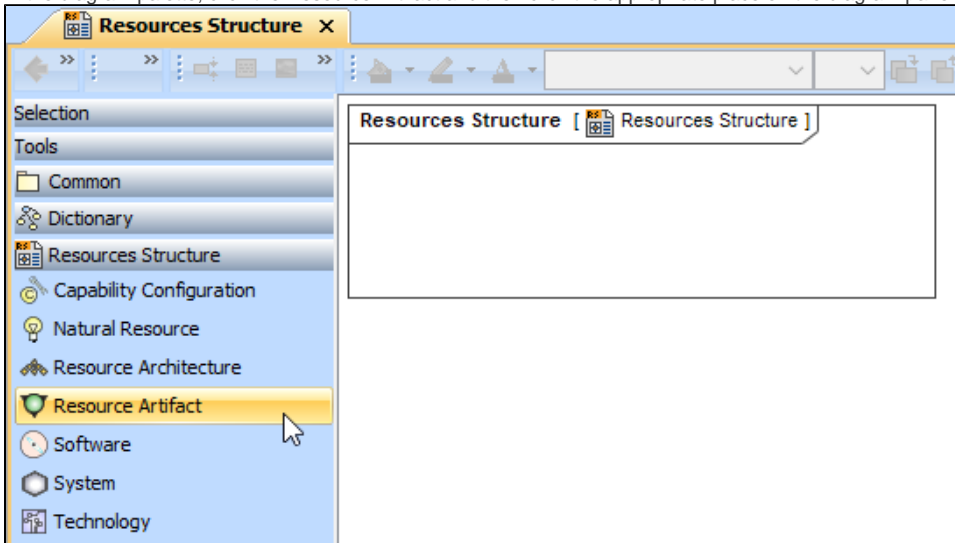
- In the modeling tool's main menu, click **Create Diagram**, search for **Resource Structure** and select it.
2. Name a diagram or leave it with the default name.

## Creating an element

When the diagram is created, you can start creating the appropriate elements. An example is described using Resource Artifact element, but the same is valid for other structural elements.

To create an Resource Artifact in a diagram

1. In the diagram palette, click the Resource Artifact and then click the appropriate place on the diagram pane.

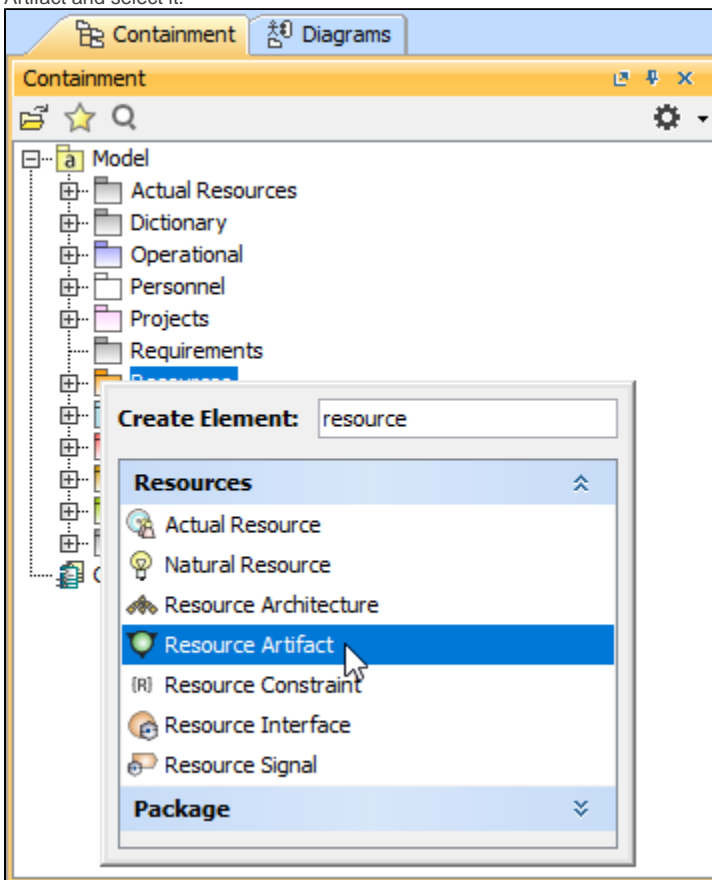


2. Name the element.

[Back to top](#)

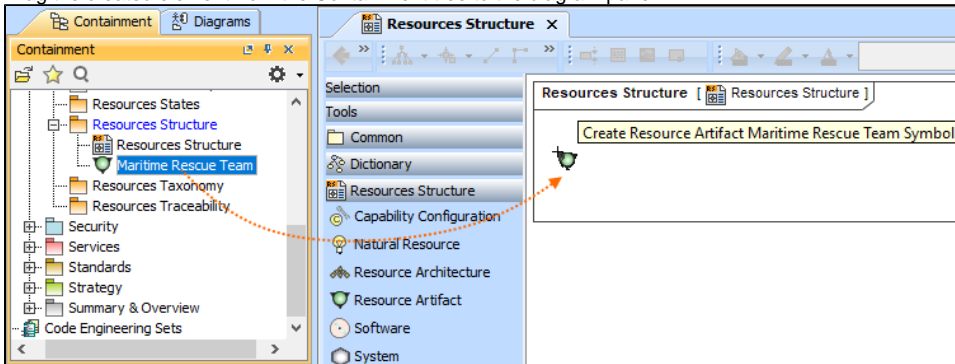
To create an Resource Artifact in a Containment tree

1. In the Containment tree, right click the Resource Structure package and from the shortcut menu, select **Create Element**. Search for the Resource Artifact and select it.



2. Name the element.

3. Drag the created element from the Containment tree to the diagram pane.



The structure of each Resource Artifact can be modeled using the [Resources Internal Connectivity diagram](#).

To create the elements from other resources (e.g. Word, Excel, HTML)

1. Copy a list in your resource.
2. In a diagram, press Ctrl+V and from the **Paste Special** dialog, choose **Element**.
3. From the **Select Type** dialog, choose Resource Artifact (or other appropriate element).

For more information about creating the elements from other resources, see [Creating elements from other resources](#).

## Connecting the Resource Artifact

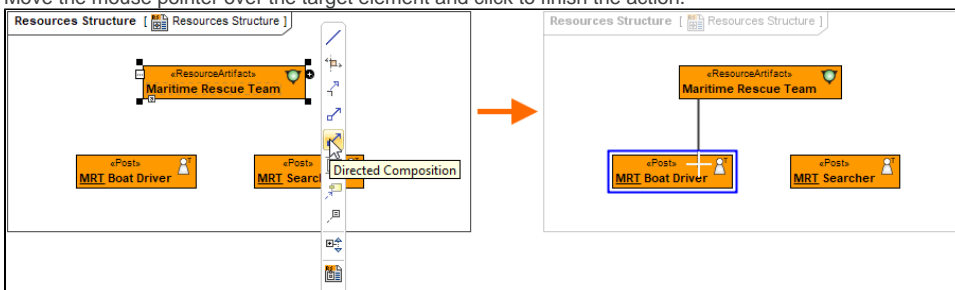
When you have Resource Artifact created, you can start connecting them using the Composition and Aggregation relationships.

[Back to top](#)

To connect the elements with the Composition relationship

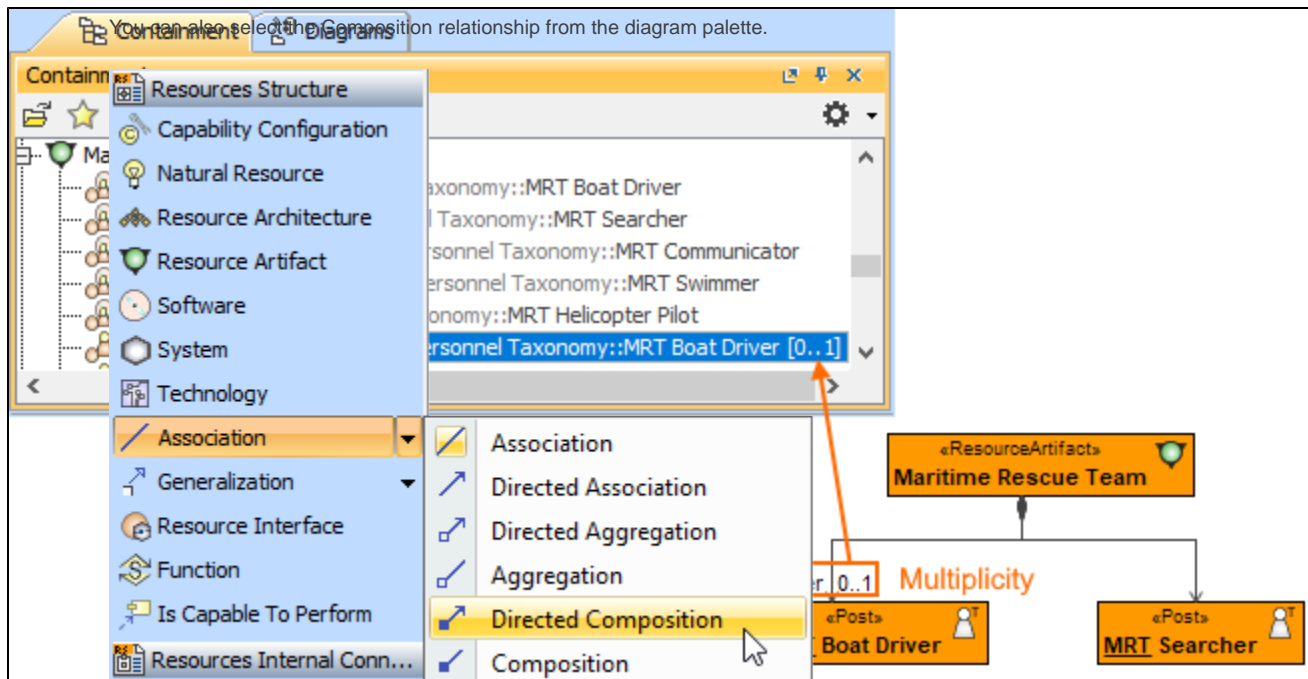
1. Select an element, which will be the Composition End.
2. From the Smart Manipulator, which appears after you select the element, choose Directed Composition.

3. Move the mouse pointer over the target element and click to finish the action.



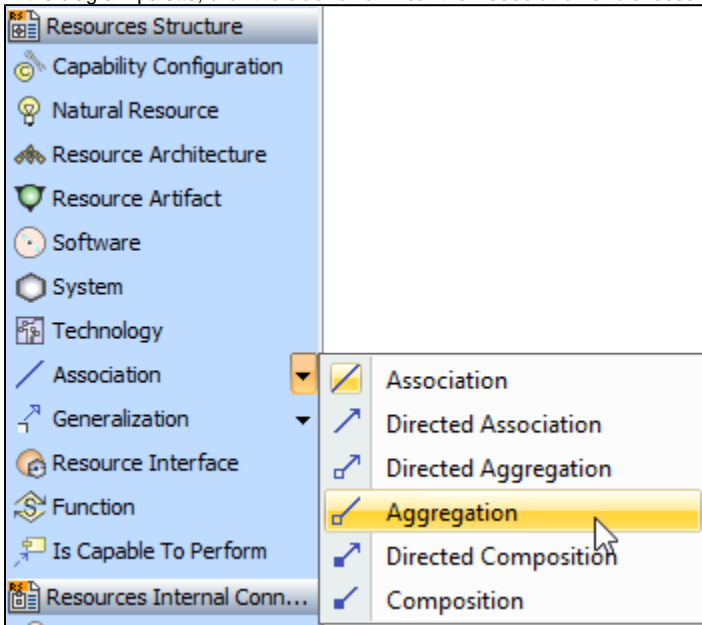
[Back to top](#)

Once the Composition relationship is created, in the Containment tree, you can see the Composite element and note the Resource Roles (Part Properties) displayed within the namespace of the Composite element and how the element type and multiplicity is shown.



To connect the elements with the Aggregation relationship

1. Select an element, which will be the Composition End.
2. In the diagram palette, click the black arrow near the **Association** and choose **Aggregation**.



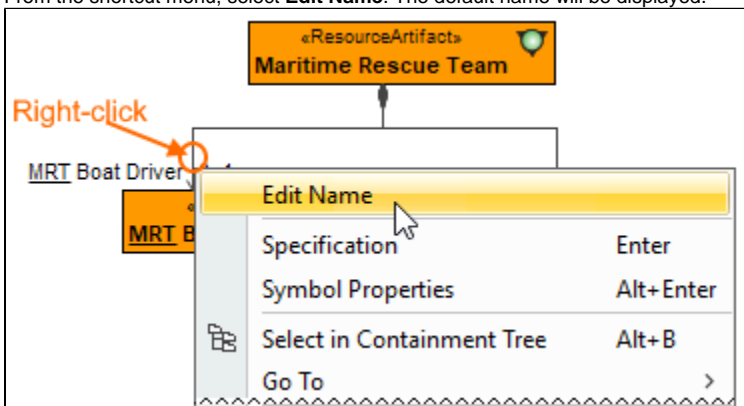
3. Click the element which is the Aggregation End and draw the relationship to the Reference End.

## Changing the role name and specifying multiplicity

To change the role name

1. Right-click the selected Role end of the relationship.

2. From the shortcut menu, select **Edit Name**. The default name will be displayed.



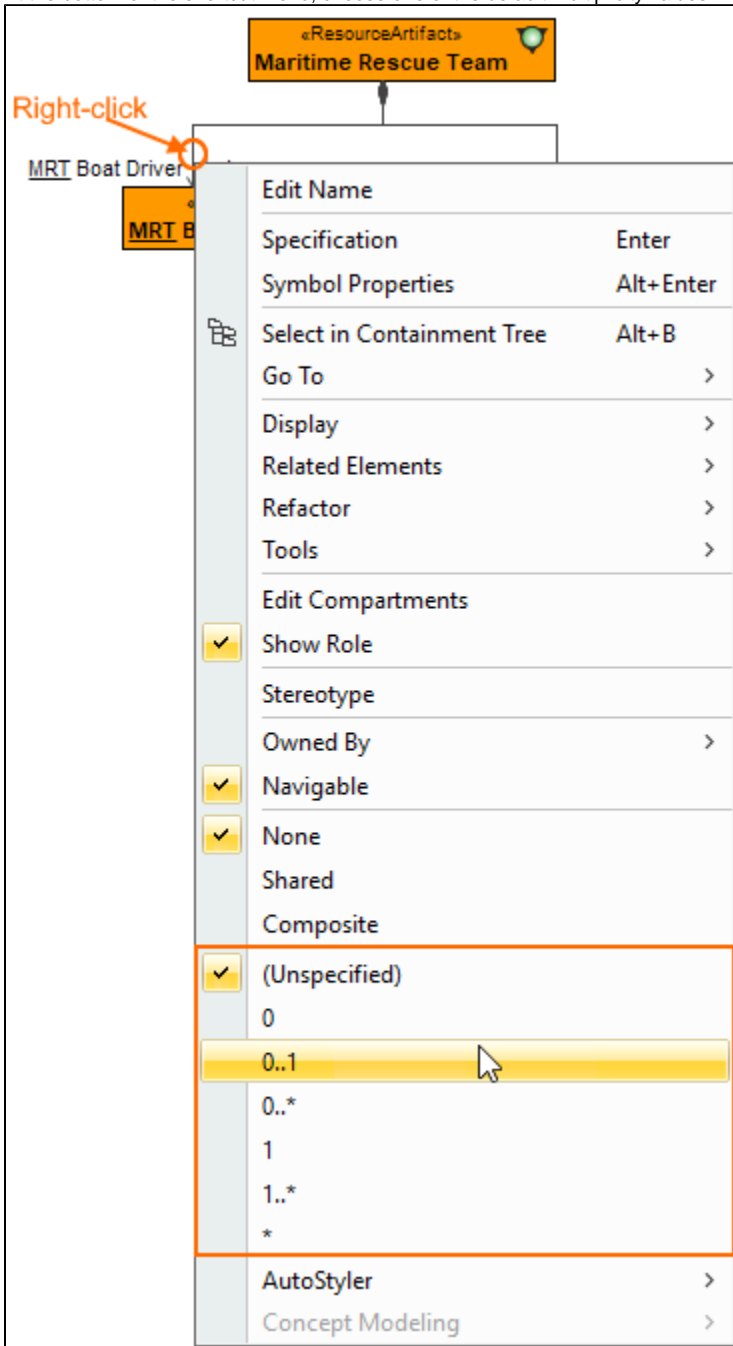
You can edit the default name on the diagram, in the Containment tree, or in the role's [Specification window](#).

[Back to top](#)

To specify multiplicity

1. Right-click the selected Role end of the Composite relationship.

2. At the bottom of the shortcut menu, choose one of the default multiplicity values.



You can always change the multiplicity value on the diagram or in the specification window of the role element.

[Back to top](#)

## Displaying created structure

If you already have created a structure in the Containment tree, you can display it on the diagram. There are three ways to display the structure:

- Relationship (direct) Notation. If you choose using this notation, the structure will be displayed on a diagram pane with the elements connected with relationships.
- Attribute Compartment Notation. If you choose using this notations, the structure will be displayed as the attributes in the Attributes compartment.
- Structure (Nested elements) Notation. If you choose using this notations, the structure will be displayed in the Structure compartment.

To display a created structure on a diagram (Direct Notation)

1. Drag the selected element with the part properties on to the diagram.

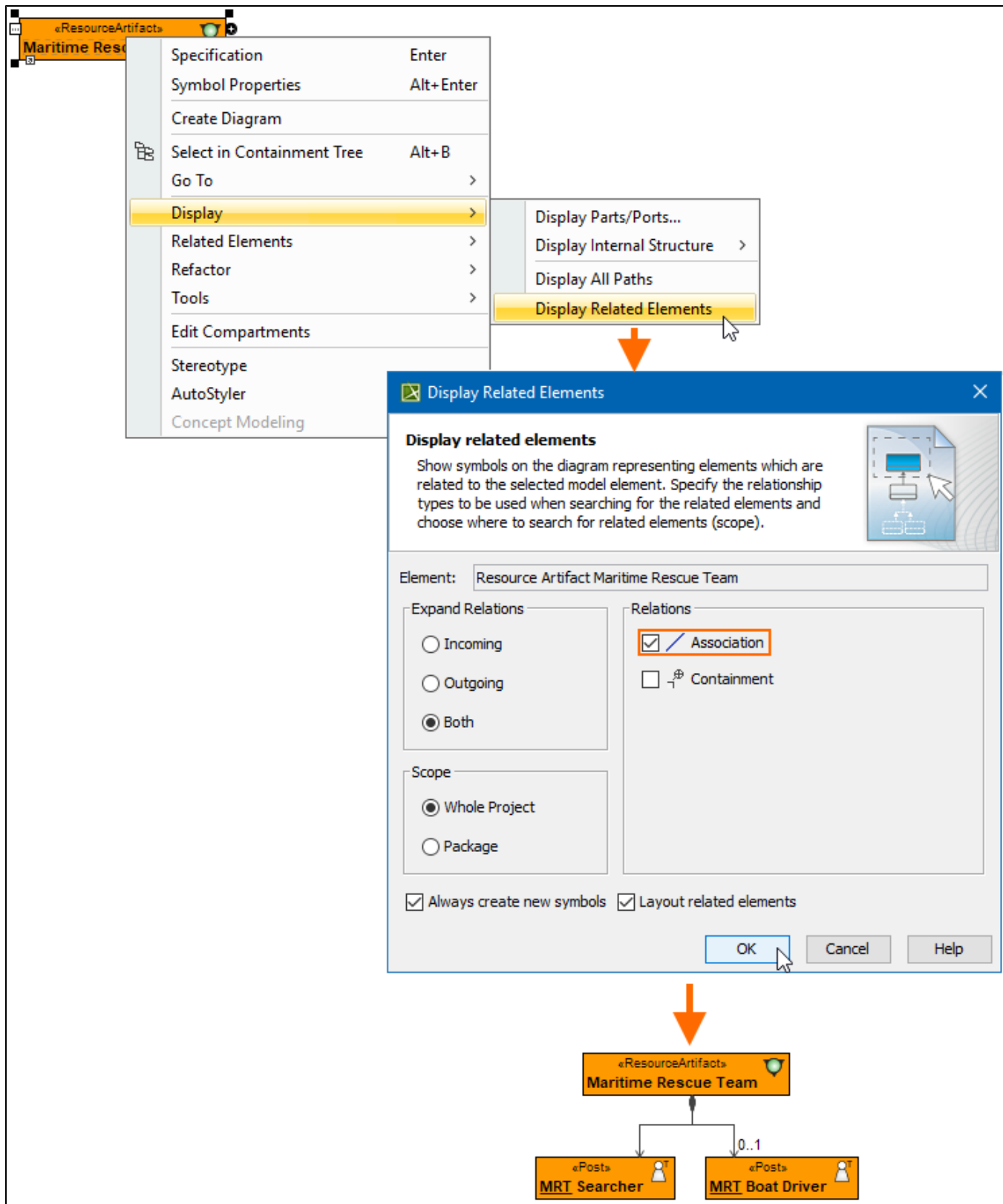
2. Right-click that element, and from its shortcut menu, select **Display > Display Related Elements**.
3. In the **Display Related Elements** dialog, select **Association**.



If Resource Artifacts (or other structural elements) were related using the Resource Association relationship, select the **Resource Association** also.

4. Click **OK**.

[Back to top](#)



To display a created structure on a diagram (Attribute Compartment Notation)

1. Drag the selected element with the part properties on to the diagram.

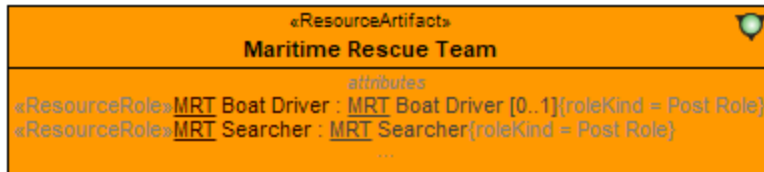


2. Select the element and click the Compartments [smart manipulator](#).



3. In the Compartments menu, select **Attributes**.

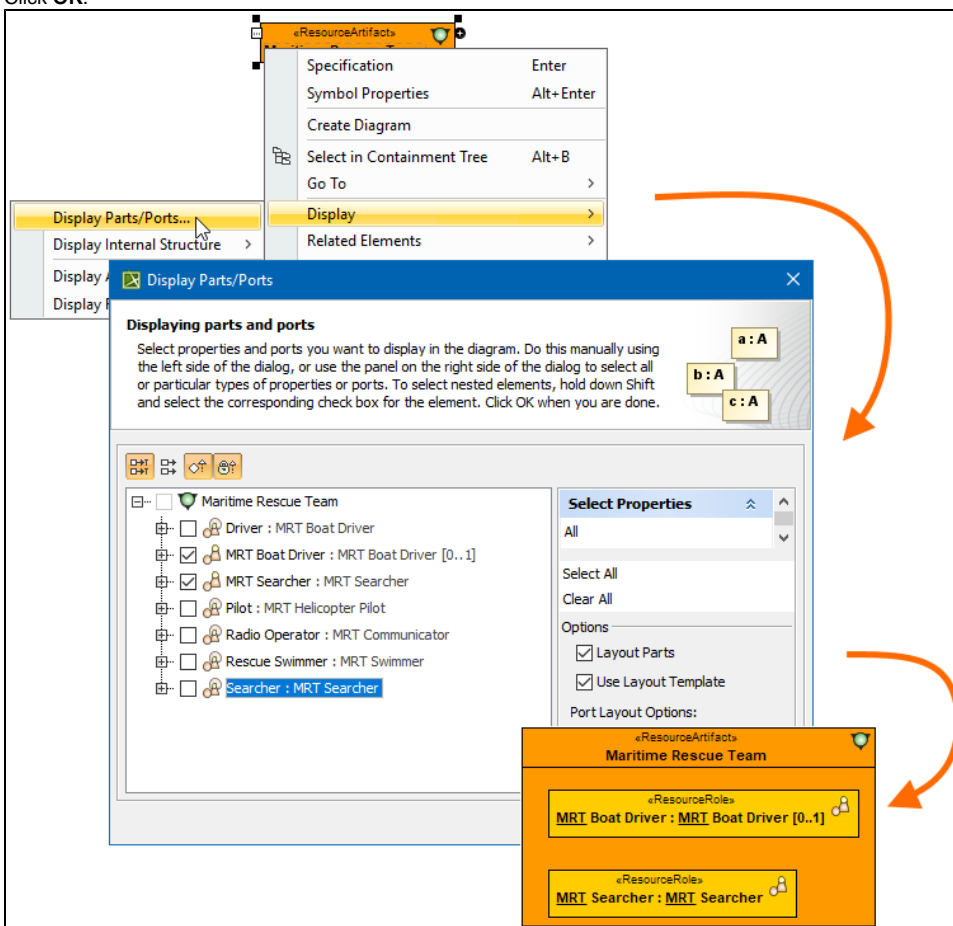
When connecting the elements with Composition/Aggregation relationships, the roles are Association Ends. In such case, the roles will not be displayed in the Attributes compartment, only in the Structure compartment.



[Back to top](#)

To display a created structure on a diagram (Structure (Nested elements) Notation)

1. Drag the selected element with the part properties on to the diagram.
2. Do one of the following:
  - Select the element, click the Compartments [smart manipulator](#), and choose **Structure**.
  - Right-click that element, and from its shortcut menu, select **Display > Display Parts/Ports**.
3. In the **Display Parts/Ports** dialog, select the parts you want to be displayed.
4. Click **OK**.



[Back to top](#)

#### Related pages

- [Displaying related elements](#)
- [Displaying parts and ports](#)
- [Compartments](#)
- [Smart manipulation](#)