

# S3 Service Interfaces

## Description

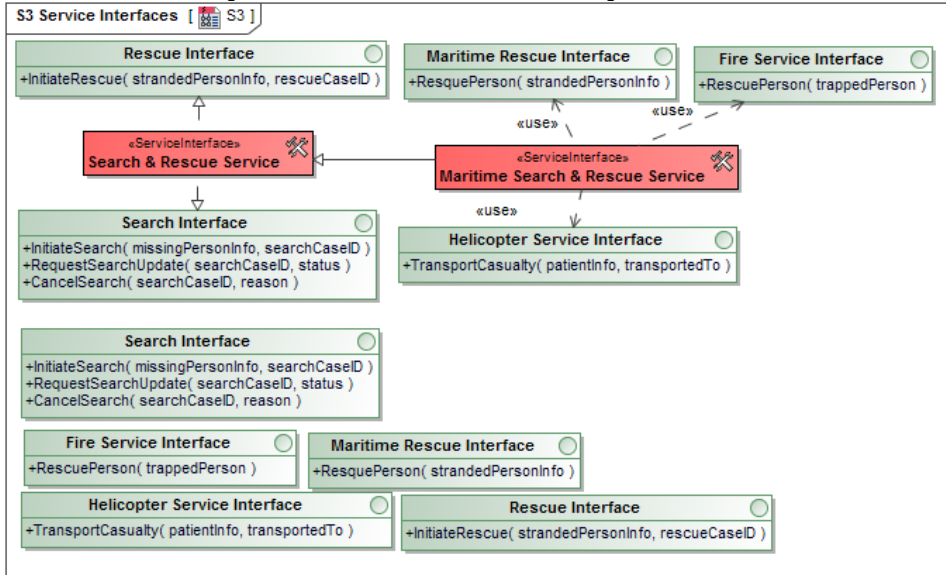
The purpose of the S3 Service Interfaces view is to define the interfaces presented by a service. A service presents one or more interfaces to consumers (a “consumer” being any agent capable of using the service – a person, an organization, a system or another service). In this case, the architect specifies provided interfaces. A service may also be capable of using interfaces exposed by other services, and the architect may specify these as used interfaces.

Specifying the interfaces that a service provides and uses defines which services are compatible with which other services. If Service A provides an interface, X and Service B can use Interface X then Service B can call upon at least some of the functionality of Service A.

## Implementation

The S3 view can be represented using:

- S3 Service Interfaces diagram which is based on the UML Class diagram.



- S3 MS Word document report.

## Related elements

- [Service Interface](#)
- [Service Method](#)
- [Flow Property](#)
- [Service Parameter](#)
- [Operational Port](#)
- [Resource Port](#)