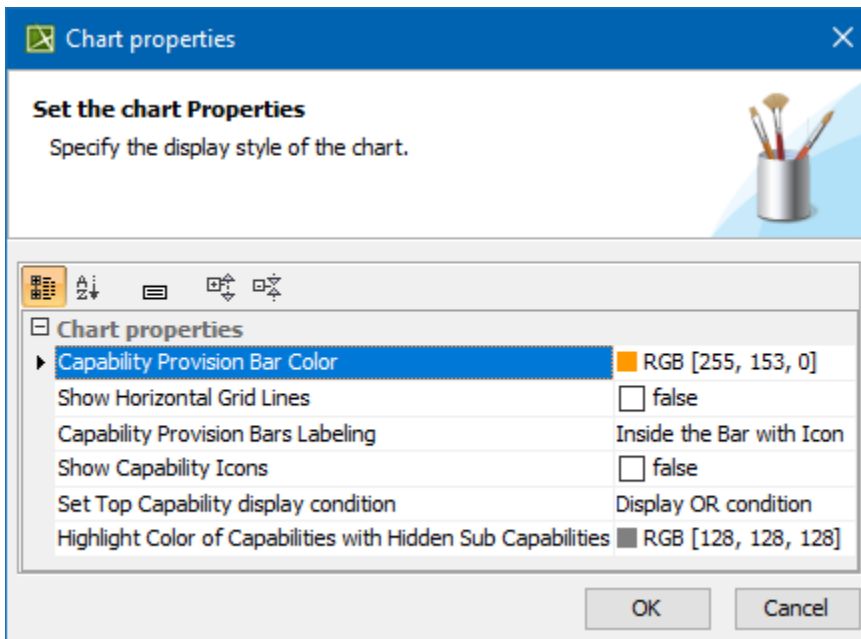


# Customizing Gantt chart properties


## On this page

- [Marking the time period](#)
- [Top Capability display conditions](#)
- [Highlighting Capabilities with hidden Sub Capabilities](#)
- [Displaying Slots as grouping elements](#)
- [Displaying Actual Persons in different lines](#)
- [Other options](#)

When you create the Gantt Charts, you can easily customize its properties. You can change Capability Provision bar color, choose whether to show or hide the horizontal grid lines, set the top capability display conditions, and so on.



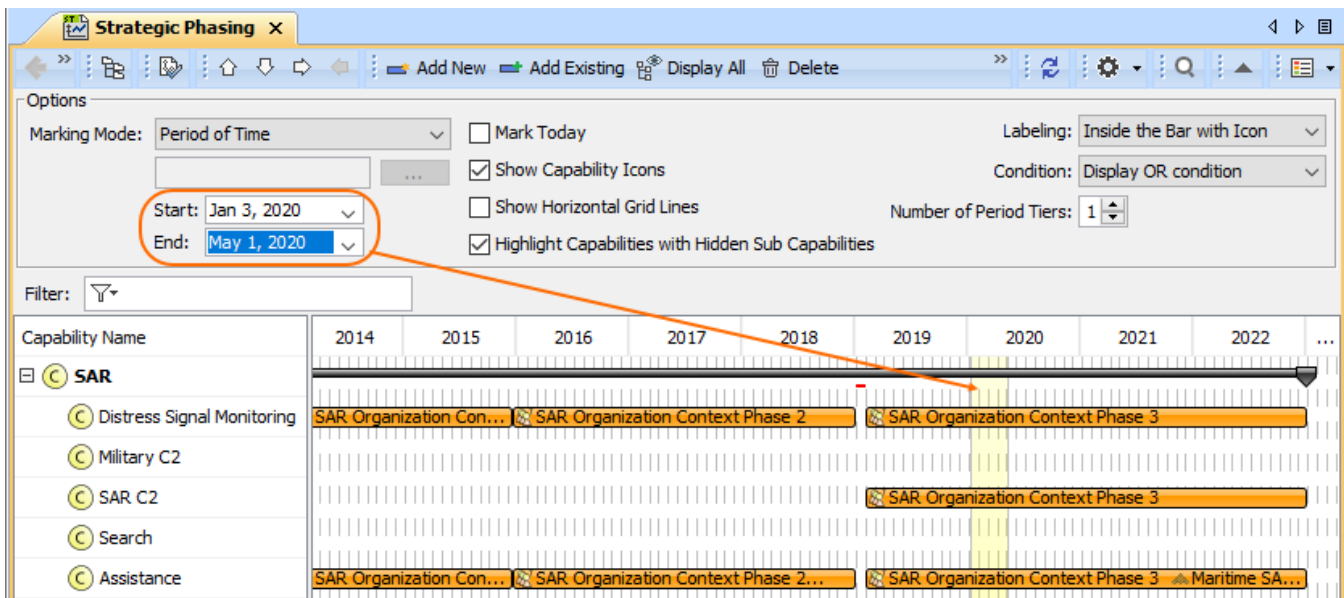
To open the Chart properties dialog, do one of the following

- Right-click the Gantt chart pane. From the shortcut menu, select **Chart Properties**.
- In the chart toolbar, click  and then **Chart Properties**.

## Marking the time period

In the Gantt chart **Options** area, you can choose to mark the needed period of time. One of the following Marking Modes are available:

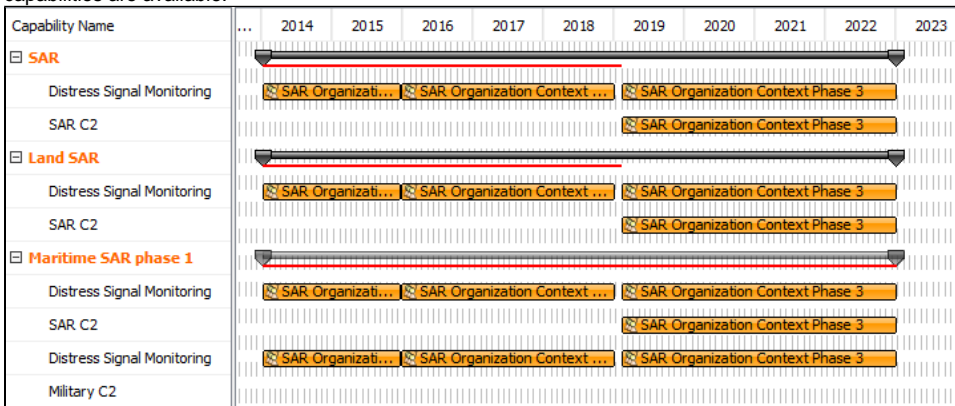
- **None**. Nothing will be marked.
- **Period of Time**. Choose to mark a period of time. For this mode, you can select the Start and End dates to be marked.
- **Period of Actual Enterprise Phase**. Choose to mark a period of the Actual Enterprise Phase. The time frame will be marked according to the Start and End dates set for the selected Actual Enterprise Phase.



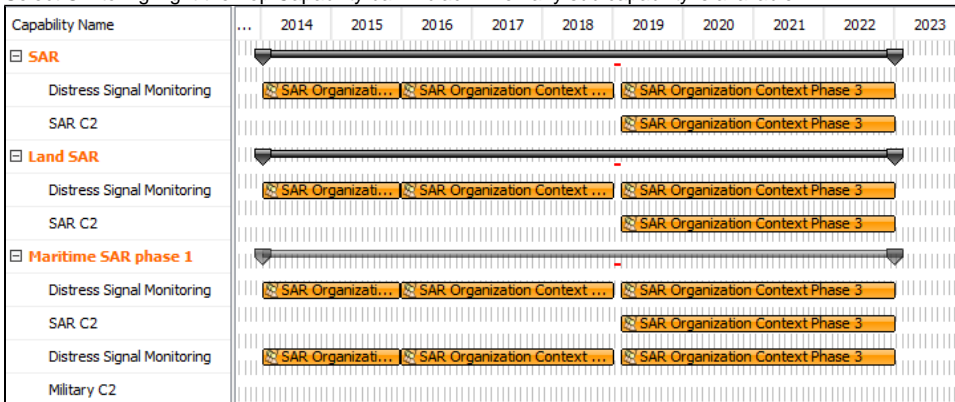
## Top Capability display conditions

In the **Chart Properties** dialog, you can choose a condition to highlight the availability of capabilities. There are two available options:

- Select **AND** condition to highlight the Top Capability bar in red when any capability is unavailable in that period of time, and in black when all sub capabilities are available.



- Select **OR** to highlight the Top Capability bar in black when any sub capability is available.

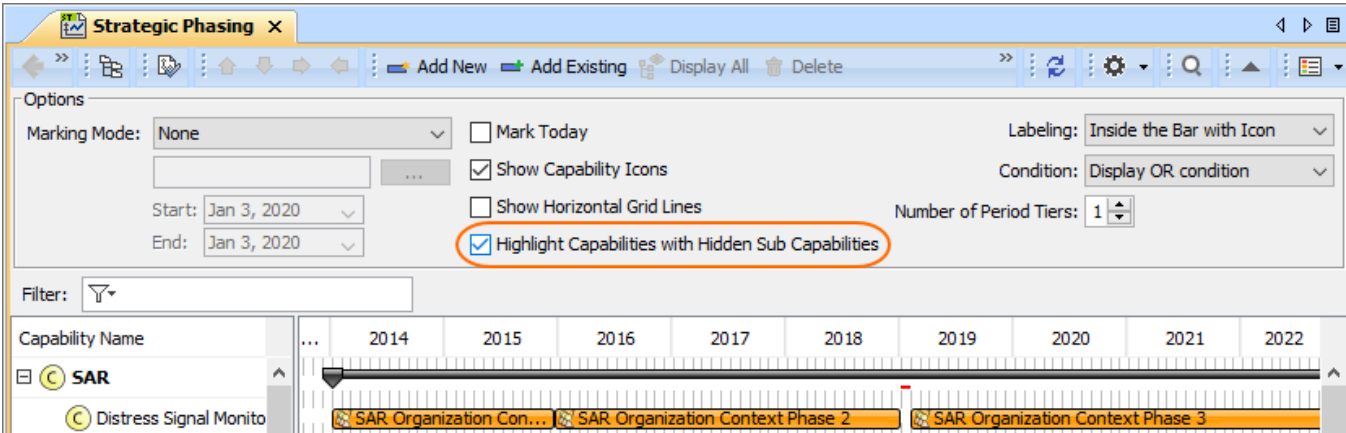


## Highlighting Capabilities with hidden Sub Capabilities

When a Capability, displayed in the Gantt chart has Sub Capabilities, those Sub Capabilities can be removed from the chart. In such case, when Sub Capabilities are removed, the main Capability can be highlighted.

To start highlighting Capabilities with removed Sub Capabilities

- In the chart Options area, click to select a checkbox near **Highlight Capabilities with Hidden Sub Capabilities**.



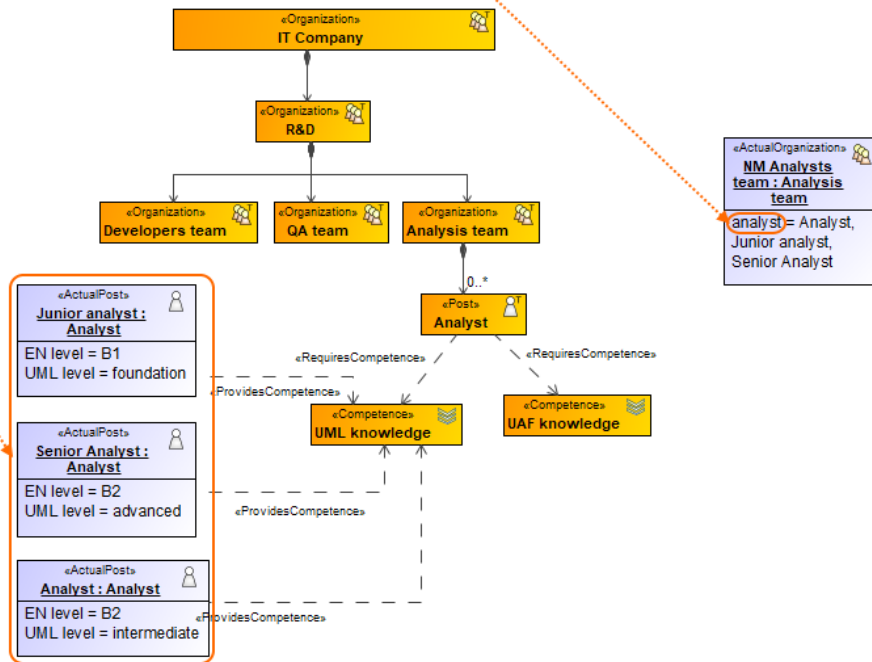
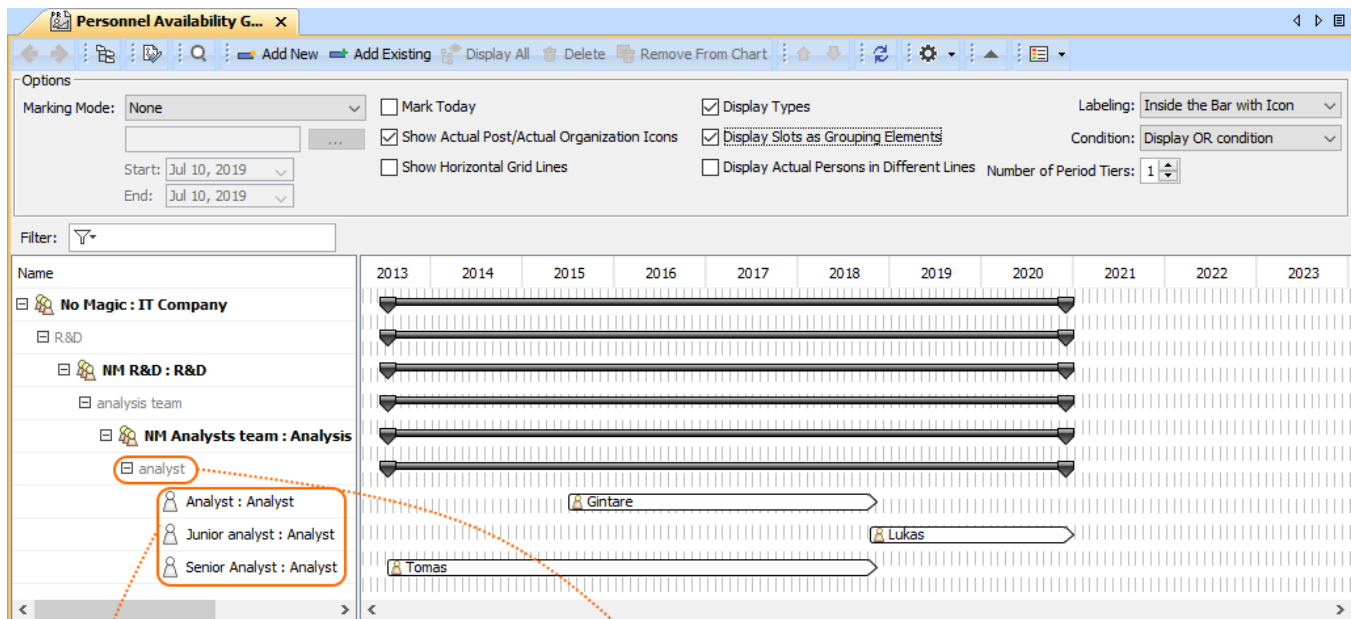
The default color of the highlighted Capabilities is gray, but you can change it.

To change a highlight color

1. Open the **Chart Properties** dialog.
2. In the **Highlight Color of Capabilities With Hidden Sub Capabilities** property cell and click ... to select a new color.

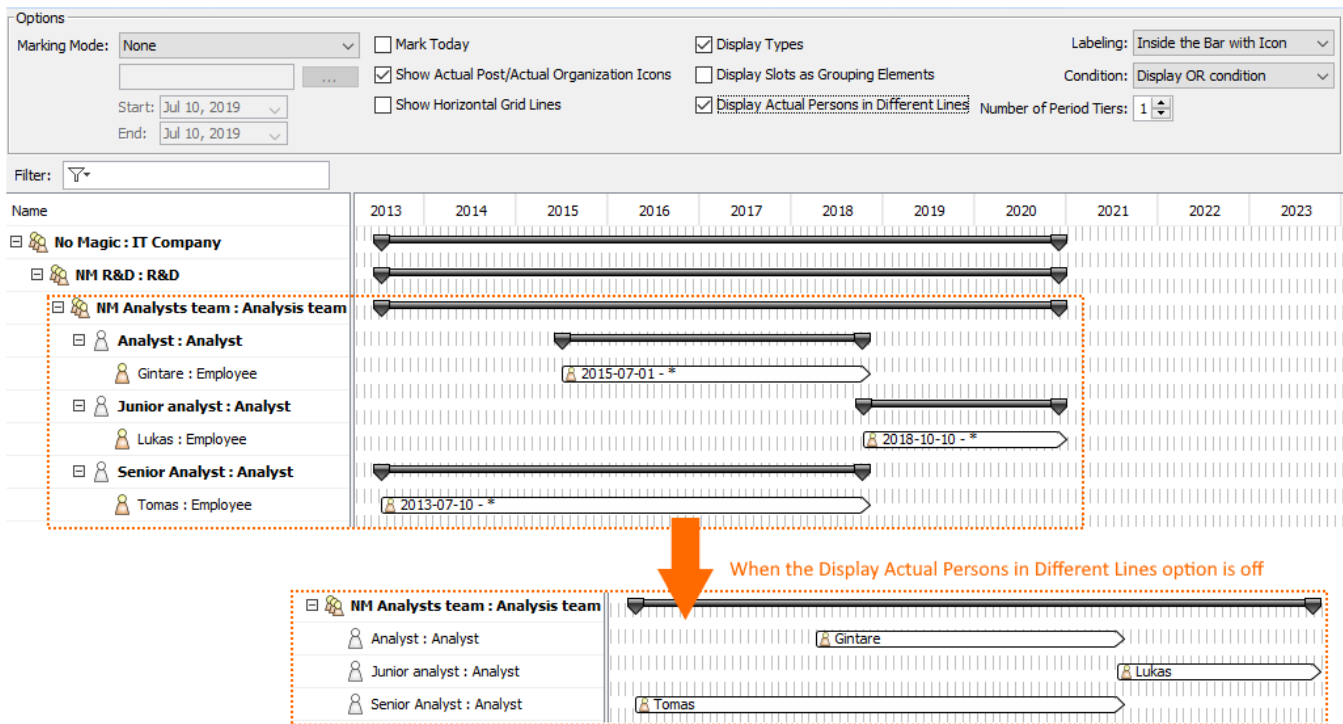
## Displaying Slots as grouping elements

In [Personnel Availability](#), [Actual Enterprise Phase](#) Gantt Charts, and [Projects Roadmap](#) diagram, you can choose to display Slots as grouping elements. Depending on the Gantt Chart you are working with, the Actual Organizations, Actual Enterprise Phases, or Actual Projects are displayed with the slot as a grouping element.



## Displaying Actual Persons in different lines

In the [Personnel Availability Gantt Chart](#), you can choose to display Actual Persons in the different lines.



## Other options

- **Show <...> Icons.** Select this option to display the icons near the elements.
- **Show Horizontal Grid Lines.** Select this option to display the horizontal lines in the chart.
- **Display Types.** Select to display types with element names.

## Related diagrams

- [CV-3 Capability Phasing](#)
- [MODAF. StV-3 Capability Phasing](#)
- [NCV-3 Capability Phasing](#)
- [Pr Configuration Management](#)
- [Strategic Phasing diagram](#)
- [Actual Strategic Phases Gantt Chart](#)
- [Personnel Availability Gantt Chart](#)
- [Projects Roadmap diagram](#)