

Exporting DDS XML

You can generate DDS xml file directly from the modeling tool. Referenced QoS profiles are included in the resulting XML. Before the export a pre-check is initiated to ensure that the QoS Profiles imported to modeling tool were not changed and still up to date. You can use the resulting XML in the **RTI DDS Code Generator**, **RTI System Designer**, the **DDS Simulink Tooling** or other standards-compliant tool.

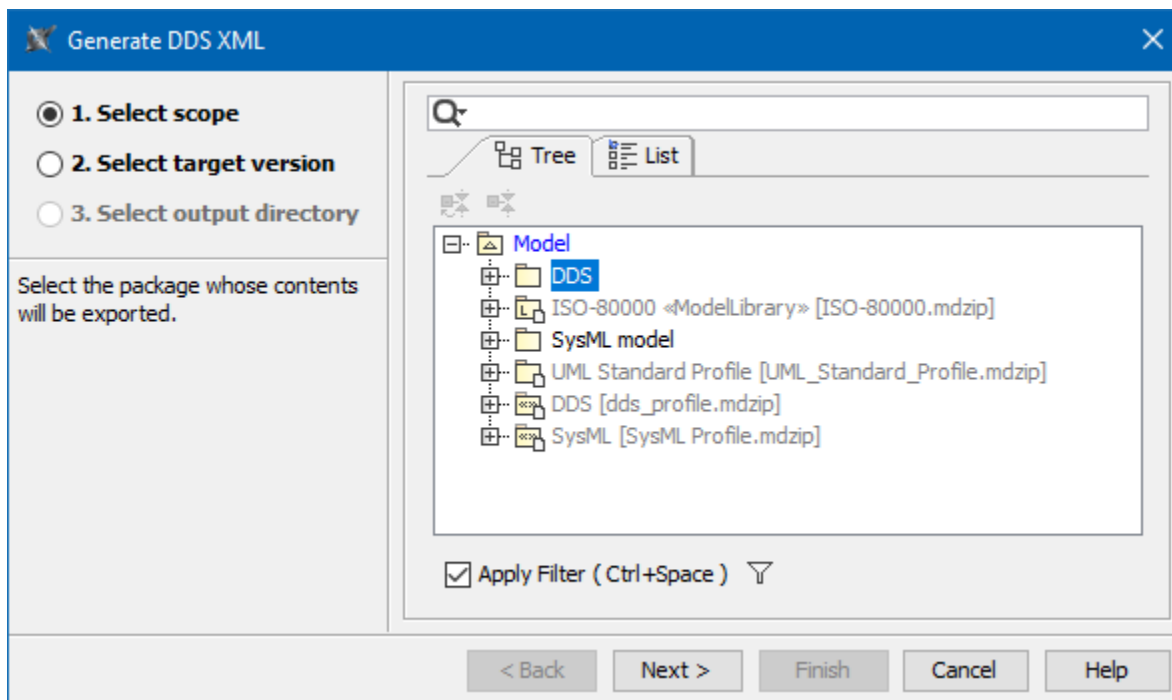
To generate DDS XML

1. From the [main menu](#), select **Tools > DDS > Generate DDS XML**.
2. In the **Generate DDS XML** dialog, select the following:

- **Select Scope** - select a Package which content you want to export. Click **Next**.



To ensure that the exported XML is valid, make sure the selected package contains at least one domain participant library containing at least one Domain Participant. Otherwise, the tool takes care of the validity of references by including the elements referred from the selected package even if they are outside the selected Package.



- **Select target version** - select DDS target version. Click **Next**.



QoS Profiles between versions are not compatible. QoS Profiles with a version that is not matching with the target version selected in the wizard will prevent the export.

Generate DDS XML

☐ 1. Select scope
 ☒ 2. Select target version
 ☐ 3. Select output directory

Select dds target version

☒ DDS Connex 5.3.1
 ☐ DDS Connex 6.0.0
 ☐ DDS Connex 6.0.1

< Back
 > Next
 > Finish
 > Cancel
 > Help

- **Select output directory** - select the location of exported DDS XML file. Click **Finish**.

Generate DDS XML

☐ 1. Select scope
 ☐ 2. Select target version
 ☒ 3. Select output directory

Select the destination directory which will contain the resulting DDS XML.

File name:

Look in:

Recent Items
 Desktop
 Documents
 LT4-JAA4-CEM
 Network

Custom Office Templates

My Received Files

WindowsPowerShell

Folder name:
 Files of type:

< Back
 > Next
 > Finish
 > Cancel
 > Help

The DDS XML file is generated.