

# Cloning projects

You can clone the latest version of your server project as a separate project or the latest version of a project branch as a separate branch. The cloned project can be used as a "template" to create a new project or as an independent base for new development. IDs of a cloned project and elements are reset automatically. Project permissions are reset as well; the project is available only for the user who has cloned the project. All references to used projects (if there are any) are maintained.



- You can only clone either the latest version of a project or the latest version of a project branch.

To clone a project or a branch

- You need at least double the amount of memory to clone a project in comparison to opening a project.

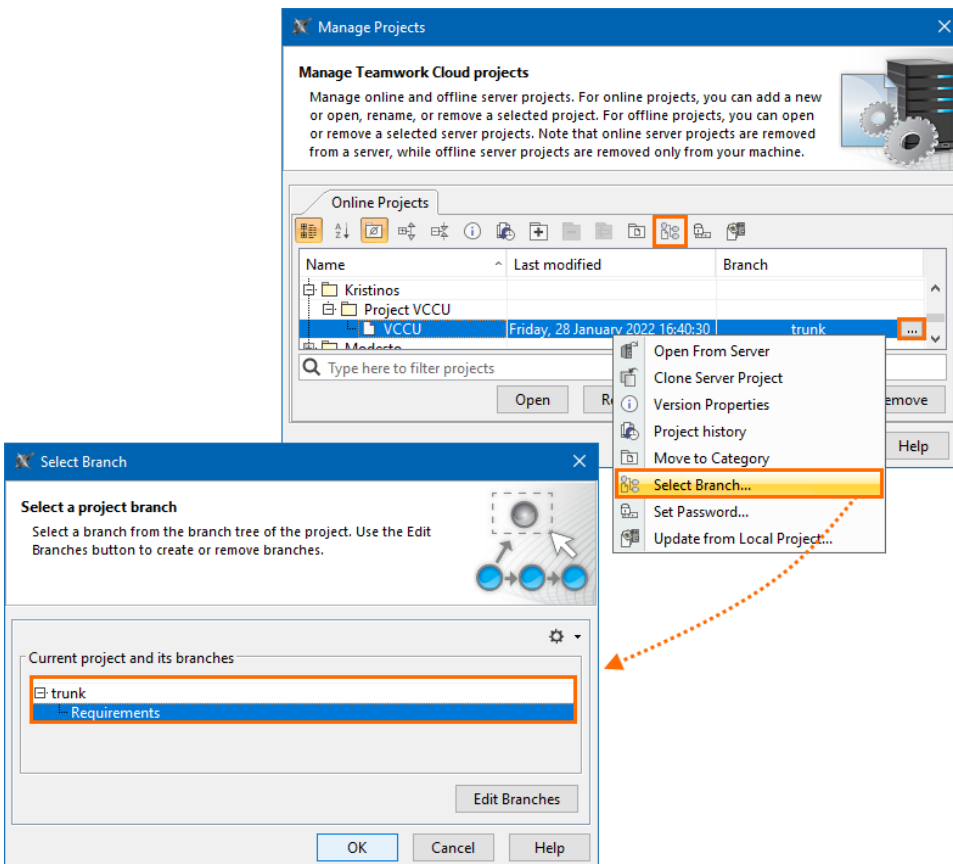
- On the main menu, click **Collaborate > Projects**. The **Manage Projects** dialog opens.
- To clone a project, select the project you want to clone.



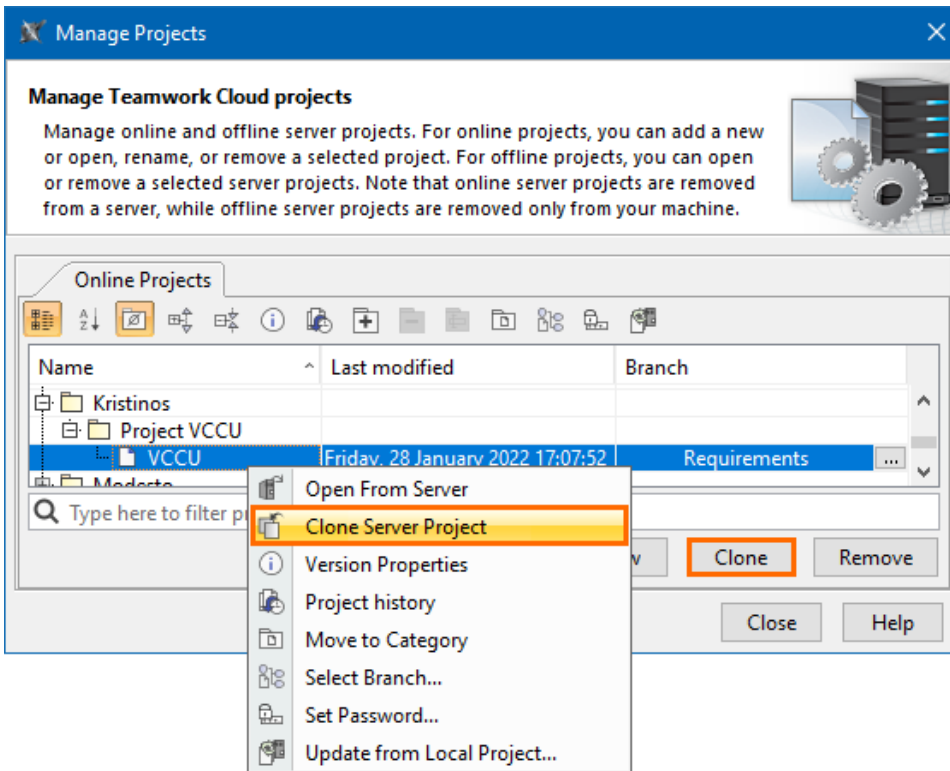
You can use the search bar to filter used projects faster by name.

- (Optional) To clone a branch of a chosen project, select the project and do one of the following:


- Click the **Select Branch** button.
- Click the three dots button in the **Branch** section.
- Right-click the project and select **Select Branch**.  
Select the branch you want to clone in the **Select Branch** dialog and click **OK**.



- To clone the selected project or branch, do one of the following:
  - Click the **Clone** button.
  - Right-click the project and select **Clone Server Project**.



5. The **Clone Server Project** dialog opens, wherein you need to type the name of the cloned project, select a category to save the project and/or add a comment. Click **More**, if you want to add a tag for the project.
6. Click **Clone** when you are done.
7. Close the **Manage Projects** dialog.

 Before using the cloned project with Teamwork Cloud web applications, [commit the newly cloned project to the server](#).

#### Related pages

- [Adding projects to Teamwork Cloud](#)