

# 2021x Refresh1 Version News





Released on: June 4, 2021

The 2021x Refresh1 release adds yet another set of performance, integration, general modeling, and collaboration improvements.

Collaborative modeling has been extended to assess the impact of element modification or deletion in other projects an element is used in, enable users to conveniently organize projects into the nested categories, customize the representation of Teamwork Cloud users in the modeling tool, and quickly return to the Merge dialog to change the merge decisions.

To download the latest MagicDraw version, see [Downloading installation files](#). Don't forget to give us your feedback on [LinkedIn](#), [Twitter](#), or [Facebook](#). For further information, check the [product documentation](#).

**2021x Refresh1 Hot Fix 2 available**  
Due to the Apache Log4j vulnerability issues, the 2021x Refresh1 HF2 has been released on March 4, 2022. The HF2 addresses Log4j 1.x and 2.x versions.

**2021x Refresh1 Hot Fix 1 available**  
Due to the Apache Log4j vulnerability issues, the 2021x Refresh1 HF1 has been released on December 22, 2021. The HF1 addresses Log4j 2.x versions.

Also, see the Knowledge Base article at <https://kb.dsxcient.3ds.com/mashup-ui/page/resultqai?id=QA00000102301e>.

**Performance Improvements**

- Numbering validation
- Element selection

For more information, see [CATIA Magic and No Magic products affected by Log4j vulnerability - CVE-2021-44228, CVE-2021-45046, CVE-2021-44832](#).

Also, see the Knowledge Base article at <https://kb.dsxcient.3ds.com/mashup-ui/page/resultqai?id=QA00000102301e>.

- Time consumption on large server projects (Report Wizard)
- Ignoring Smart Package Calculation in Tables and Matrices
- Freezing Smart Package Contents

**Integrations**

- Importing Variability Data From the ENOVIA Model Definition Application

**Modeling and Infrastructure**

- Tree View in Select Element Drop-Downs and Quick Find
- Other Improvements

**Collaboration**

- Global Element Usage Search
- Nested Categories
- Representation of Teamwork Cloud Users
- Returning to Merge Dialog

**Other Teamwork Cloud-related Improvements**

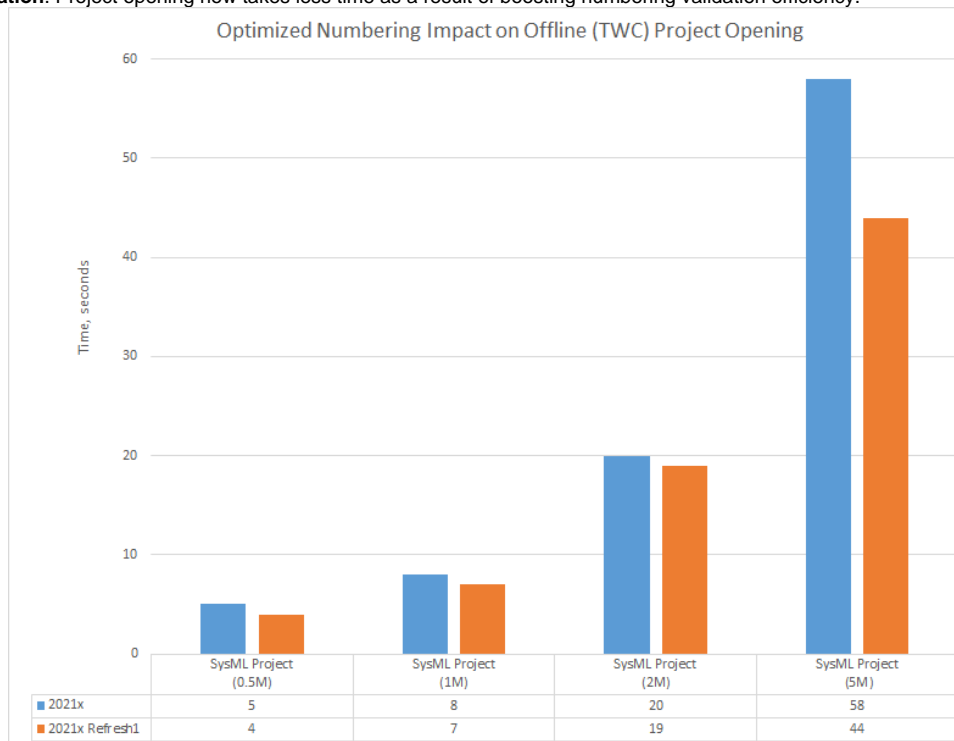
**Report Wizard**

**Key Issues Fixed**

**Discontinued Products**

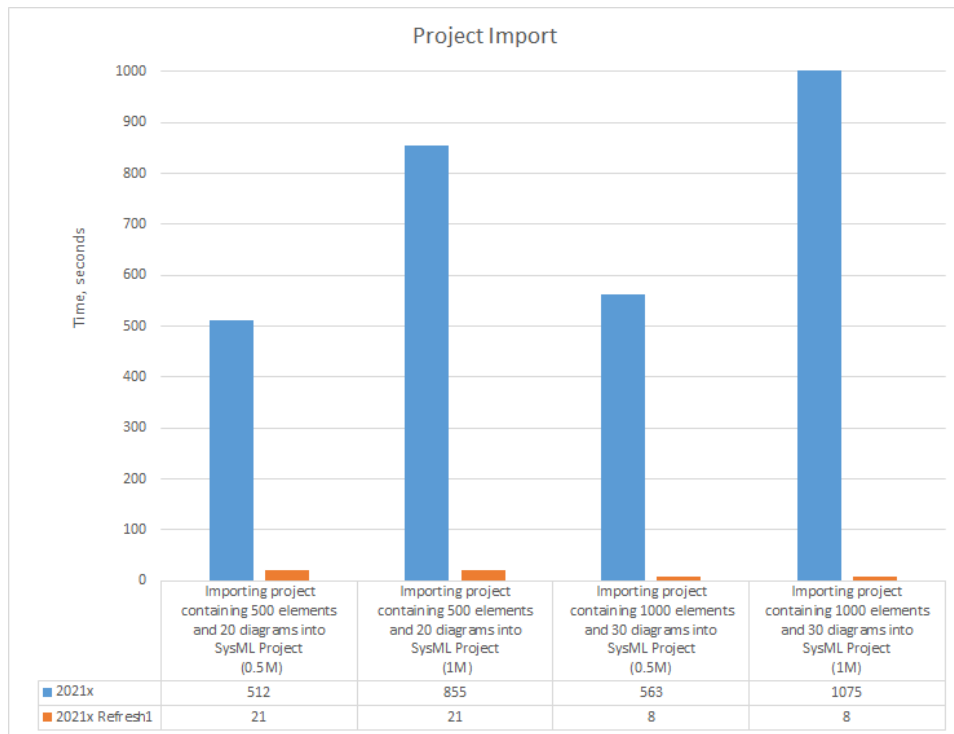
**Performance Improvements**

- **Numbering validation.** Project opening now takes less time as a result of boosting numbering validation efficiency.



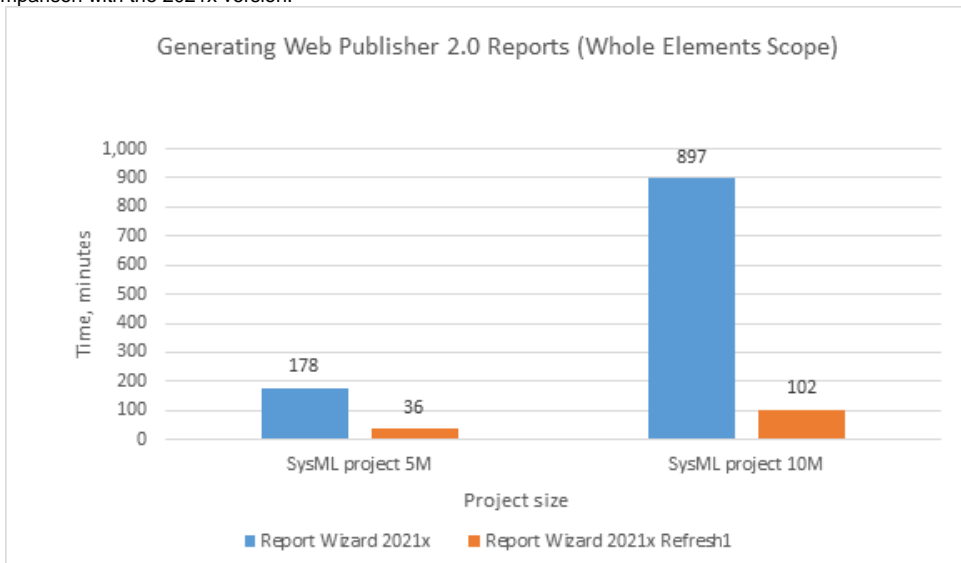
A chart comparing the project opening speed in 2021x and 2021x Refresh1 SysML projects with 0.5M, 1M, 2M, and 5M elements.

- **Element selection.** Further improvements have been introduced to element selection (i.e., the **Select Element** dialog and drop-down lists) performance. The stereotyped element search is now performed approximately 20-200 times faster.
- **Import from another project.** Projects can be imported much faster as the import operation now works more like Copy/Paste rather than Merge.



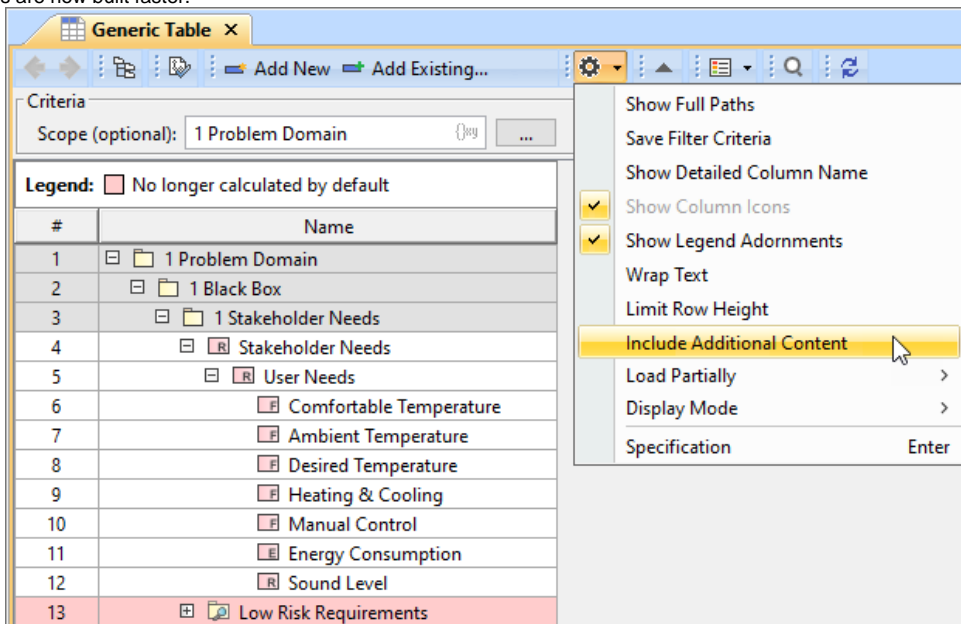
A chart comparing the sample project import speed in 2021x and 2021x Refresh1 SysML projects with 0.5M and 1M elements.

- **Time consumption on large server projects.** Report Wizard now utilizes significantly less time on large server projects using the Web Publisher 2.0 template, in comparison with the 2021x version.



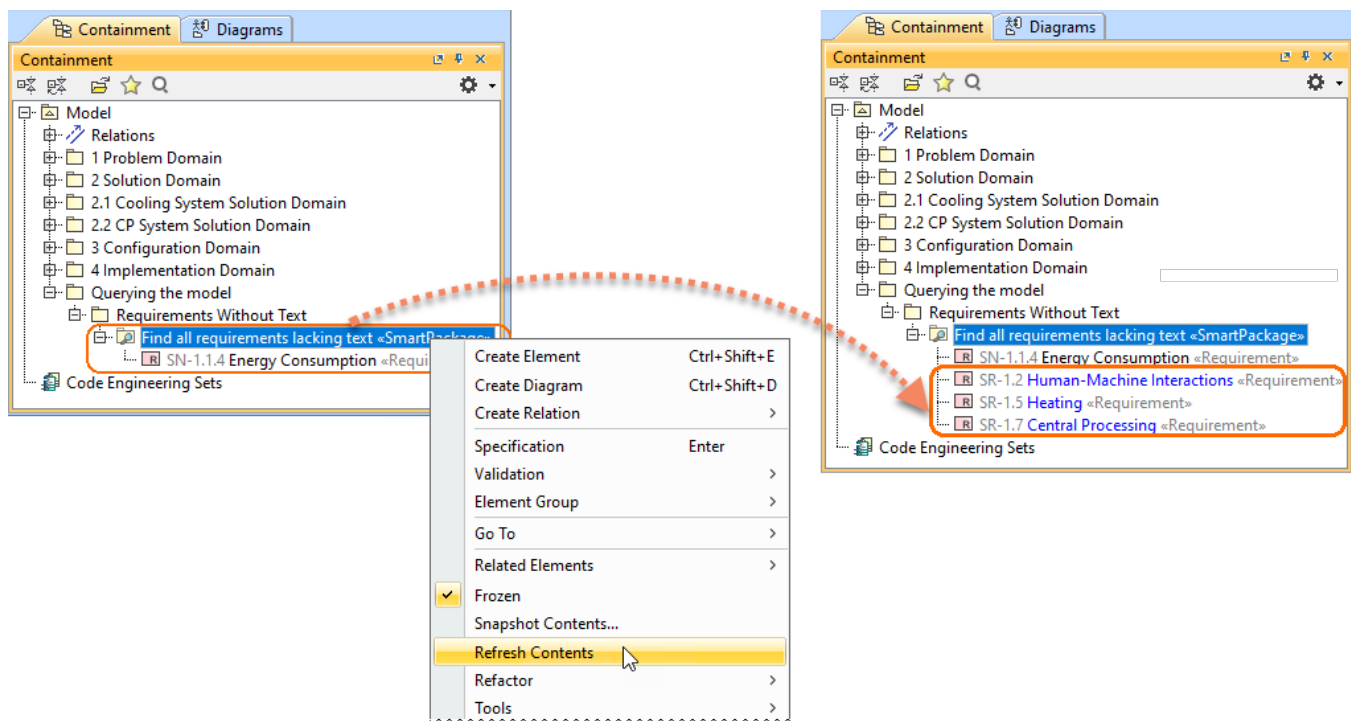
A chart displaying the results of performance testing between SysML project 5M and 10M sizes in the whole elements scope.

- **Ignoring Smart Package Calculation in Tables and Matrices.** Depending on the complexity and the total number of Smart Packages within the specified scope in tables and matrices, significant performance degradation can be caused while building tables and matrices. Since the 2021x Refresh1, the inner Smart Packages are no longer calculated by default unless you turn on the **Include Additional Content** option. Consequently, tables and matrices are now built faster.



The contents of a Smart Package that falls within the specified scope is excluded when building a table.

- **Refreshing Smart Package contents on demand.** You can now suspend the automatic Smart Package contents recalculation in the background to enhance performance by simply changing the Smart Package state to Frozen. As a result, elements are no longer automatically added to the Smart Package contents; however, the dynamic contents can still be refreshed on demand by clicking the button.



Refreshing the Smart Package contents on demand.

[Learn more about freezing the contents of Smart Packages >>](#)



Four SysML projects in 2021x that were used to run the performance tests, ranging from 0.5M to 5M in size, are equal in size to projects of earlier versions with sizes ranging from 1M to 10M.

[Back to Top](#)

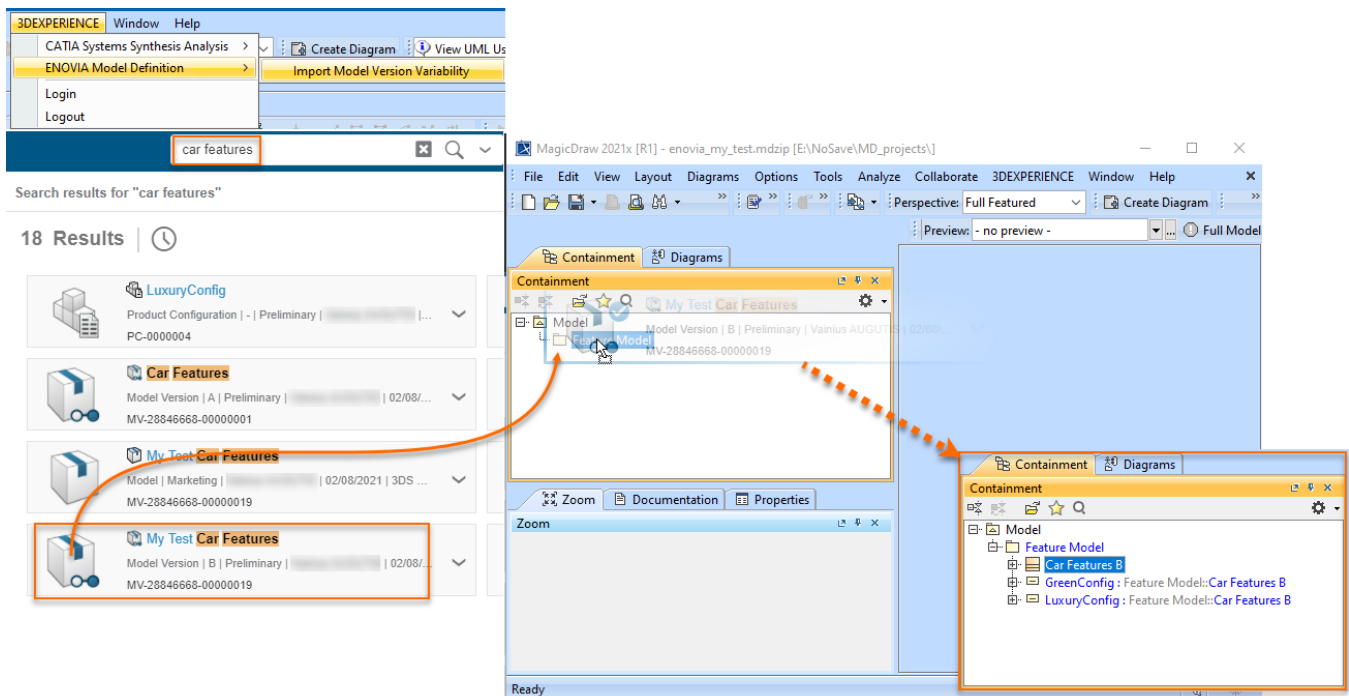
Integrations

## Importing Variability Data From the ENOVIA Model Definition Application



This functionality is available with the [3DEXPERIENCE ENOVIA Model Definition Integration](#) and [Product Line Engineering](#) plugins.

Import variability data to your modeling tool project directly from the 3DS ENOVIA Model Definition application on the 3DEXPERIENCE platform. The 3DEXPERIENCE ENOVIA Model Definition Integration plugin is available for your modeling tool (together with the Product Line Engineering plugin).



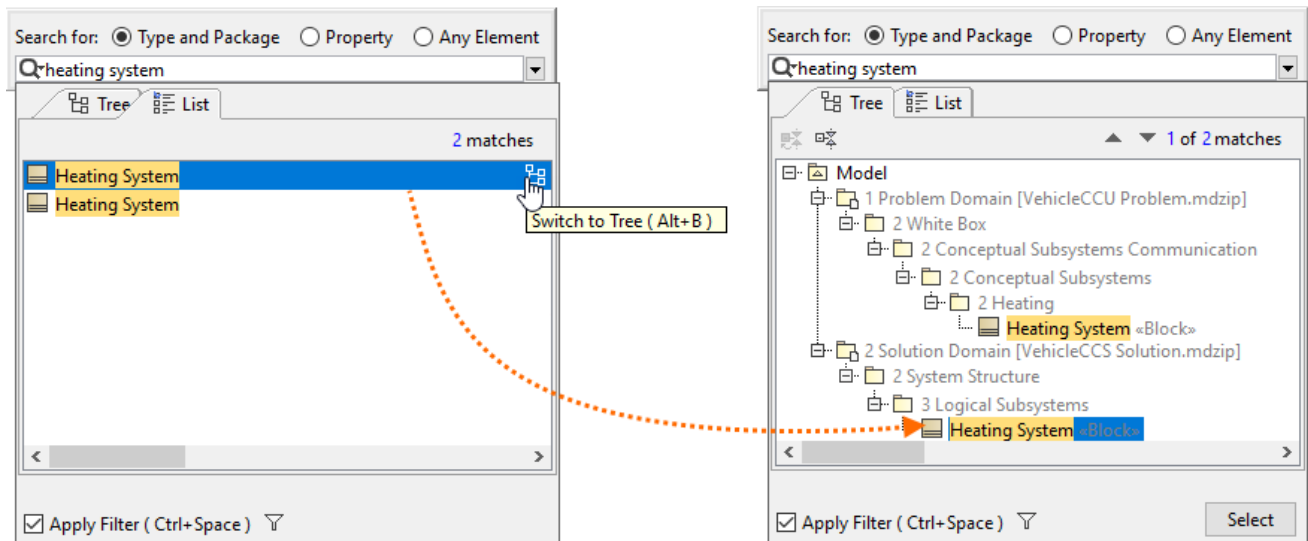
[Learn more about importing ENOVIA models >>](#)

[Learn more about authenticating with 3DEXPERIENCE platform >>](#)

## Modeling and Infrastructure

### Tree View in Select Element Drop-Downs and Quick Find

Quick Find and Type Selection drop-downs have been enhanced with the **Tree** view. In cases when multiple elements share the same name, it will no longer be confusing as to which one to select: all you need to do is switch to the Tree view to identify the element's place in the model hierarchy.

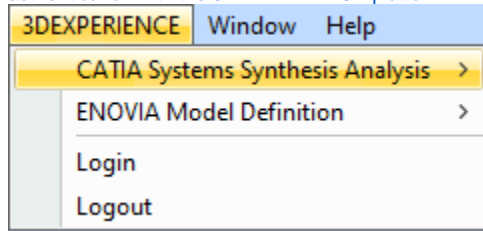


Switching between the Tree and List views to find the needed element faster.

### Other Improvements

- The **3DEXPERIENCE** menu item groups all available integrations with the 3DEXPERIENCE platform. When you install plugins that support integration with the platform, all their available functionalities will be added under the **3DEXPERIENCE** menu. [Learn more about](#)

[authentication with the 3DEXPERIENCE platform >>](#)



- Since the *UsagelnDiagrams* Opaque Behavior is a time-consuming operation (it loads all diagrams - matrices, tables, and maps), it has been deprecated and replaced with the *UsagelnDiagramsWithSymbols* Opaque Behavior that searches for symbol usages only. [Learn more about built-in operations >>](#)

[Back to Top](#)

## Key Issues Fixed

The following key issues have been fixed with this version:

- Improved performance - Smart Packages that fall within the tracking scope are no longer automatically calculated when the **Suspect Links > Show Suspicions** command is executed.
- The problem with Java sign-in is solved and the modeling tool now launches on macOS Big Sur without warnings.
- The project update no longer fails when the standard profile has no internal version specified.
- The modeling tool no longer becomes unresponsive when the element search is in progress.
- The diagram is no longer scaled incorrectly on mouse click/drag.
- The filtered changes are now accepted/rejected recursively when performing the merge operation.
- The information in structured expression queries is properly updated when adding projects to Teamwork Cloud.
- The element refactoring no longer fails when the Legend item is applied.
- The applied Legend item adornments are no longer removed after saving a Teamwork Cloud project locally.
- The Diagram Info box in the diagram no longer changes its position after performing the merge operation.
- Action pins no longer remain synced to Activity when the action behavior is unset.
- Associations are no longer moved when centering Classes vertically.
- The modeling tool no longer freezes when publishing large projects to Teamwork Cloud.
- When two different custom prefixes are applied for two different sets of elements, the element renumbering no longer works incorrectly for the set of elements with one custom prefix.

[Back to Top](#)

## Discontinued Products

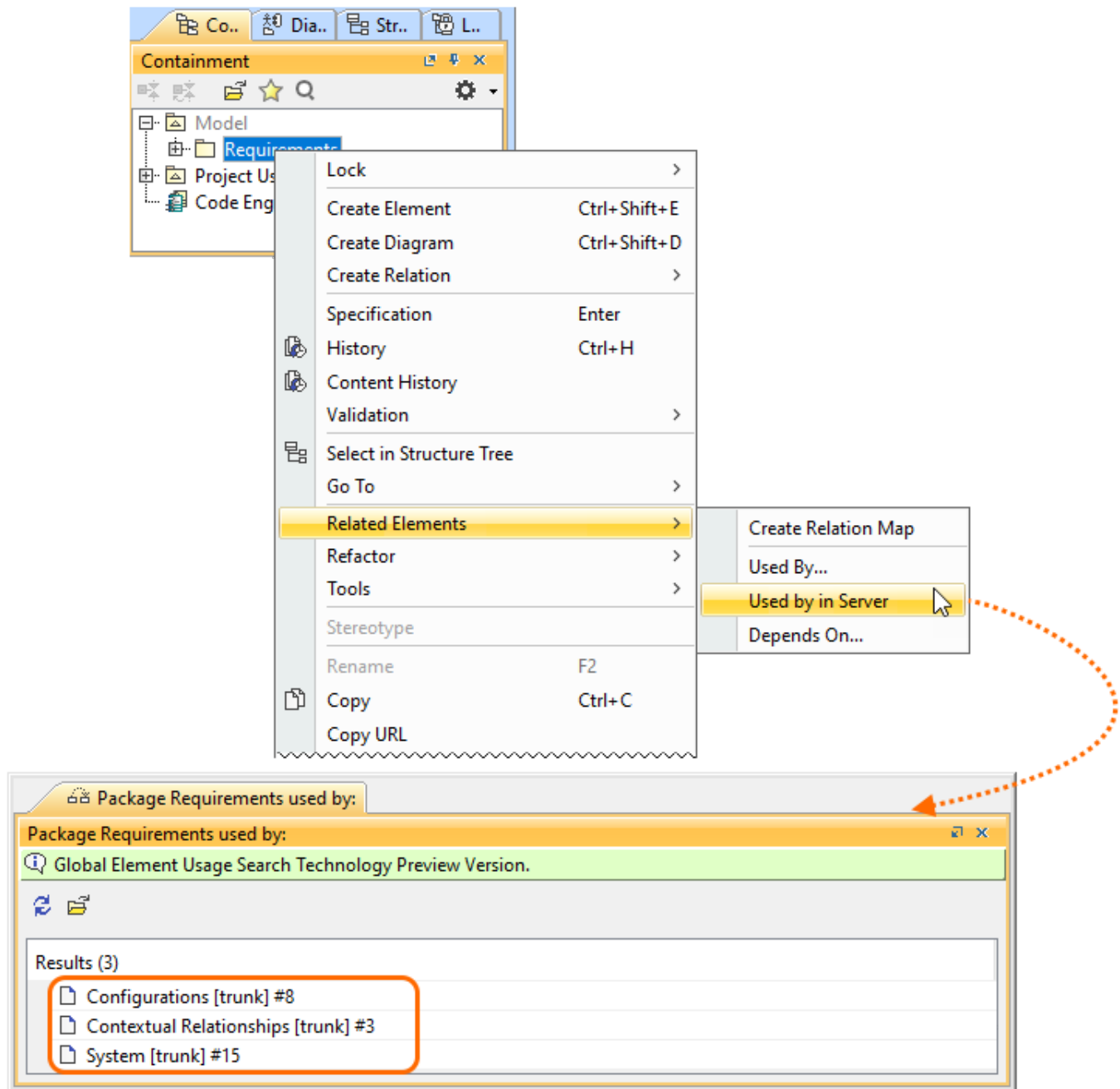
**CSV Import Plugin** support will be discontinued from the next major version. [Excel/CSV Sync](#) or [Excel/CSV Import](#) features will be replacing the CSV Import Plugin.

[Back to Top](#)

## Collaboration

### Global Element Usage Search

No more accidental Recovered Elements and unexpected surprises when updating Used Project versions! The latest release introduces the global element usage search functionality that allows you to query for the usages of the element you are about to modify or delete. Depending on the server-side configuration, projects using the element in question can be returned either from the entire Teamwork Cloud repository or the chosen custom indexed scope.

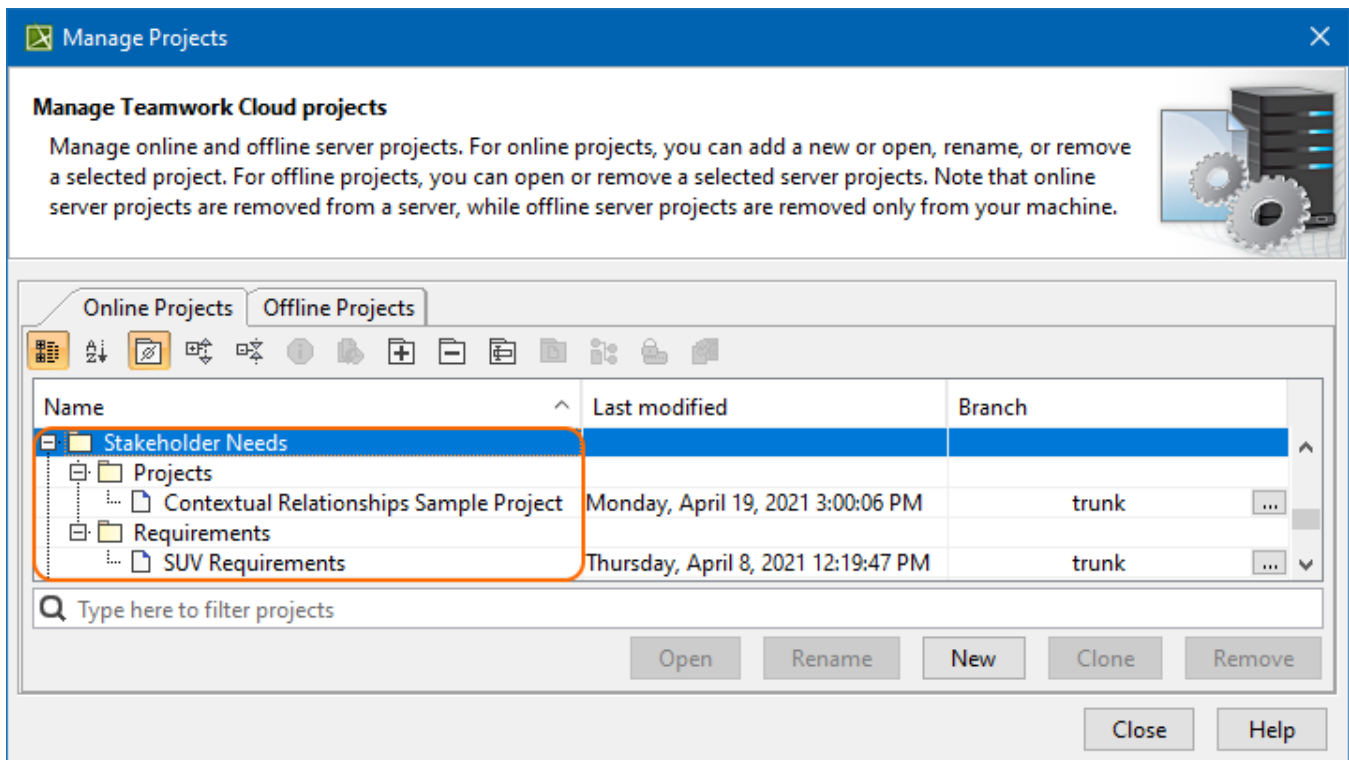


Searching for element usages within the Teamwork Cloud repository.

[Learn more about global element usage search >>](#)

## Nested Categories

Do your projects need to be grouped hierarchically? Are you seeking to organize them in a folder-like manner? We have a solution! You can now organize your projects into nested categories so you can find them later with no difficulty.

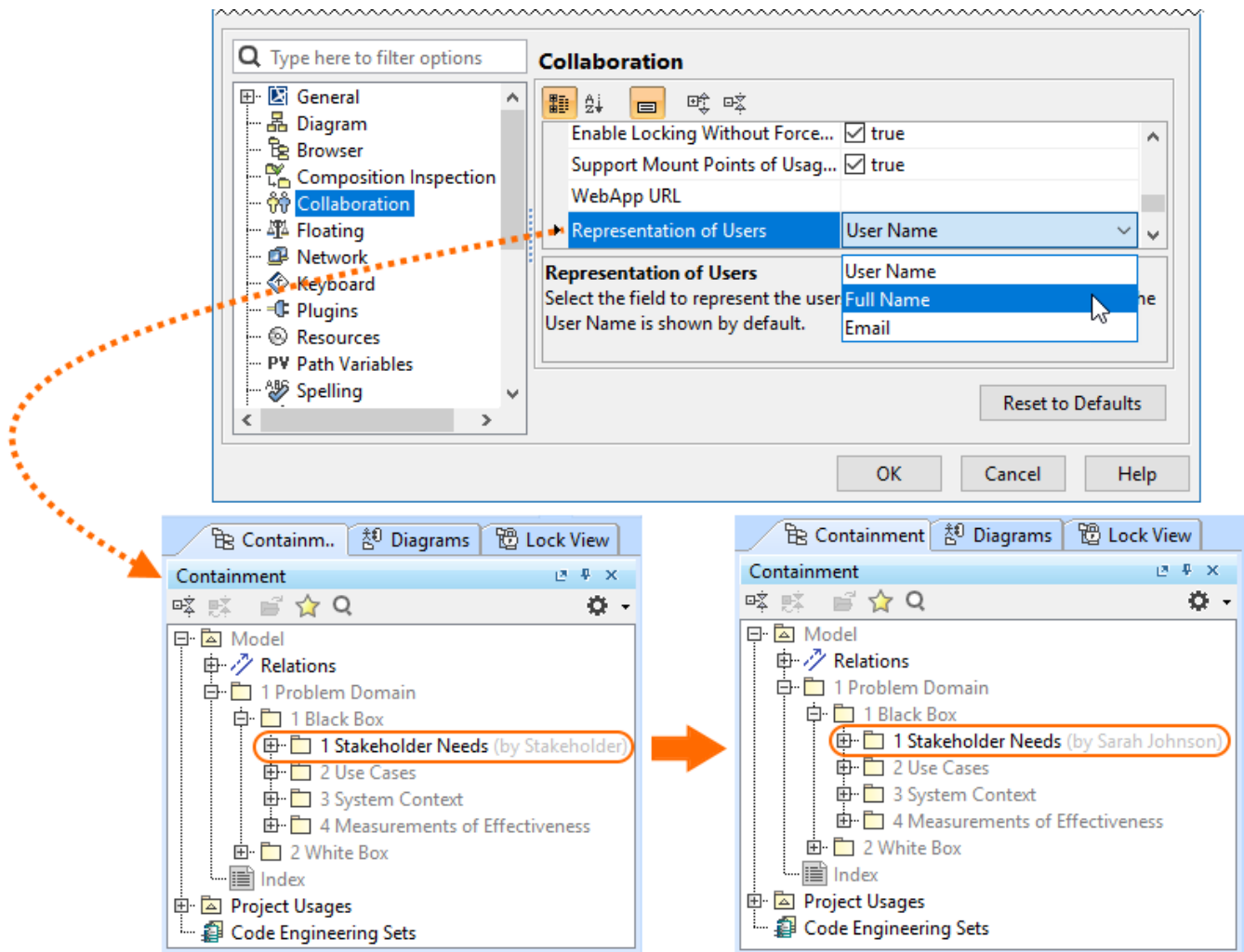


Organizing server projects into nested categories.

## Representation of Teamwork Cloud Users

You now have the freedom to customize how individual Teamwork Cloud users are represented in the modeling tool (for example, when they lock elements) by simply changing the value of the **Representation of Users** environment option. It is your choice whether a User Name, a Full Name, or an Email address is shown to identify them.



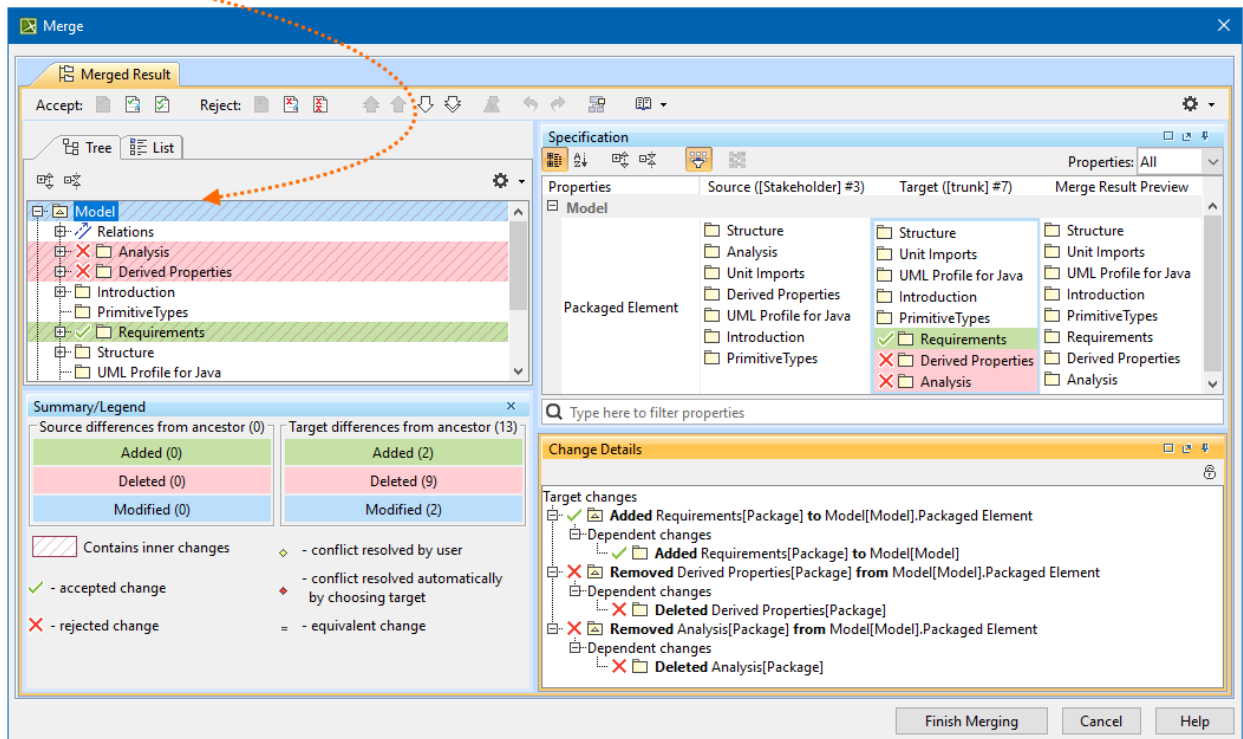
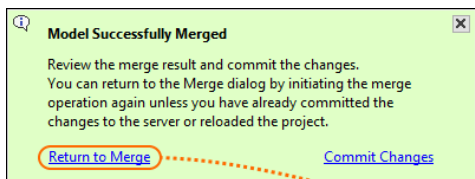


Changing the user representation in the Teamwork Cloud project.

[Learn more about representation of Teamwork Cloud users >>](#)

## Returning to Merge Dialog

Need to make some adjustments after finishing the merge operation? Not a problem! You can now quickly return to the previously performed merge operation if you notice that you have accepted or rejected the changes (e.g., rejected the element creation) by mistake and need to change your merge decisions.



Returning to the **Merge** dialog to change merge decisions.

[Learn more about returning to Merge dialog >>](#)

## Other Teamwork Cloud-related Improvements

- Filters in the **Merge** dialog have been redesigned to improve the user experience.
- Updating a server project with local changes in disconnected team collaboration now handles the Used Project branch deletions more effectively, with no errors.

[Back to Top](#)

## Report Wizard

- Groovy Tool now supports use of relative paths, apart from Groovy file names and absolute paths, starting from the template to the Groovy file. [Learn how to deploy this feature >>](#)
- Report Wizard 2021x Refresh1 allows specifying DPIs of images in generated reports at three levels: global, template, and object. [Learn more about this helpful function >>](#)
- Warning messages can be enabled and disabled through setting the **Report Environment** options in addition to editing the **config.xml**. [Find out more about disabling/enabling warning messages through the Report Environment options >>](#)
- The Web Publisher 2.0 template can now show applied stereotypes of elements in the Containment tree. [Learn how to utilize this function >>](#)
- An increasingly effective utility of the Presentation Report Designer diagram has been ultimately designed for designing and generating PPTX and ODP templates. [Discover Presentation Report Designer more >>](#)
- With **\$report.getMetaClass(\$element)**, you are able to acquire a metaclass from a specific stereotype element. [Learn about this function more >>](#)
- The SVG image format is more inclusively supported for text, HTML, DOCS, and DOCBOOK templates for report generation. [Learn more how to achieve this capability through the user interface >>](#)
- The Dialog tool has additionally applied the capability of hiding element icons to the **Sort and Enable** and **Selection** dialogs. [Discover further detail of its applications >>](#)
- You can now use both the relative and absolute paths of the image file on your system to display it as a homepage image by utilizing the **HomeImage** variable of the Web Publisher 2.0 template. [Know more about how this function works >>](#)
- A new creation of the **loadmodule** command deployed with the Generate command helps load all unloaded modules while opening MagicDraw projects. [Get familiar with loading all unloaded modules >>](#)
- The exported image scaling option for Web Publisher 2.0 reports has become available in Report Wizard 2021x Refresh1, so that you can reduce, maintain, and enlarge the image size percentage. [Find out how to make use of this option >>](#)

## Version news of servers and plugins

- [Teamwork Cloud 2021x Refresh1](#)
- [SysML Plugin 2021x Refresh1](#)
- [Cameo Simulation Toolkit 2021x Refresh1](#)
- [UAF Plugin 2021x Refresh1](#)
- [Cameo DataHub 2021x Refresh1](#)

#### **MagicDraw Documentation**

- [MagicDraw 2021x Refresh1](#)

#### **News of earlier versions**

- [MagicDraw 2021x](#)
- [MagicDraw 19.0 LTR SP4](#)
- [Product News Archive](#)