

# Distributing custom diagrams

## On this page

- [Distributing custom diagrams using Resource Manager](#)
- [Distributing custom diagrams using Customize Diagrams dialog](#)

A [custom diagram](#) can be exchanged with other users in a `.zip` file format, as any other resource, for manual import into the modeling tool using the [Resource Manager](#). Alternatively, you can export/import the custom diagram descriptor (the `.xml` file) using the **Customize Diagrams** dialog.

## Distributing custom diagrams using Resource Manager

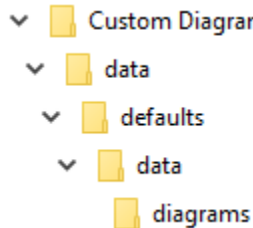
You need to build a `.zip` file containing a diagram descriptor file (e.g., `descriptor.xml`) and a Resource Manager descriptor file (e.g., `MDR_CustomDiagram_MagicDraw_74842_descriptor.xml`) to be able to share your own custom diagram. For this, you need to use the **Development Tools** plugin. Once you generate and share the file, the diagram customization can then be imported into the modeling tool by another user via the **Resource Manager** for future use and accessibility.

### Warning

You can build a `.zip` file for custom diagram distribution only after you have [created a new diagram type](#) or [edited an existing standard diagram](#).

To create a `.zip` file using the **Development Tools** plugin

1. On your local file system, create the following folders structure: `...\\Custom Diagram Resource>\\data\\defaults\\data\\diagrams`.



2. Launch the modeling tool.

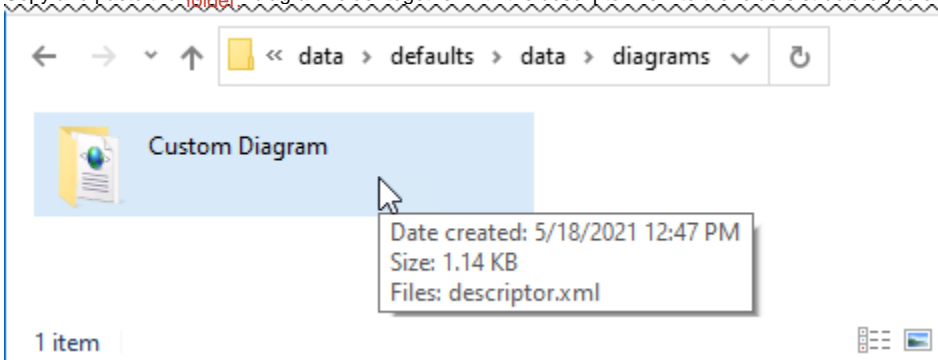
3. Do one of the following:

- - a. In the main menu, go to **Help > About**.
  - b. Next to **Configuration Files**, click the file location path. The configuration files folder opens.
  - c. Under `<configuration files>\\data\\diagrams`, locate your custom diagram folder containing a descriptor.
- - a. In the main menu, go to **Diagrams > Customize**.
  - b. In the **Customize Diagrams** dialog, select the custom diagram whose descriptor file you want to export and click the **Export** button.

### Warning

Before the export operation, create a new folder on your local file system and give it the name of your custom diagram, such as `Custom Diagram`. The exported descriptor file needs to be renamed to `descriptor.xml` and saved in this newly-created folder.

4. Copy and paste the custom diagram folder together with the descriptor file into the folders structure you created in the first step.



### Distributing Profiles

If you have specified Profiles when customizing a diagram, it is highly recommended that you distribute them together with your custom diagram. For this, create the *Profiles* folder under the custom diagram resource root folder and place all required Profiles in it before generating a .zip archive.

5. Download and install the **Development Tools** plugin.


6. Restart the modeling tool.

7. In

8. In

9. Click

The resource (.zip file) is built. It can now be distributed and imported into the modeling tool using the Resource Manager.

 You need to mark each Profile distributed together with a custom resource as **Standard/System Profile** (**File > Project Properties > More**

**Standard/System Profile**) to store it locally. Profiles stored on the server cannot be used for a custom diagram.

### Info

A created custom diagram resource (.zip) can be bundled into the resource distribution file (.rdzip) using the **Development Tools** plugin for distribution alongside other resources. [Learn more about building a resource distribution file>>](#)

### Distributing custom

You can export the custom di and imported into the modelin

 Profile.mdzip

5/18/2021 12:19 PM

MDZIP File

49 KB

Profile

1 item

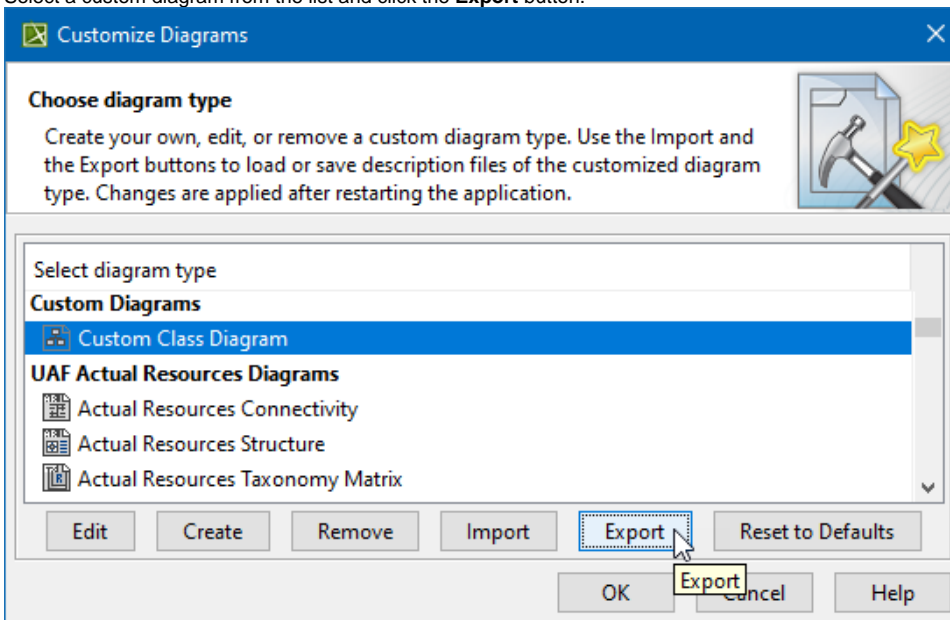
ed with others

### Warning

You can export an .xml file for custom diagram distribution only after you have created a new diagram type or edited an existing standard diagram.

To export a custom diagram descriptor

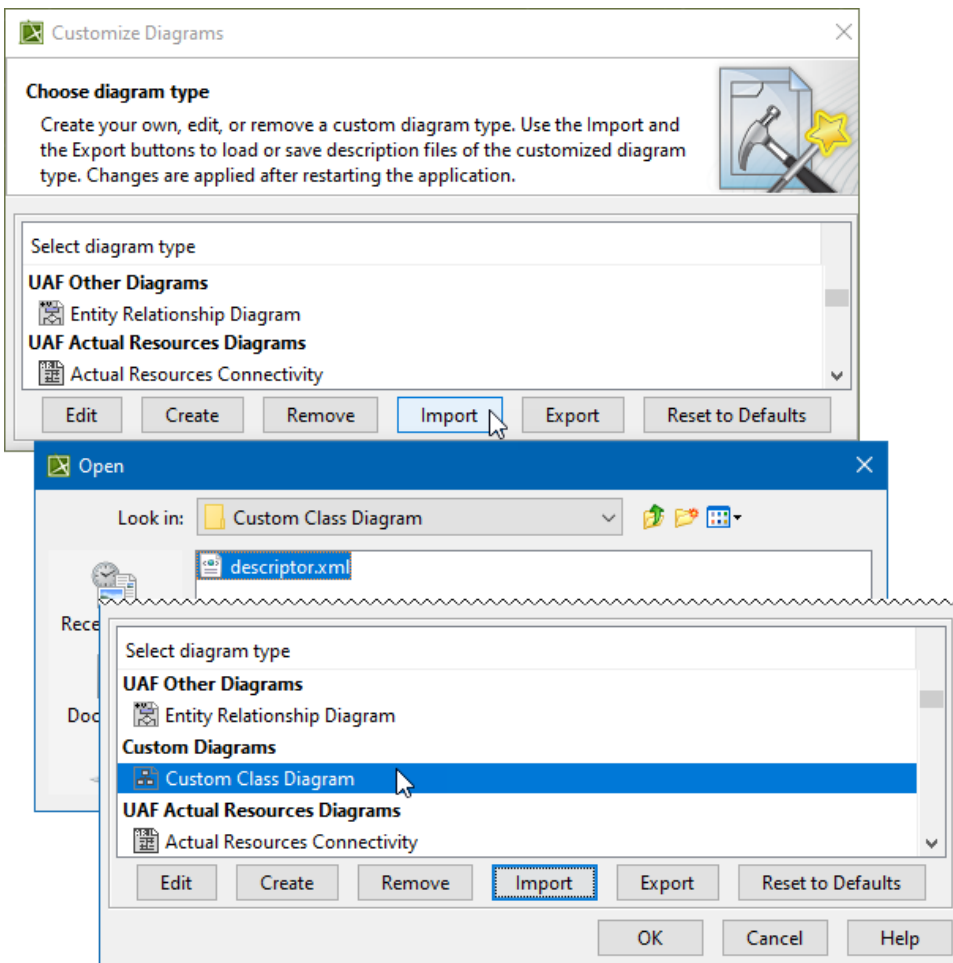
1. In the main menu, go to **Diagrams > Customize**.
2. Select a custom diagram from the list and click the **Export** button.



The .xml file is exported. You can now distribute it.

To import a custom diagram descriptor into the modeling tool

1. In the main menu, go to **Diagrams > Customize**.
2. Click the **Import** button and point to a descriptor (.xml) on your local file system.



The `.xml` file is imported, and a new diagram type appears under **Custom Diagrams** in the **Customize Diagrams** dialog.