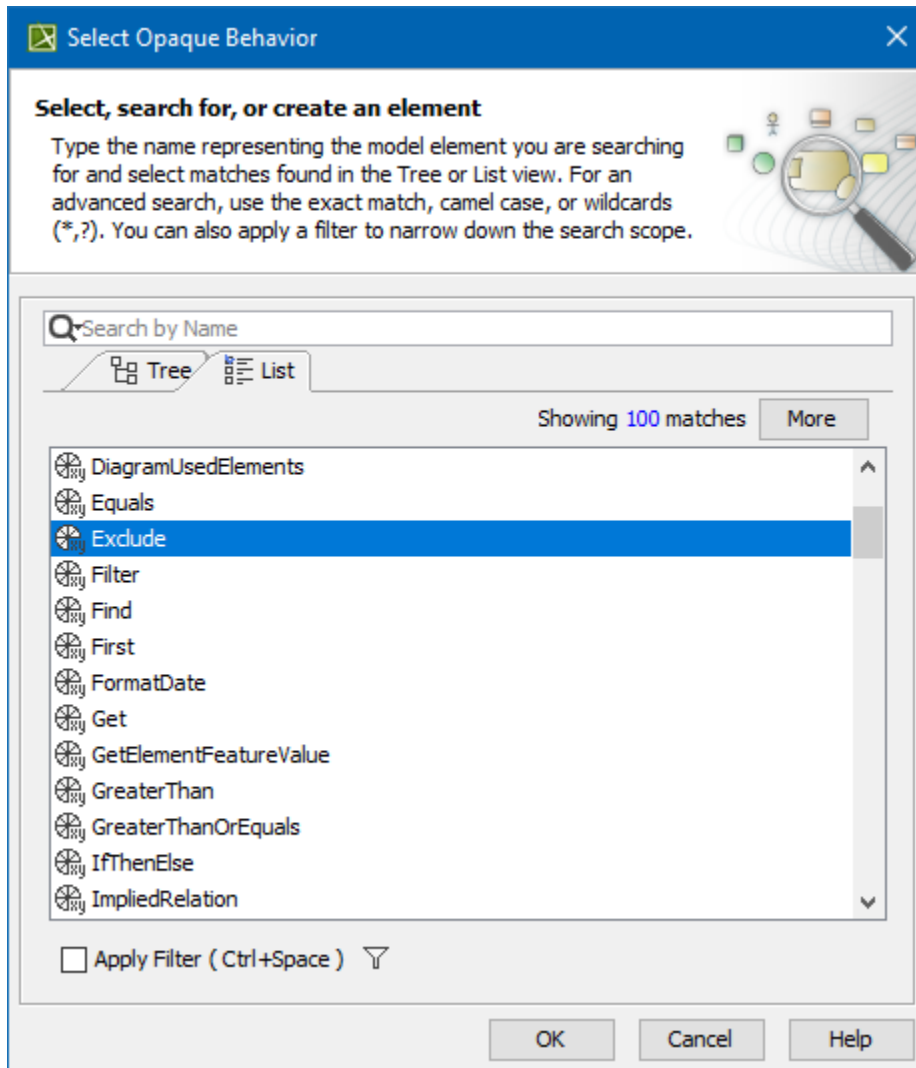


# Calling operations from the model

## On this page

- [Built-in operations](#)
- [Creating executable opaque behaviors](#)

In a structured expression, you can call an operation defined in the model. An operation from the model can be either built-in or custom. The built-in operations, such as Union, Find, or Filter, are stored as executable opaque behaviors in the *Built-In Operations* package, which is owned by *UML Standard Profile::MagicDraw Profile*.



Be sure the **Exclude Used Projects** command on the Filter Options button menu is unchecked!

## Related pages

- [Creating new operations](#)
  - [Creating script operations](#)