

# Case 7.2. Filter Properties Redefined by Specific Property

To filter Properties Redefined by a Specific Property

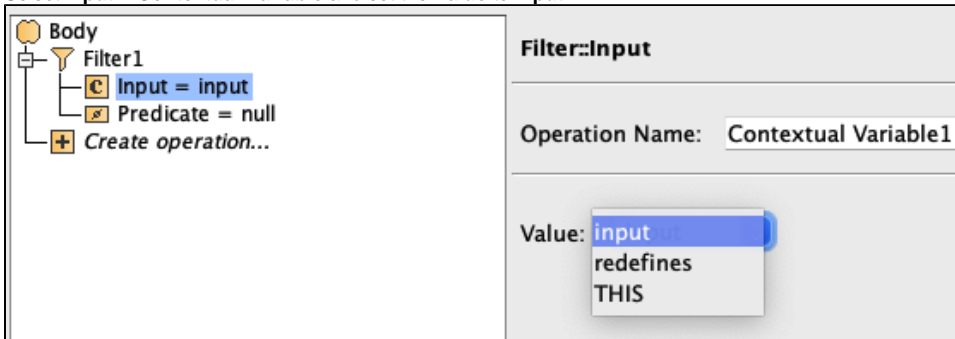
1. Create an **Opaque Behavior** named 'Filter Properties Redefined by Specific Property'.
2. Right-click the **Opaque Behavior** element/symbol and open its **Specification window**. Do one of the following:
  - a. Click the plus sign next to the **Owned Parameter** property to edit it.

If you cannot see the **Owned Parameter** property, make sure the **Expert** mode is enabled.

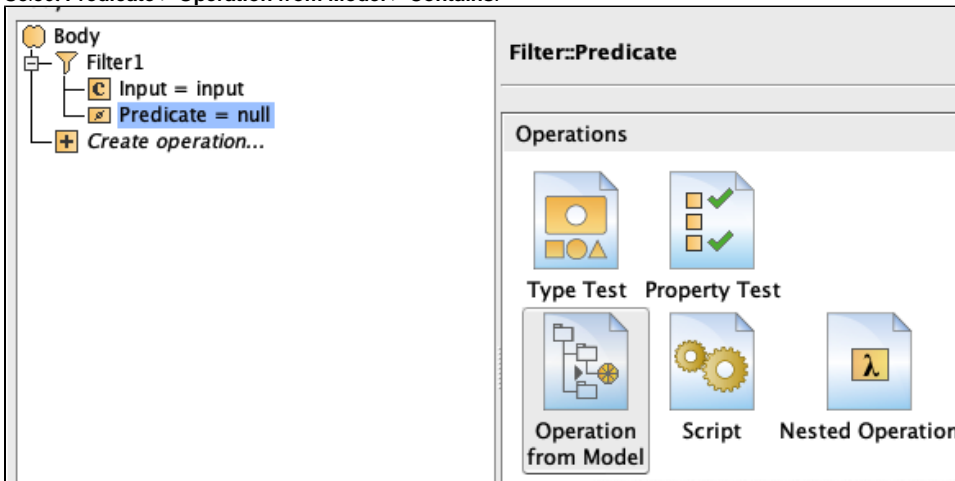
- b. On the left side menu, select **Parameters > Create**.
3. In the **Specification of Parameter window**, set **Name** to **input**, **Type** to **Element**, **Direction** to **in**, and **Multiplicity** to **[1..\*]**. Click **Back**.
  4. Create a second parameter.
  5. Set **Name** to **redefines**, **Type** to **Property**, **Direction** to **in**, and **Multiplicity** to **[1]**. Click **Close**.
  6. In the **Opaque Behavior Specification window**, click three dots **...** next to the **Body and Language** property to edit it.
  7. In the **Body and Language** dialog, select **Language > StructuredExpression**.
  8. Click **Create Operation > Filter**.

If you cannot see the **Filter** operation under **Operations**, make sure the **Expert** mode is enabled.

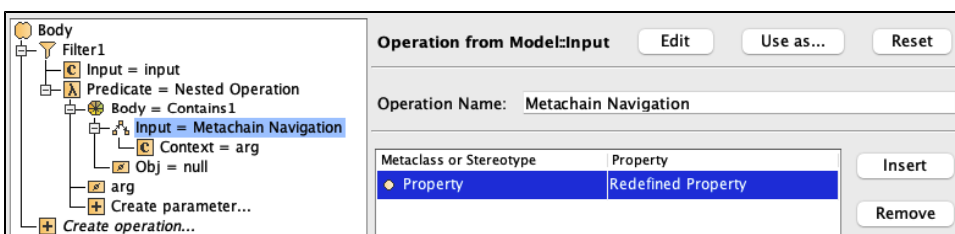
9. Select **Input > Contextual Variable** and set the **Value** to **input**.



10. Select **Predicate > Operation from Model > Contains**.



11. Select **Body > Input > Metachain Navigation**.
12. Click **Insert**.
13. Under **Metaclass or Stereotype**, select **Property**, and under **Property**, select **Redefined Property**.



14. Select **Obj > Contextual Value > redefines**.

Body

Filter1

Input = THIS

Predicate = Nested Operation

Body = Contains1

Input = Metachain Navigation

Obj = redefines

arg

Create parameter...

Create operation...

Operation from Model::Obj

Operation Name: Contextual Variable1

Value: redefines

input

arg

THIS

15. Click **OK**.

**Sample model**

The model used in these examples is the *Case Studies for Querying the Model* sample model. To open this model, you need to download [case studies for querying the model.mdzip](#).