

Setting package permissions


On this page

- [Modify package permissions](#)
 - [Inheritable permissions](#)
- [Modify global permissions and review package permissions](#)

Modify package permissions

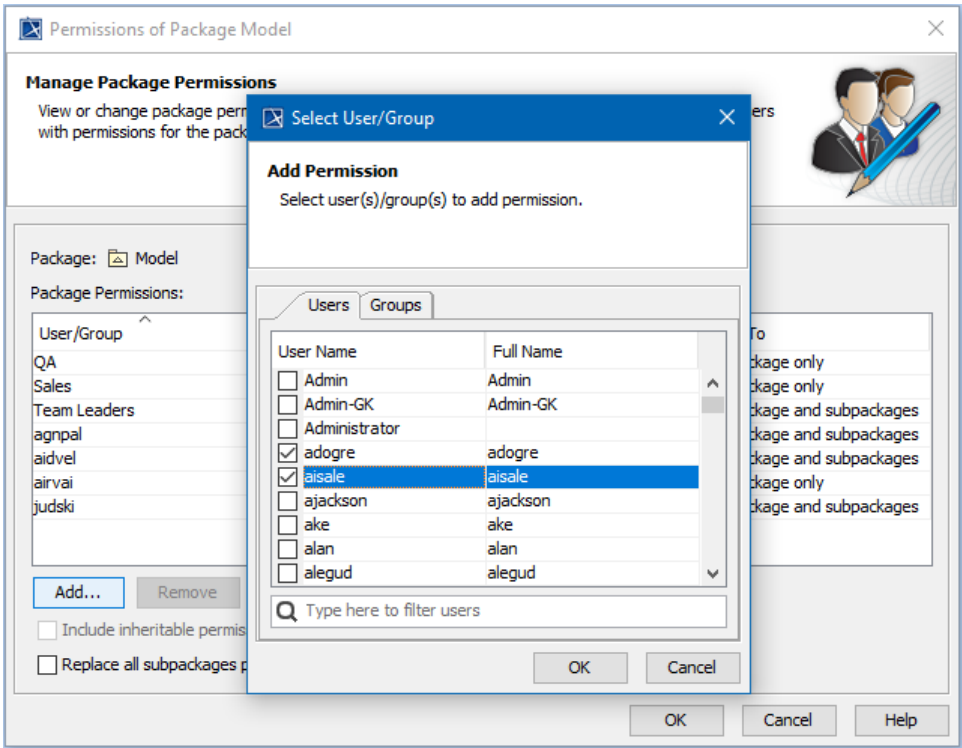
To modify the permissions of the package

1. Right-click the package or its shape and select **Permissions**. The **Permissions of Package** dialog opens.



The full name of the dialog depends on the selected package name. Thus, if you select to modify the permissions of the package *domain*, the **Permissions of Package domain** dialog opens.


2. Add new package permission:
 - a. Click the **Add** button under the **Package permissions** table. The **Select User/Group** dialog opens.
 - b. Use the search bar to filter users or groups, then click to select the check box near the user or group name.



- c. Click **OK** and see the new row appeared in the **Package permissions** table.
 - d. Click the **Permission** cell and select:
 - **Read-Only** to restrict editing of the package for the selected user/group.
 - **Read-Write** to allow editing of the package for the selected user/group.
 - e. If you don't want to apply the same permission on the subpackages of this package, click the **Apply To** cell and select **This package only**.
3. Add as many permissions as you need by repeating step 3.
 4. Close the **Permissions of Package** dialog.

Inheritable permissions

The **Permissions of Package** dialog includes a few options for handling inheritable permissions. The following table provides their descriptions.

Option	Description
Include inheritable permissions from the parent	<p><i>Inheritable permissions</i> of the package are those that apply to its subpackages as well.</p> <p>By default, these permissions are displayed together with individual permissions of every subpackage, but cannot be modified or deleted there. If you want to hide them, click to clear the check box.</p> <div> Let's say you have a package <i>Model</i> and a subpackage <i>Requirements</i>.</div> <p>If you set on the package <i>Model</i> the Read-Only permission for a certain user and leave the default setting to</p>
Replace all subpackages permissions with inheritable permissions from this package	<p><i>Inheritable permissions</i> of the package are those that apply to its subpackages as well.</p> <p>apply this permission on subpackages as well, the Permissions of Package dialog also displays the</p> <p>If the package, whose permissions you modify, has subpackages, you can choose to replace their individual permissions with those of the parent package. Make sure the appropriate permissions are set as inheritable and click to select the check box.</p>

Modify global permissions as

You can use the **Package permissions** dialog to modify permissions affecting all users for a project.

To review package permissions

Current package

Inheritable permission

Parent package

Package: Requirements

Package Permissions:

User/Group	Permission	Inherited From	Apply To
Marketing	Read-Only	Requirements	This package and subpackages
Sales	Read-Only	Model	This package and subpackages
agnpal	Read-Only	Requirements	This package and subpackages

Add... Remove

☒ Include inheritable permissions from the parent

- From the **Options** main menu, select


To modify package permissions

- Open the **Package permissions** dialog as described above.
- Click the value in the **Permission** cell of the **Package permissions** table set for the user/group and select:
 - Read-Only** to restrict editing of the package for the selected user/group.
 - Read-Write** to allow editing of the package for the selected user/group.
- If you don't want to apply the same permission on the subpackages of this package, click the **Apply To** cell and select **This package only**.

Package Permissions

Package Permissions Overview

You can change the global permission that affects all packages a project owns (all project users are affected), as well as change and remove the user permission for the selected package.



Global permission: Read-Only

Package	User/Group	Permission	Apply To
Model	kristina	Read-...	This package and ...
Model	ingabe	Read-Write	This package and ...
Model	agnpak	Read-Only	This package and ...

Remove

OK

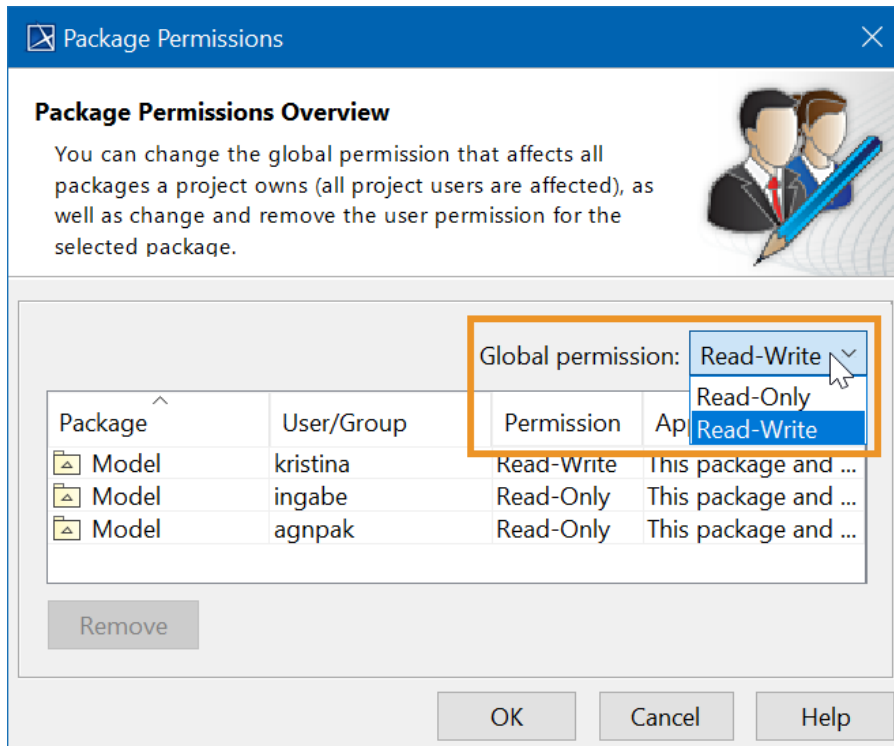
Cancel

Help

To modify global permissions

1. Open the **Package permissions** dialog as described above.
2. In the upper-right corner of the dialog, select the appropriate Global permission:
 - To allow editing of the entire model, select **Read-Write**.
 - To restrict editing of the entire model, select **Read-Only**.

Global permissions can be overridden by package permissions, e.g. Read-Only global permission can be overridden by a package with Read-Write permission. This allows the user/group to edit the package, whereas editing the rest of the model is restricted.



To copy permissions

1. Open the **Package permissions** dialog as described above.
2. Select the permission you want to copy.
 - To select multiple permissions, hold down the **Ctrl** key and select the permissions.
 - To select all permissions, click **Ctrl+A**.
3. Copy the selected permissions using **Ctrl+C**.
4. Paste the permissions (e.g., to an Excel document.)