

Cloning projects

You can clone the latest version of your server project as a separate project or the latest version of a project branch as a separate branch. The cloned project can be used as a "template" to create a new project or as an independent base for new development. IDs of a cloned project and elements are reset automatically. Project permissions are reset as well; the project is available only for the user who has cloned the project. All references to used projects (if there are any) are maintained.



- You can only clone either the latest version of a project or the latest version of a project branch.

To clone a project or a branch


- You need at least double the amount of memory to clone a project in comparison to opening a project.

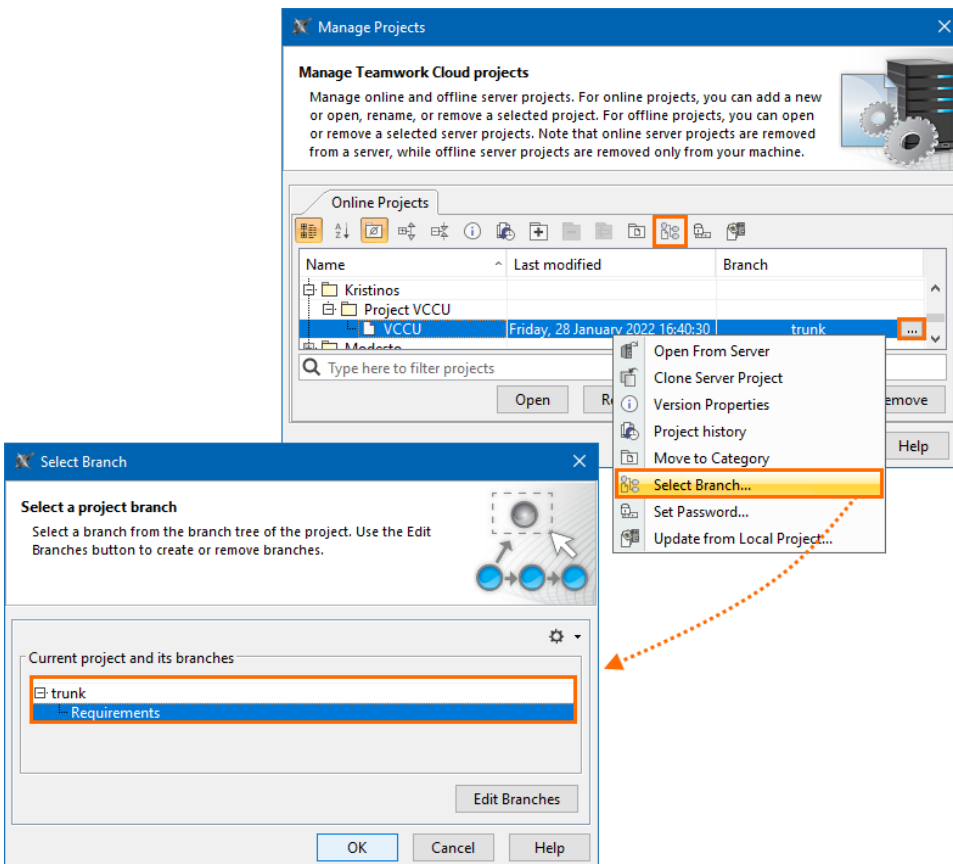
- On the main menu, click **Collaborate > Projects**. The **Manage Projects** dialog opens.
- To clone a project, select the project you want to clone.



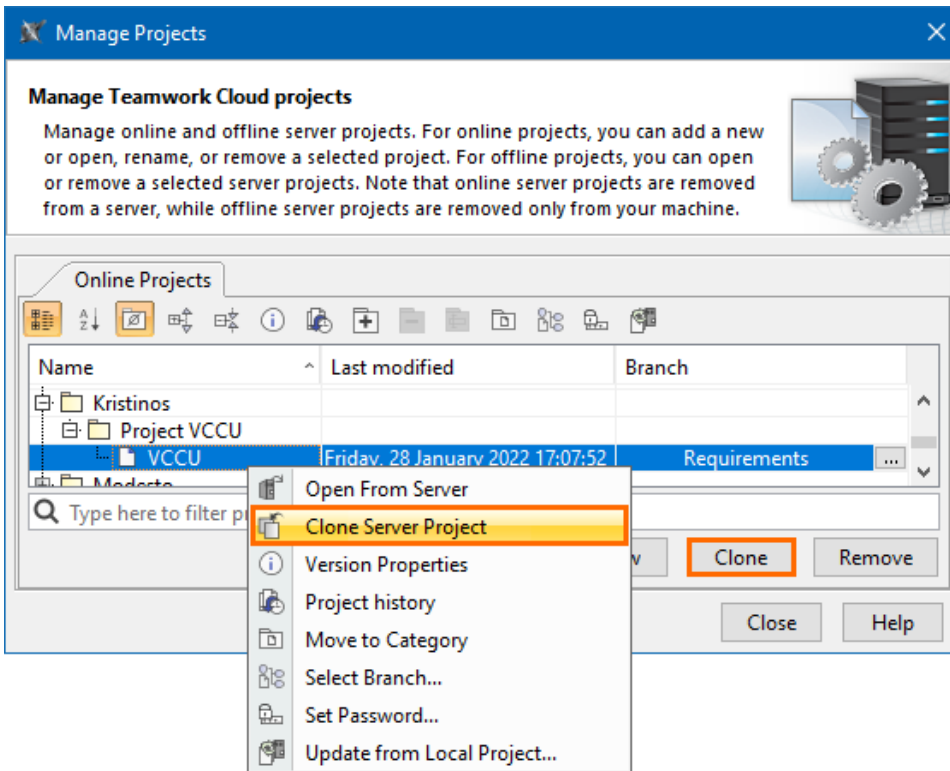
You can use the search bar to filter used projects faster by name.

- (Optional) To clone a branch of a chosen project, select the project and do one of the following:

- Click the **Select Branch** button.
- Click the three dots  button in the **Branch** section.
- Right-click the project and select **Select Branch**.
Select the branch you want to clone in the **Select Branch** dialog and click **OK**.



- To clone the selected project or branch, do one of the following:
 - Click the **Clone** button.
 - Right-click the project and select **Clone Server Project**.



5. The **Clone Server Project** dialog opens, wherein you need to type the name of the cloned project, select a category to save the project and/or add a comment. Click **More**, if you want to add a tag for the project.

6. (Optional) To clone with used projects, click **More** , select the **Used Projects** tab and check the **Clone Used Projects** check box. You can change the names of the cloned used projects in the **New Name** section once the **Clone Used Projects** check box is selected.

Clone Server Project

Create a copy of server project

Enter a name for the new project, specify the project category and click Clone to copy the selected project version in Teamwork Cloud. Add a comment to represent the first version of the new project.

Name:
VCCU1

Category:
Project VCCU

Comment:

Version Tags Used Projects

☒ Clone Used Projects

Name on Server	New Name
Use Cases	Use Cases1

Less Clone Cancel Help

Cloned used projects do not include package permissions, hidden packages, and code engineering sets.

7. Click **Clone** when you are done.
8. Close the **Manage Projects** dialog.

Before using the cloned project with Teamwork Cloud web applications, [commit the newly cloned project to the server](#).

Related pages

- [Adding projects to Teamwork Cloud](#)