

# Resource Manager

## On this page

- [Working with the Resource/Plugin Manager](#)
- [Adding resources from a file](#)
- [Distributing resources using .rdzip](#)
- [Building your own custom resources file](#)

Resource Manager functionality allows you to manage local resources (installed with a modeling tool or downloaded separately) and the resources available on the server/shared repository.

With the Resource Manager, you can manage different types of resources, such as Profiles, Plugins, Templates, Language resources, Case studies /Samples, Custom diagrams, and others.

The Resource Manager functionality allows you to:

- Install the resources
- Update the resources
- Distribute needed resources internally (including the company's developed resources)
- Check dependency of a resource

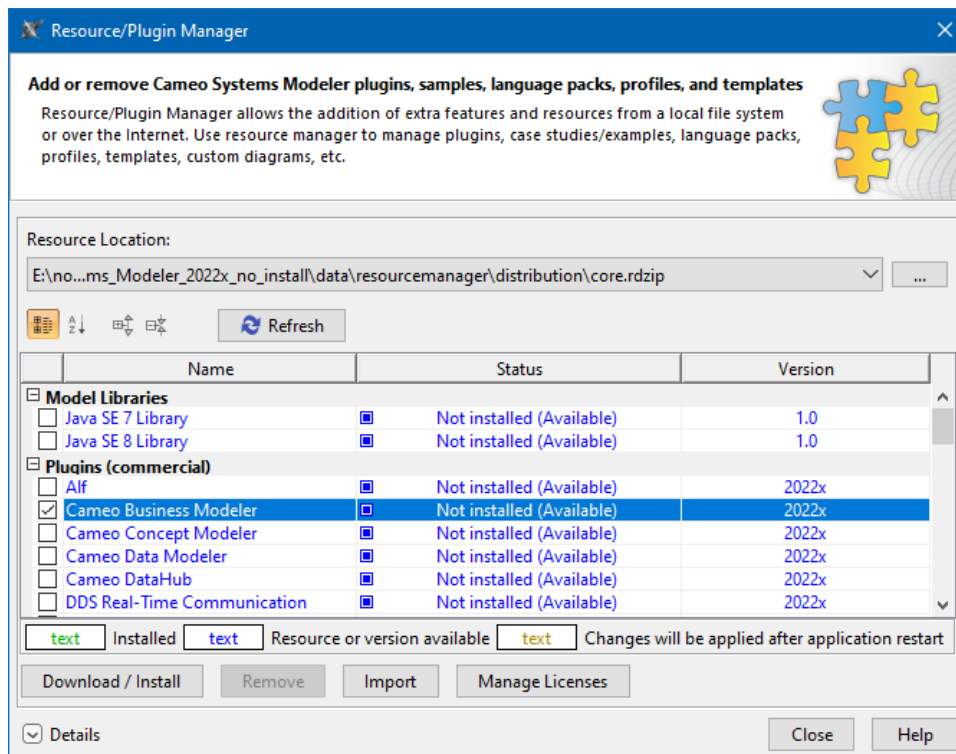
The **Resource/Plugin Manager** helps you manage the resources. You can add the resources to your modeling tool from the following locations:

- Local file system/network share
- Webserver

## Working with the Resource/Plugin Manager

To open the Resource/Plugin Manager dialog

- From the **Help** menu, select **Resource/Plugin Manager**.

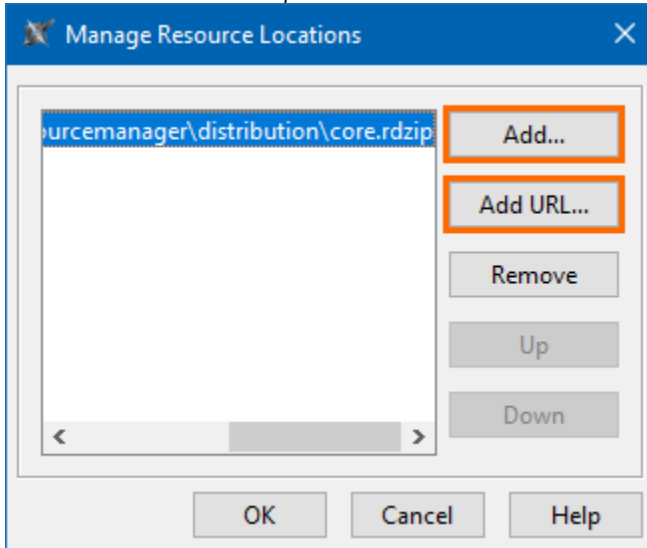


The Resource/Plugin manager dialog.

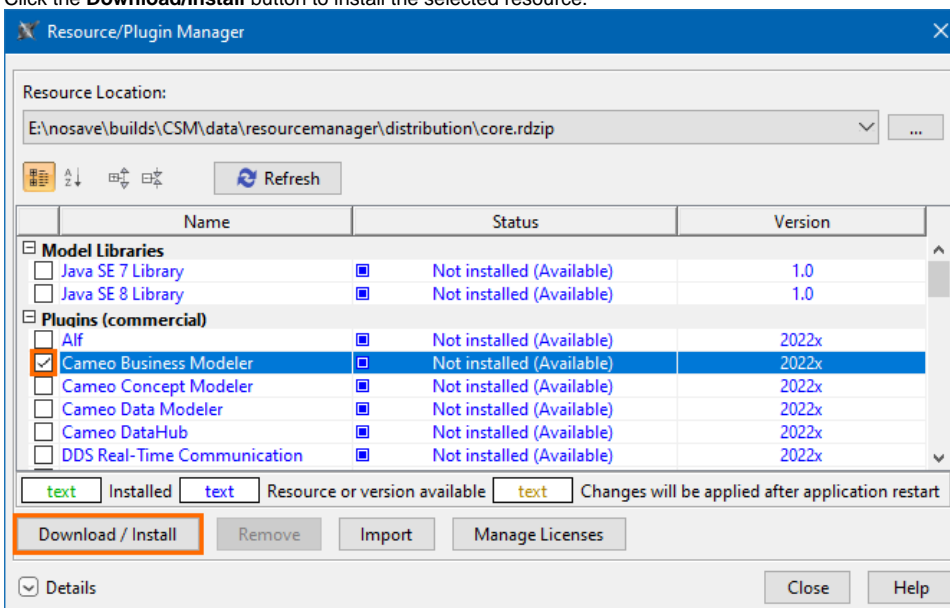
To add resources from an .rdzip file on a local file system, network share, or a web server

The **core.rdzip** file containing all available resources is added automatically to the **Resource/Plugin Manager** by default.

- In the **Resource Location** section, click the button. The **Manage Resource Locations** dialog opens. Click one of the following:
  - Add** button to add an *.rdzip* file from a local file system or network share.
  - Add URL** button to add an *.rdzip* file from a web server.



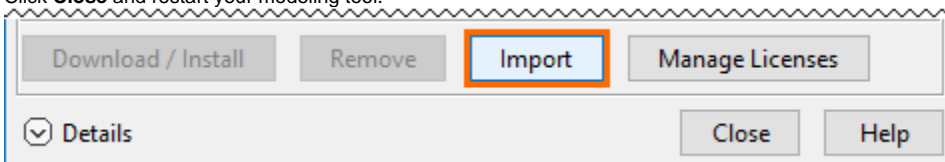
- The file selection/URL dialog opens. Specify the location/URL of the *.rdzip* file and click **Open**.
- Click **OK**. The resources of the file are loaded.
- Select the check box of the resource you want to install.
- Click the **Download/Install** button to install the selected resource.



- Click **Close** and restart your modeling tool.

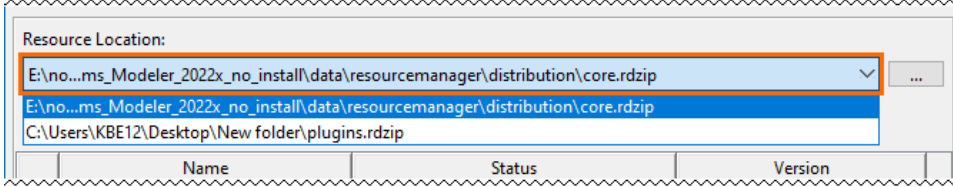
To add resources from a *.zip* file on a local file system or network share

- Click the **Import** button. The file selection dialog opens.
- Specify the location of the *.zip* file and click **Open**. The plugin is extracted and installed automatically.
- Click **Close** and restart your modeling tool.



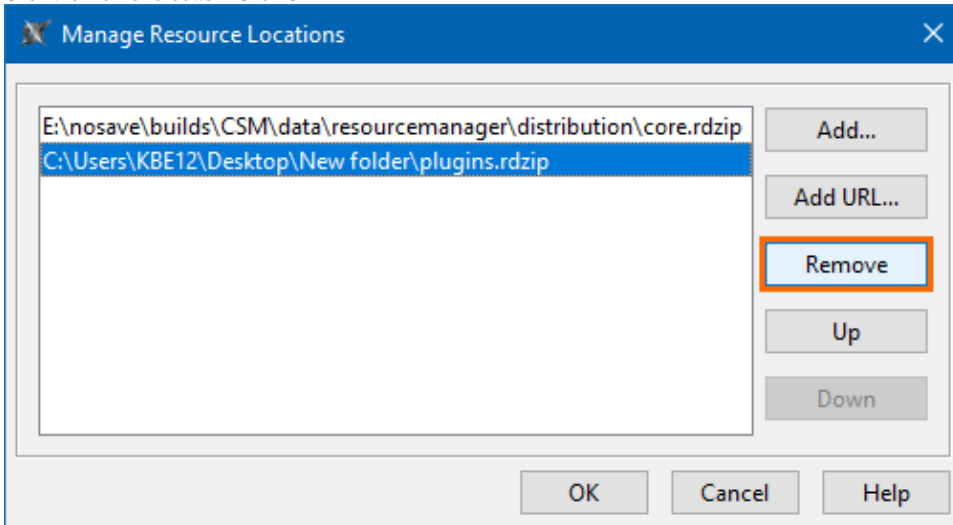
To browse added resource locations

1. In the **Resource/Plugin Manager** dialog, click on the **Resource Location** selection.
2. Select the resource location from the drop-down menu. The resources are added to the **Resource/Plugin Manager** from the added resource file.



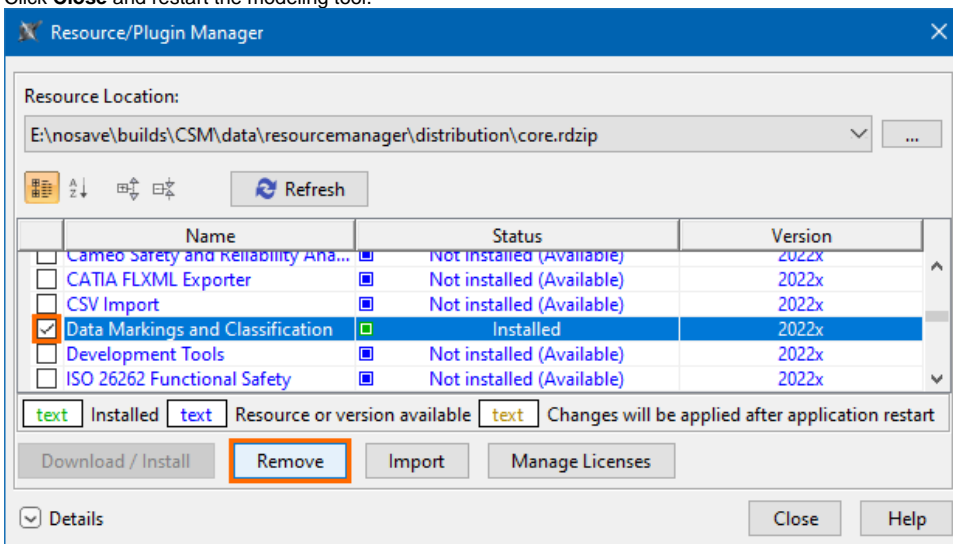
To remove a resource location

1. In the **Resource Location** section, click the button. The **Manage Resource Locations** dialog opens.
2. Select the resource location you want to remove.
3. Click the **Remove** button. Click **OK**.



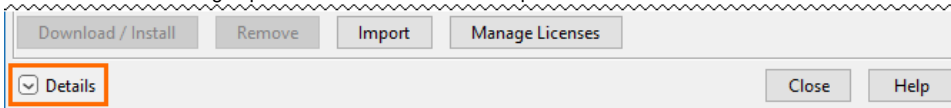
To uninstall a resource

1. Select the check box of the resource you want to uninstall.
2. Click the **Remove** button.
3. Click **Close** and restart the modeling tool.

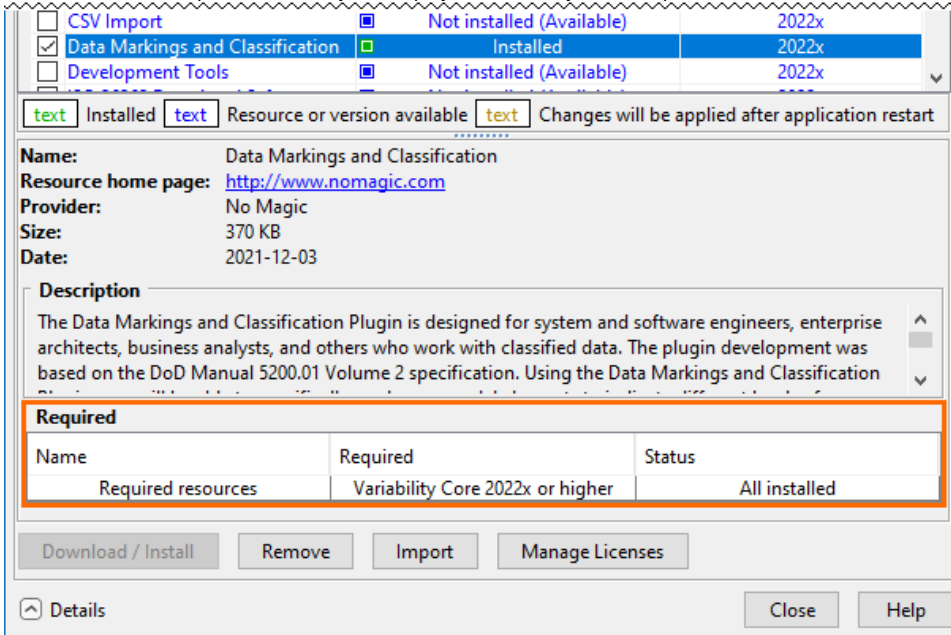


To see the resource details and/or check the dependency of a resource


1. Select the check box of the resource whose details you want to view.
2. Click **Details**. The dialog expands with the resource description at the bottom.



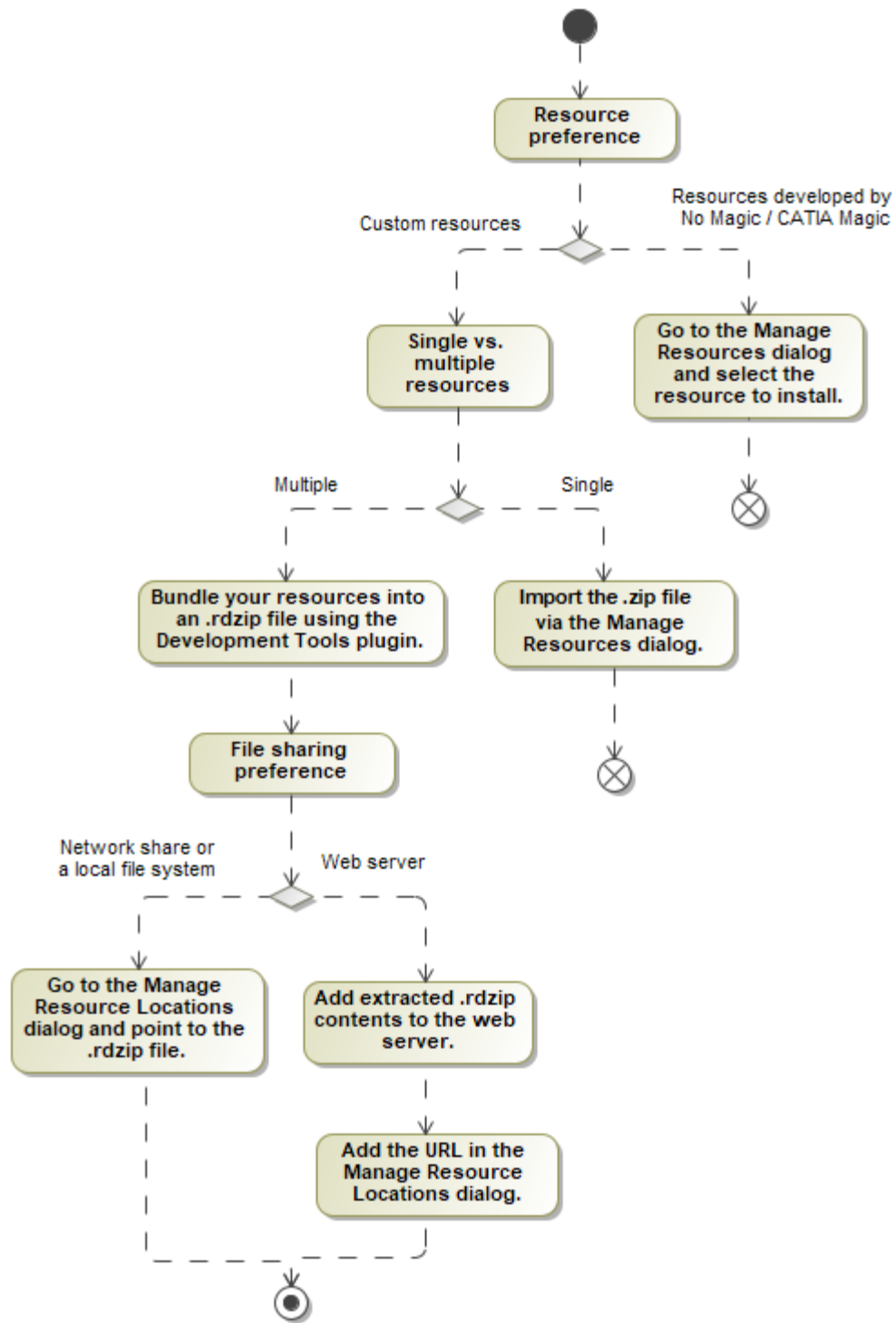
3. If the resource has dependencies, they are displayed in the **Required** compartment.



## Adding resources from a file

 The pre-bundled resource distribution file *core.rdz* is bundled with every modeling tool. It is located at `< installation_directory > / data / resourcemanager / distribution >`. The file is automatically added to the **Resource/Plugin Manager** by default.

There are multiple ways to install resources using the **Resource/Plugin Manager**, which depends on your needs and preferences. See the image below.



Visualization of the Resource/Plugin Manager workflow.

To learn more about plugin installation options, see the [Installing plugins](#) page.

## Distributing resources using **.rdzip**

Once you have the resource distribution file (**.rdzip**), you can share resources internally, e.g., on a company level.

**The** resource distribution file (**.rdzip**) contains the resources and their descriptor file. If you are using the web server for resource distribution, make sure that the resource distribution file (**.rdzip**) is extracted into the intended server location.

## Building your own custom resources file

You can bundle your resources into one *.rdzip* file and then distribute that file on a local file system, network share, or web server.

To build the resources file, you need to install the **Development Tools** plugin. The **Development Tools** plugin can be downloaded individually and then installed using **Resource/Plugin Manager**, or it can be found in the resource distribution file (*.rdzip*).



For more information about building the resource distribution file, read [Building a resource distribution file](#).

### Related pages

- [Distributing custom diagrams](#)
- [Distributing Resources](#)
- [Distributing Profiles](#)
- [Building a resource distribution file](#)