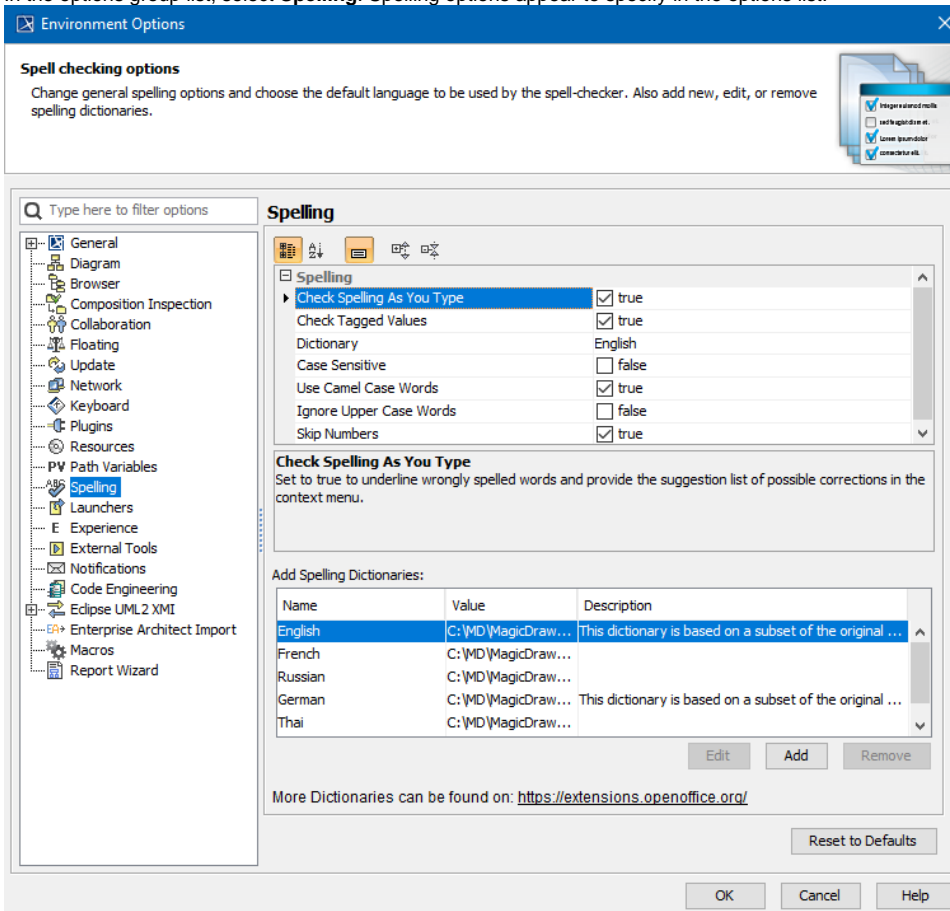


# Setting the spell checking options

In the [Environment Options](#) dialog, you can change general spelling options and the default language to be checked in the modeling tool, as well as manage dictionaries to be used in the modeling tool.

To change spell checker options

1. On the main menu, click **Options > Environment**. The **Environment Options** dialog box opens.
2. In the options group list, select **Spelling**. Spelling options appear to specify in the options list.



Spell checking options are described in the following table:

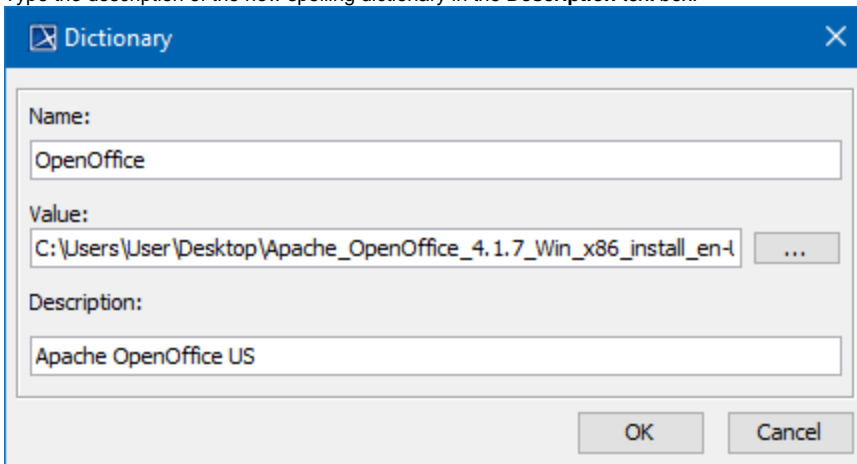
Property Name	Function
<b>Check Spelling as you type</b>	Underlines incorrectly spelled words and provides a list of suggested corrections in a shortcut menu. For more information about spell check while typing, see <a href="#">Spell Checking as you type</a> .
<b>Check Tagged Values</b>	Checks all tagged values of a string type.
<b>Dictionary</b>	Select language for spelling. All "Open Office" supportive spelling languages can be added to the existing ones. For more information about spelling dictionaries, see <a href="#">Spell checking dictionaries</a> .
<b>Case Sensitive</b>	If <i>true</i> , words will differ in meaning based on the differing use of uppercase and lowercase letters.
<b>Use Camel Case Words</b>	If <i>true</i> , compound words or phrases in which the words are joined without spaces and are capitalized within the compound, e.g. <i>BackColor</i> will be spelled as separate words.
<b>Ignore Upper Case Words</b>	If <i>true</i> , words with uppercase words only are not to be spell checked.
<b>Skip Numbers</b>	If <i>true</i> , numbers are not spell checked.

## Spell checking dictionaries

All Apache OpenOffice supportive spelling languages are available.

### To import spelling dictionaries

1. Click the **Add** button in the **Environment Options** dialog box > the **Spelling** branch > the **Add Spelling Dictionaries** group. The **Dictionary** dialog box opens.
2. Type the name of a new spelling dictionary in the **Name** text box.
3. Click the ... button and select the OpenOffice zip file location.
4. Type the description of the new spelling dictionary in the **Description** text box.



The screenshot shows the 'Dictionary' dialog box. The 'Name' field contains 'OpenOffice'. The 'Value' field contains the file path 'C:\Users\User\Desktop\Apache\_OpenOffice\_4.1.7\_Win\_x86\_install\_en-l' and a browse button '...'. The 'Description' field contains 'Apache OpenOffice US'. The 'OK' and 'Cancel' buttons are at the bottom right.



#### Dictionary Link

More dictionaries can be found at <http://wiki.services.openoffice.org/wiki/Dictionaryes>

#### Related Pages:

- [Spell Checking as you type](#)
- [Spell checking for the entire project or a selected scope](#)
- [Setting the spell checking options](#)
- [Defining properties of the customized element to be spell checked](#)