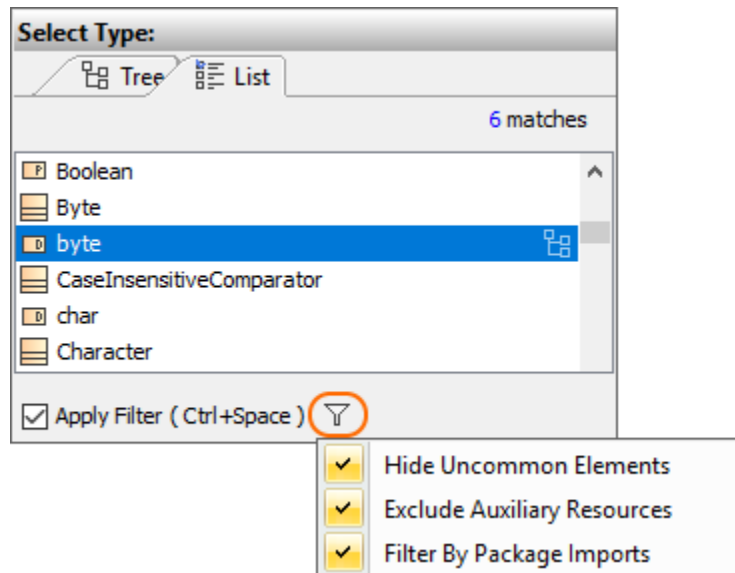


Hide Uncommon Elements filter

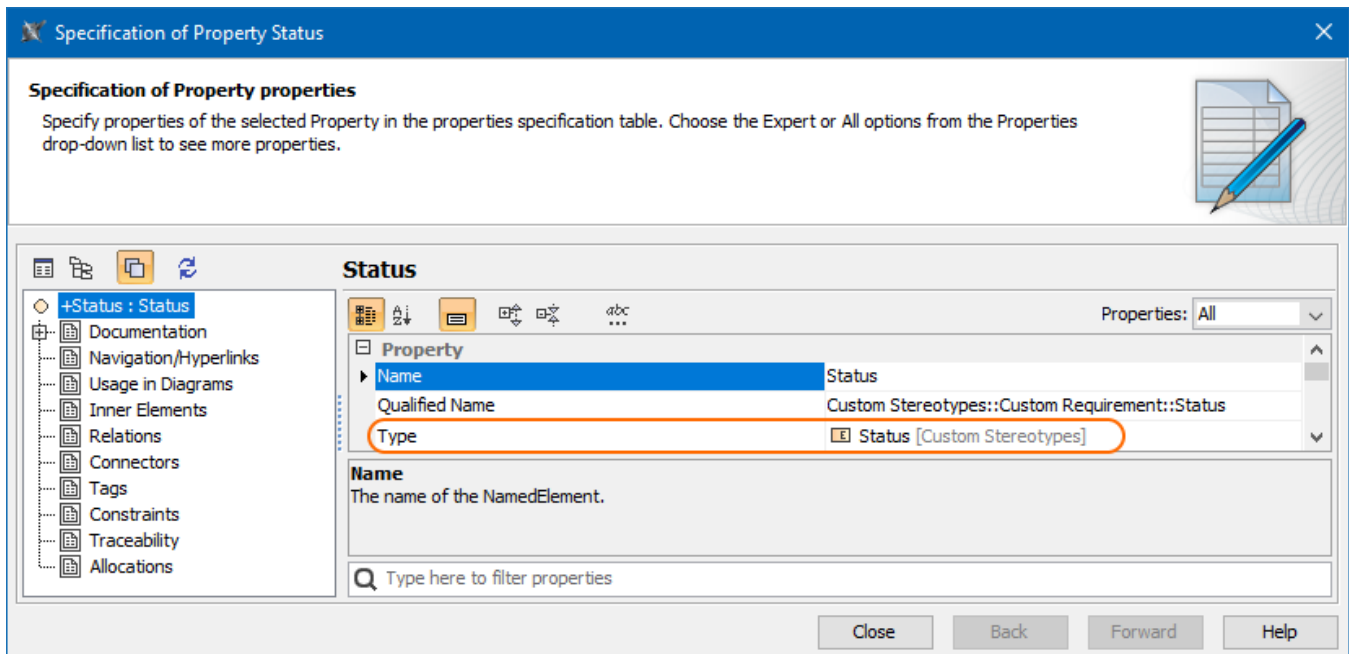
You can enable the *Hide Uncommon Elements* filter in the *Select Type* dialog to leave out uncommon element types and thus find the ones you need easier.



Hide Uncommon Elements filter in the Select Type dialog

Once *Hide Uncommon Elements* is enabled, the filter returns only those elements whose types are based on:

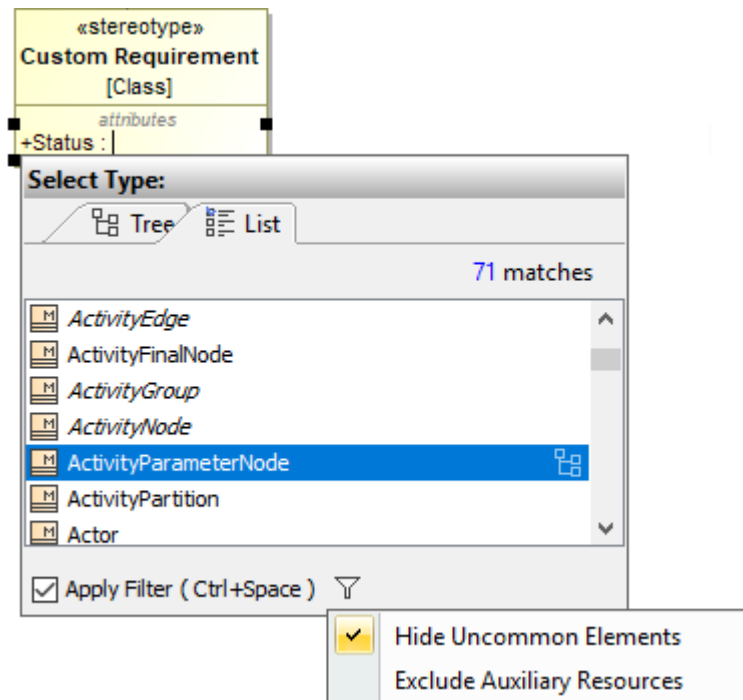
- Class (except Metaclass and Term)
- Component
- Signal
- Interface
- DataType
- Enumeration
- PrimitiveType
- AssociationClass



Specified property type

If the SysML profile is loaded, only elements of *Block* and *ValueType* types are listed in the *Select Type* dialog.

If the Stereotype tag types are being specified, metaclasses are not filtered out.



Metaclasses in the *Select Type* dialog

Related Pages:

- [Selecting port and part types](#)