
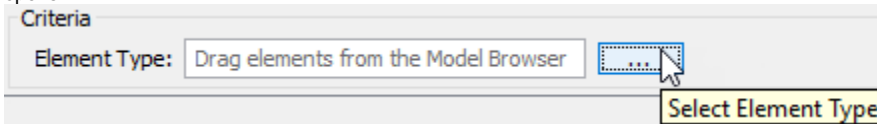



Adding or removing element types

To add or remove element types


1. In the **Criteria** area, click the  button next to the **Element Type** box. The **Select Element Type** dialog with the element and stereotype list opens.

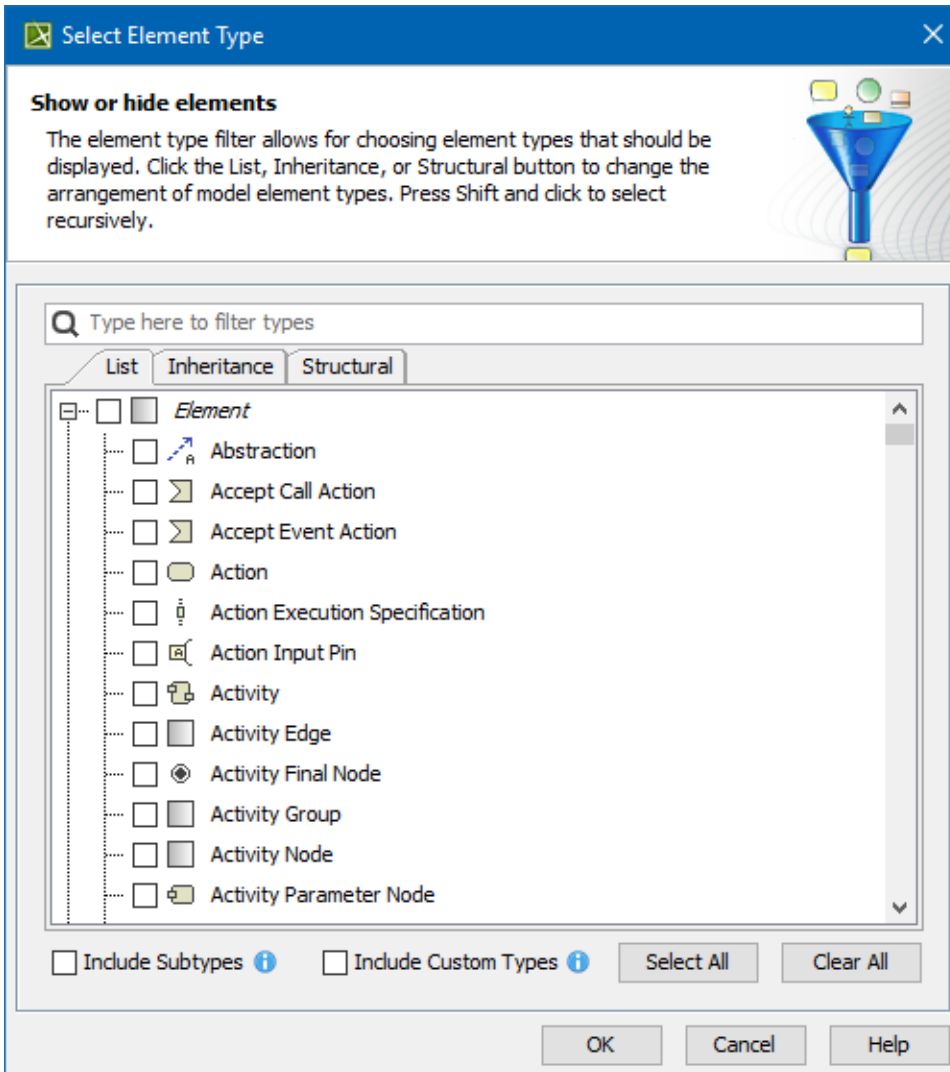


2. Do one of the following:
 - To add the element types, select the appropriate check boxes in the list.

 Properties corresponding to the selected types will be added to the list of available columns.

- To remove the element types, click to clear the appropriate check boxes in the list.

 Properties corresponding to the deselected types will be removed from the list of available columns.





- Select the **Include subtypes** check box to display the subtypes of the selected element types.
- Select the **Include Custom Types** check box to display the custom types extending the selected element types.

To add an element type, you can also drag a selected element to the **Element Type** box directly from the [Model Browser](#).

- To select *adjacent* elements, select a single element and hold down the Shift key while you click other elements.
- To select *nonadjacent* elements, select a single element and hold down the Ctrl key while you click other elements.

The new value of the **Element Type** box replaces the old value.

