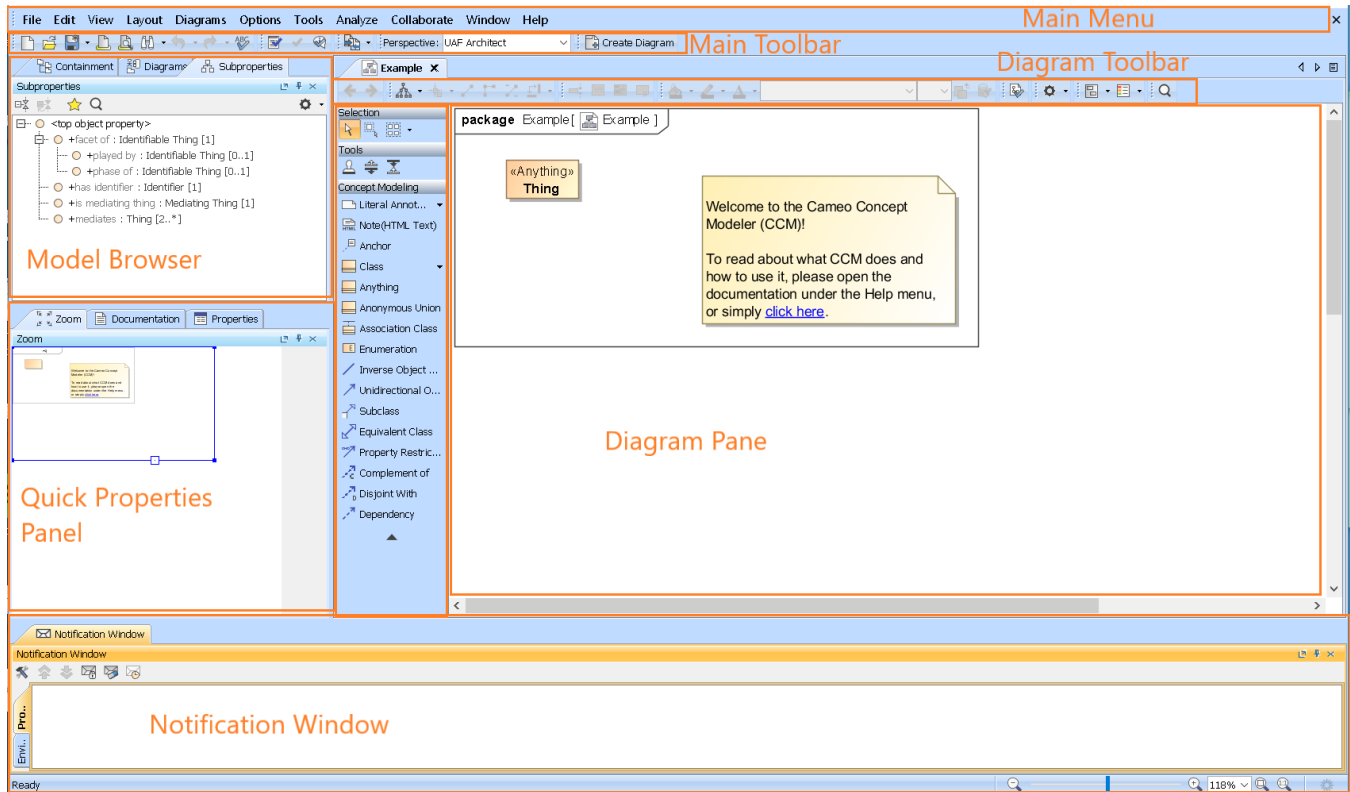


# Creating a concept modeling project

To create a concept modeling project

1. Click **File > New Project**. The **New Project** dialog will open.
2. Select **Concept Modeling Project**.
3. Name your project and select your **Project location**.
4. Click **OK**.

A new Concept Modeling diagram will open, complete with the Concept Modeling diagram palette. This diagram and its palette will also open whenever you create a new Concept Modeling diagram.



The Concept Modeling diagram.

## Containment Tree

## Subproperties

AVAILABLE FROM 19.0 SP1

You can view subproperties in the **Subproperties Tree**.

## Shortcut Keys

### Related pages

- [Usage](#)
- [Experimental Features](#)
- [Creating a concept model](#)