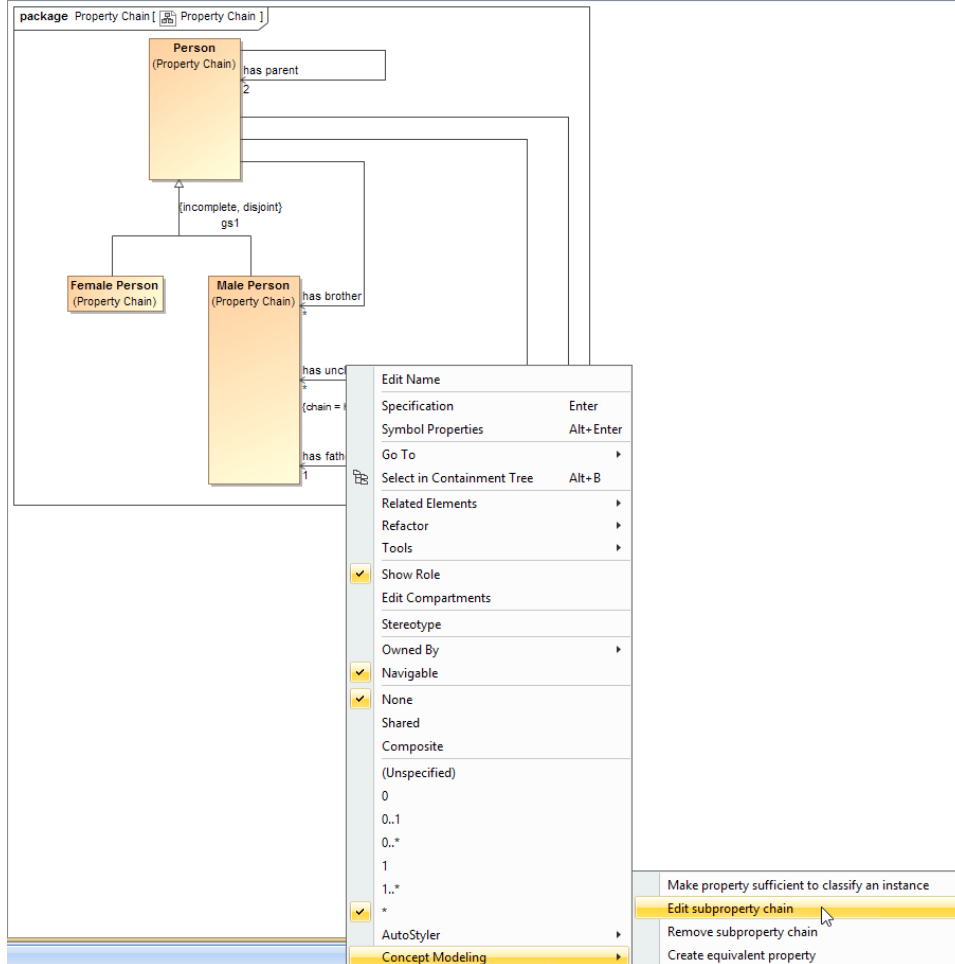


# Editing a property chain

You can use the shortcut menu option **Edit subproperty chain** to edit a property chain, and to add, remove, or reorder properties in a chain in the **Specification** window.

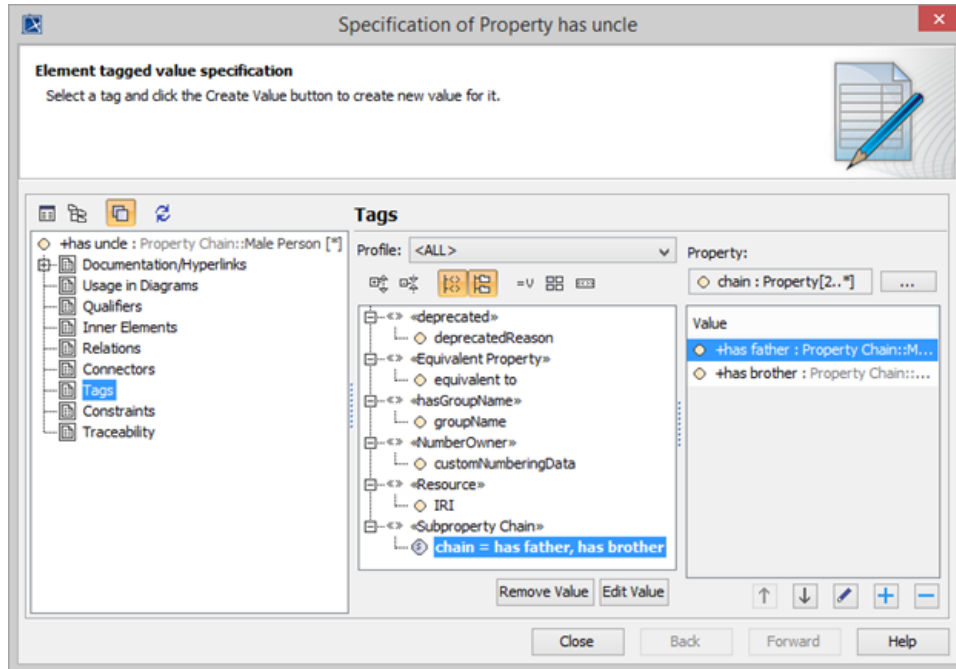
To edit a property chain

1. Right-click a property chain, e.g., `{chain = ...}` in the diagram pane.



The Edit subproperty chain shortcut menu to edit a property chain.

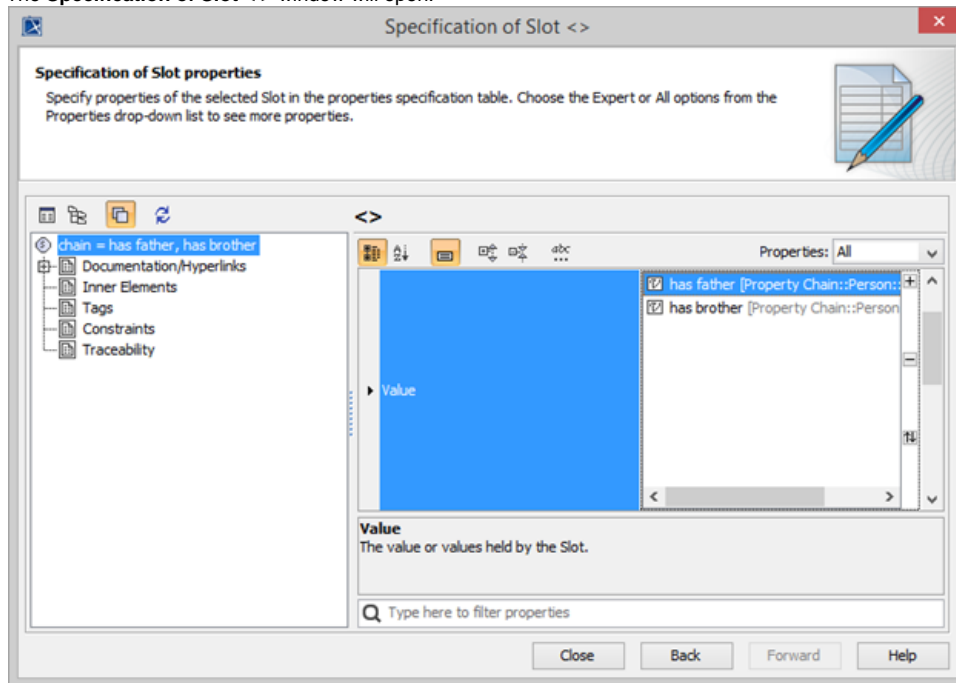
2. Select **Concept Modeling > Edit subproperty chain**. The **Specification of Property has uncle** dialog of the property will open showing the property chain, e.g., *{chain = ...}* in the **Tags** section.



The Specification window of the property "has uncle".

3. Click the tagged value, e.g., *chain = has father, has brother*.

4. Click **Edit Value**. The **Specification of Slot <>** window will open.



Editing the property chain in the Specification window.

5. Click **Value** and click the properties box next to it.
6. You can click:




to add a property to the property chain.

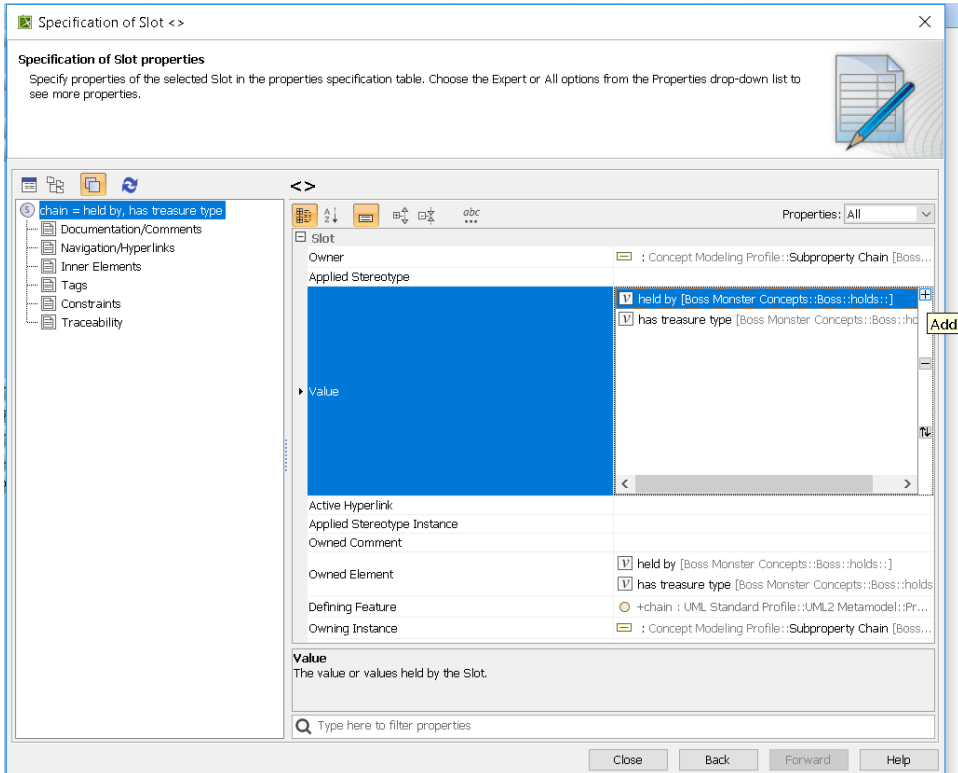


to delete a property from the property chain.

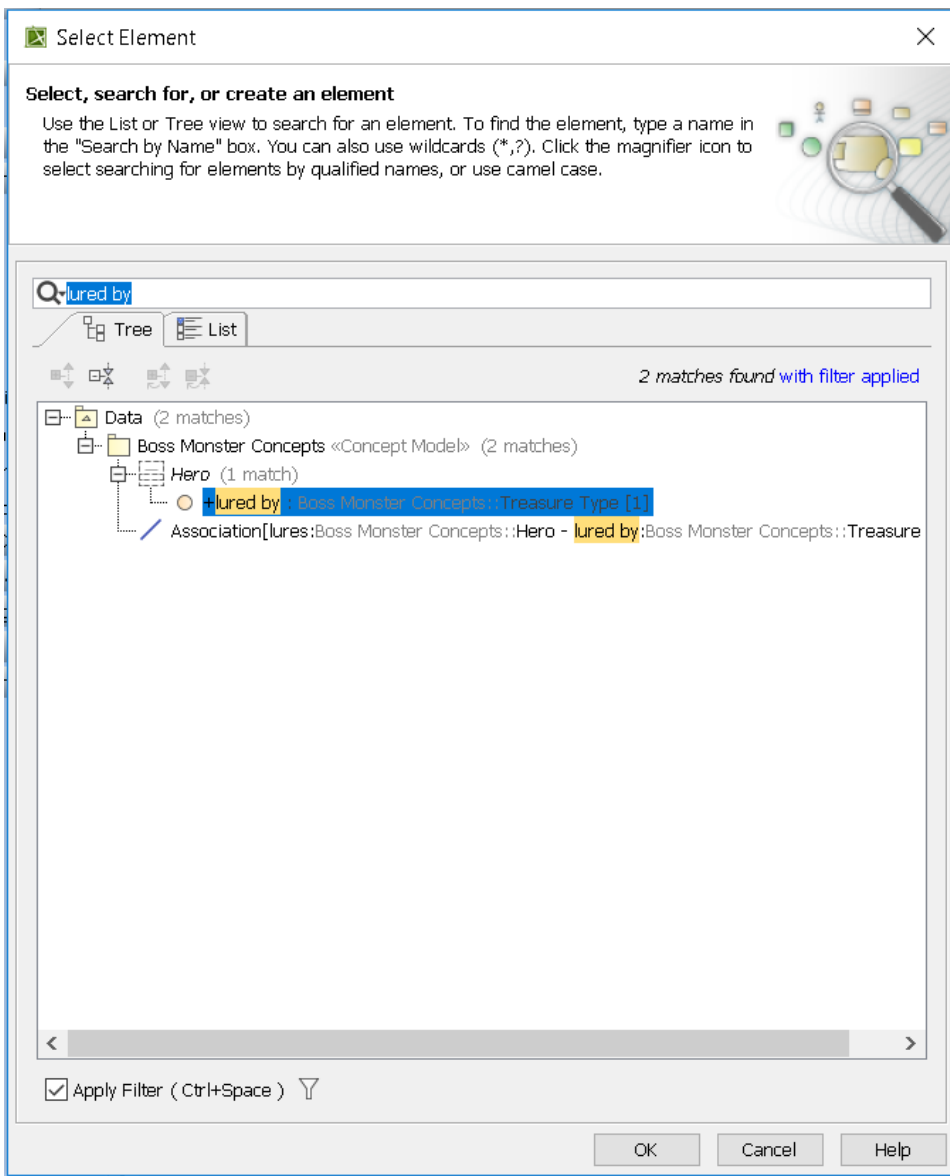


to order the properties in the property chain.

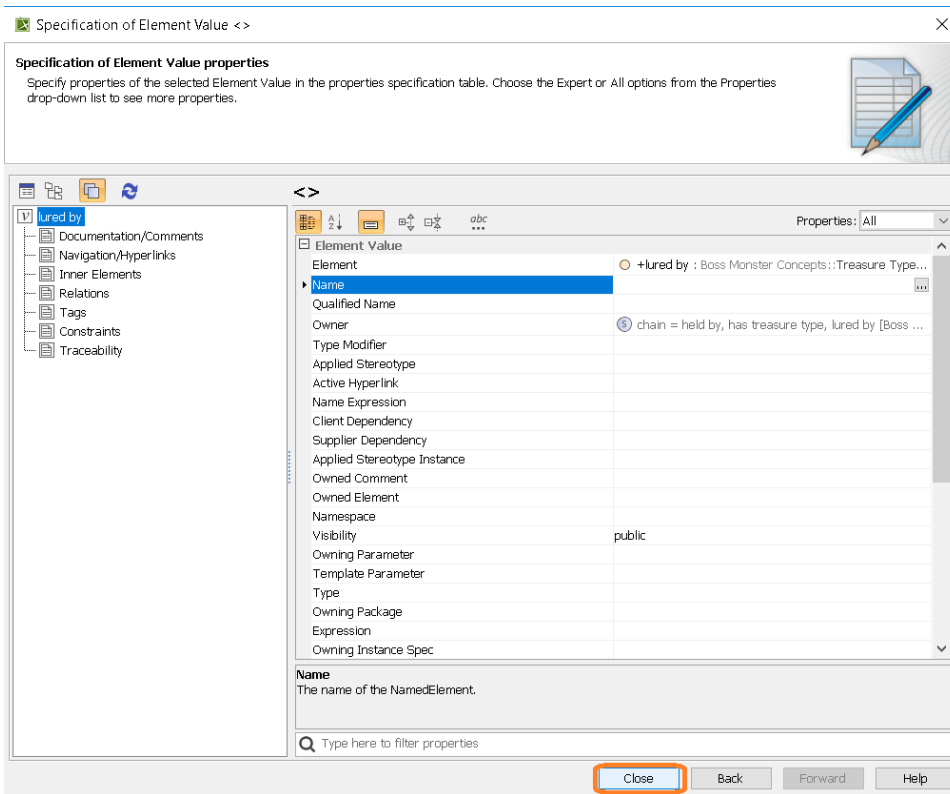
1. Click on .



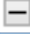
2. The Select Element dialog opens. Type the name of the property you want to add to the property chain. Click OK.

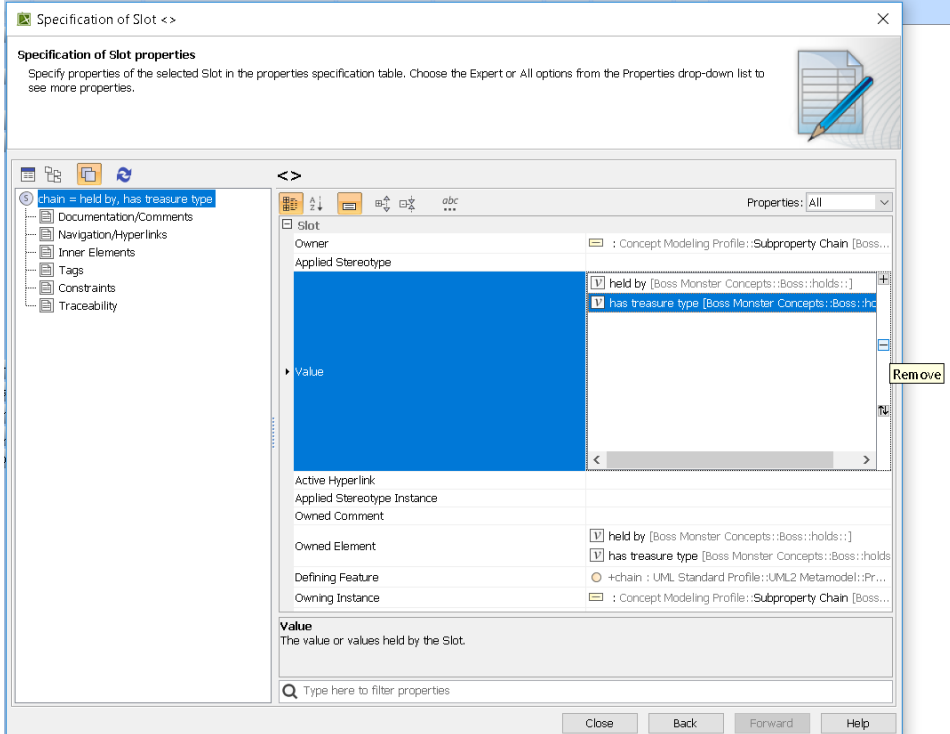


3. The Specification of Element Value <> opens. Click Close.

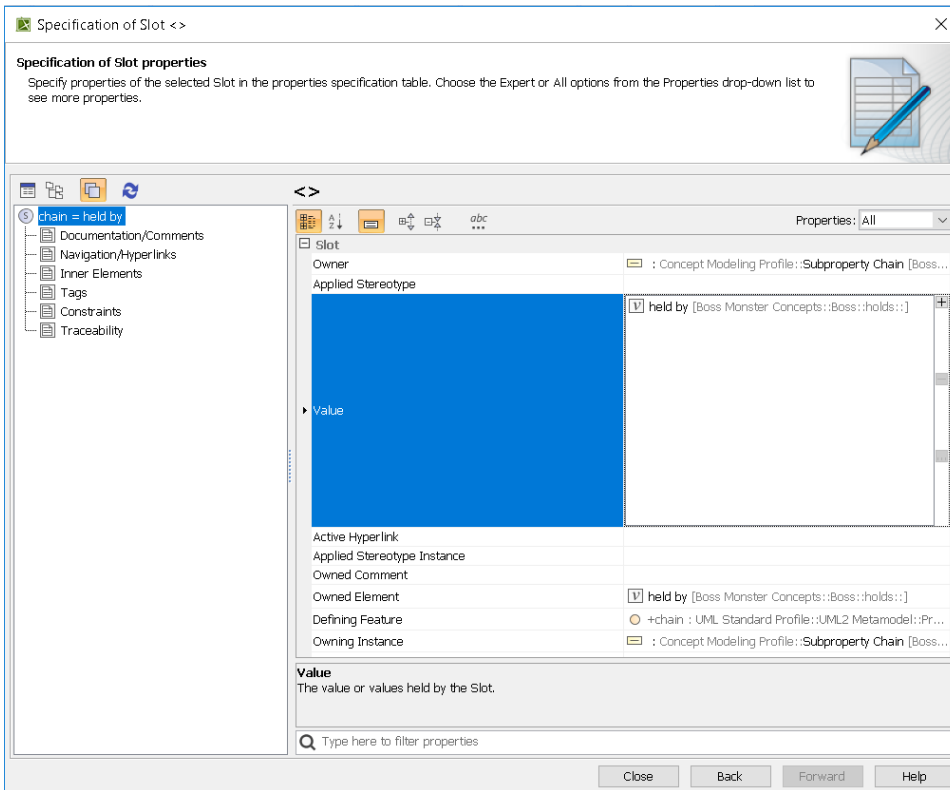


After clicking Close, you should see the new property added onto your property chain.

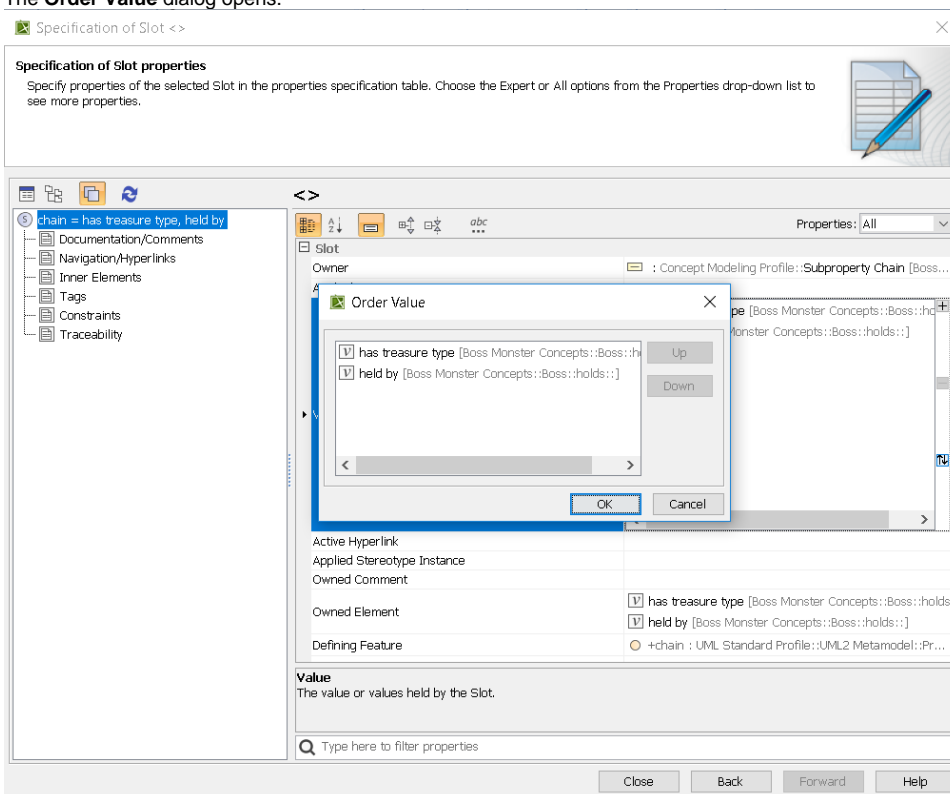
1. Click to highlight the property you would like to remove. Click .



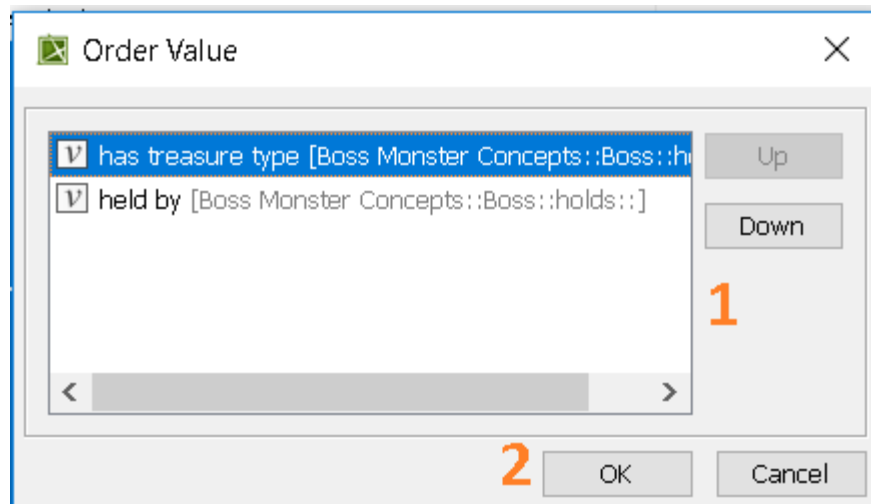
2. The property is removed from the property chain.



1. Click .
2. The **Order Value** dialog opens.



3. In the Order Value dialog, select the property you want and click either Up or Down accordingly. Click **OK**.



4. Click **Close**. The properties in the property chain have been switched.

#### Related pages

- [Usage](#)
- [Creating a concept model](#)
- [Creating a property chain](#)