

# Using installer file

## On this page

- [Post-Installation configuration](#)

Here you can learn how to start Magic Collaboration Studio using the installer file. During installation, you can choose one of the following installation options:

- **Quick Install** - intended for simple collaboration scenarios where web-based collaboration is not a daily activity. It will install Magic Collaboration Studio and all its web applications into a single machine.
- **Advanced Install** - intended for heavy-weight production use. It will allow you to choose what components to install: Teamwork Cloud Server and /or Web Application Platform (with all of the available web applications). This installation option should be used when Teamwork Cloud Server is deployed on a separate machine from Web Application Platform.

### Prerequisites

Before installing Magic Collaboration Studio, do the following:

- Make sure that your hardware and software meet the recommended system requirements.



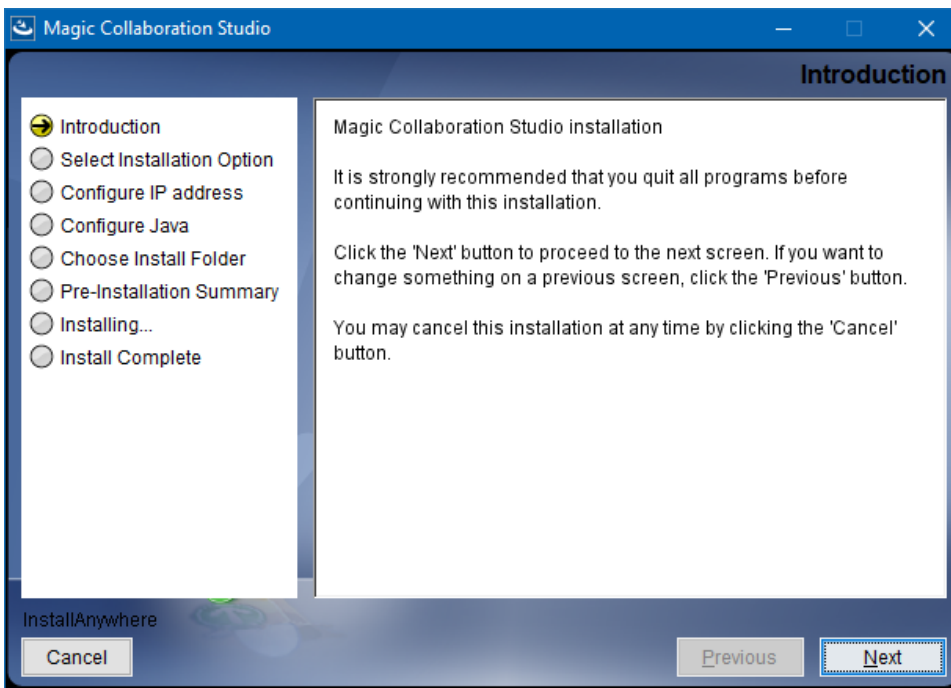
### Installation path

If the installation path contains any of the special characters, like '[', ']', '(', ')', '!', '@', '#', '\$', '%', '&', '+', '=', or ';', the installation procedure cannot be completed successfully and the login page will not load. For example, if the installation path is `C:\Program Files\TeamworkCloud`, which does not

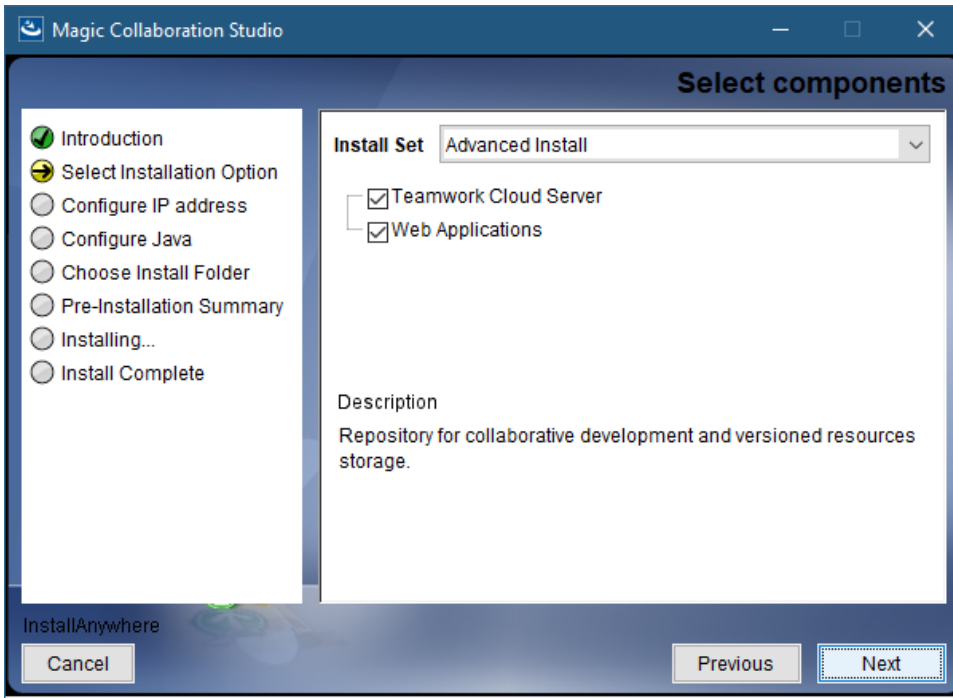
- ~~Install the FlexNet license server~~, because Magic Collaboration Studio uses the floating license.

To install Magic Collaboration Studio by using the installer file

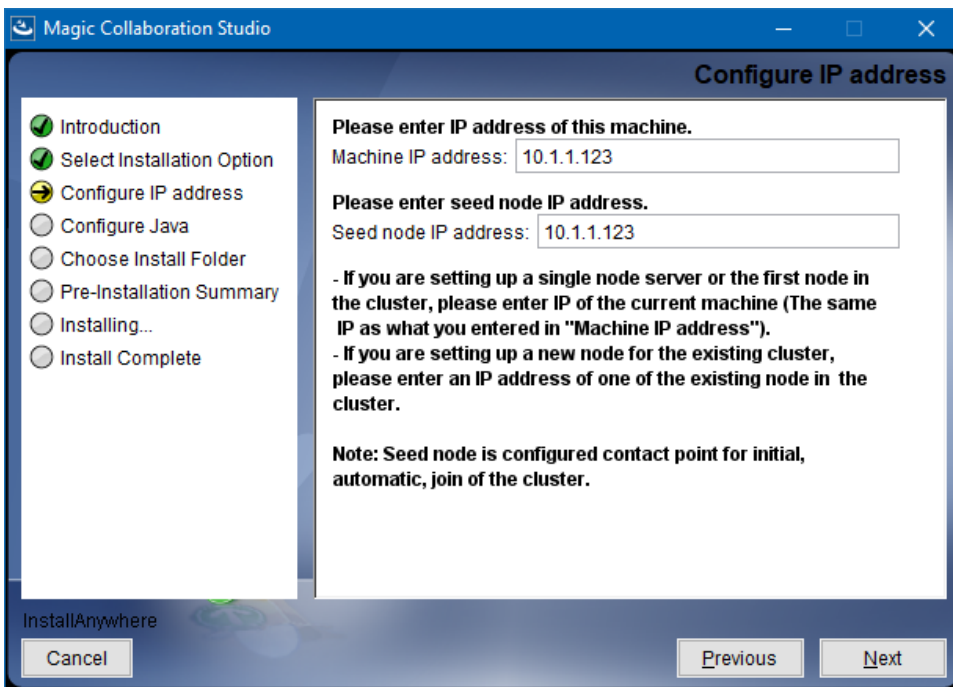
1. Right-click the `magic_collaboration_studio_<version_number>_installer_win64.exe` file and select **Run as administrator**.
2. When the installation wizard opens, click **Next**.



3. Do one of the following:
  - a. Select the **Quick install** installation option, click **Next**, and go to step 5.
  - b. Select the **Advanced Install** installation option and click **Next**.
4. Select the components you want to install and click **Next**.

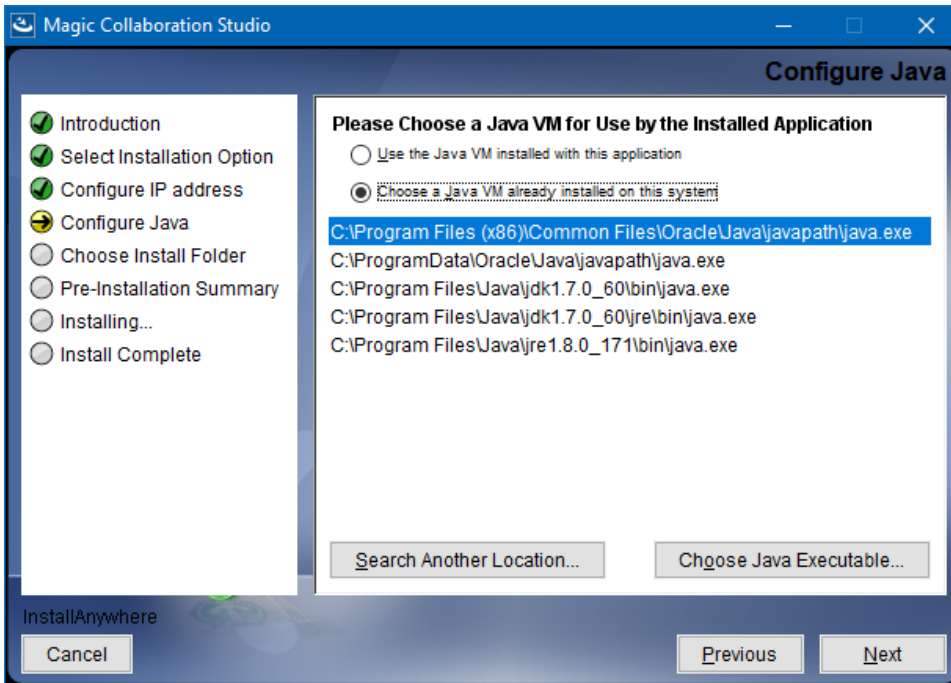


5. Configure the IP address:
- Enter the name or IP of the machine on which you want to install Magic Collaboration Studio.
  - Enter the node IP. If your machine is a single node server or the first node in a cluster, enter the IP of your machine.

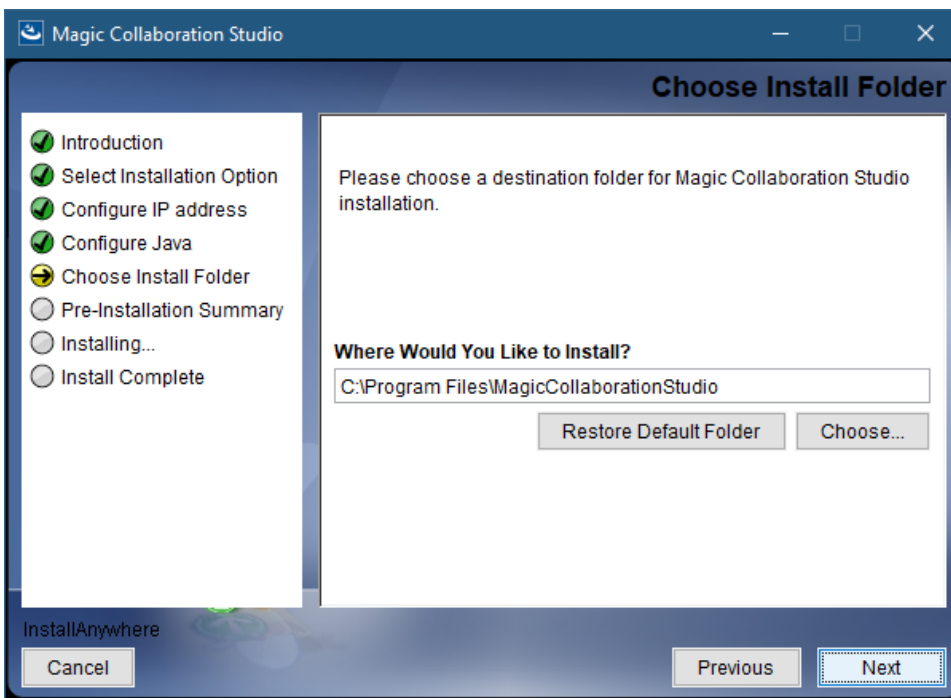


6. Click **Next**.

7. Select the Java VM installed on your machine for running Magic Collaboration Studio and click **Next**.



8. Select a location on your machine where you want to install Magic Collaboration Studio and click **Next**.



9. Check the pre-installation summary and click **Install**.  
10. Upon successful installation, click **Done** to close the installation window.  
11. Open the Task Manager and start the following services:

- TeamworkCloud service
- WebApp service

 **Zookeeper service**  
The Zookeeper service starts automatically when starting the WebApp service.

12. Check if the system is working. You should be able to access Magic Collaboration Studio via <https://FQDN:8443/webapp/>.

## Post-Installation configuration



The installer has now created the preliminary configuration. If your system is still not operational and you cannot use Magic Collaboration Studio, check the configuration parameters as described below.

1. Edit the configuration file: `C:\Program Files\MagicCollaborationStudio\configuration\application.conf`. Search for **seeds =**, located under the section for the persistence Cassandra section, and replace: **localhost** with: `ip_address_of_cassandra_node`. Search for **url =**, located in the **esi.auth** section. Enter the IP address or FQDN (if accessing via FQDN) of your server.
2. If you are accessing TWCloud Admin via its FQDN, edit the configuration file: `C:\Program Files\MagicCollaborationStudio\AuthServer\config\authserver.properties`. Search for **server.public.host** and replace the IP address with the FQDN. Search for `authentication.redirect.uri.whitelist`, and append the following to the entry, <https://FQDN:8443/webapp/>
3. Please create a an entry in `C:\Windows\System32\drivers\etc\hosts` containing the local IP address and the FQDN of your machine, if accessing via FQDN. For example, if your IP address is `10.1.1.123` and your FQDN is `mymachine.mydomain.local`, it would be in this form:  
`10.1.1.123 mymachine.mydomain.local`
4. Open an administrative command prompt and issue the following commands in order to create service dependencies:

```
sc config authserver depend= teamworkcloud
```

```
sc config webapp depend= teamworkcloud
```

5. Open the Task Manager and restart the `authserver`, `teamworkcloud`, and `webapp` services.
6. In your web browser, go to <https://localhost:8443/webapp> (if default options are used) to open Magic Collaboration Studio.