

Operational Processes

Description

The Operational Processes (Op-Pr) view concerns capturing activity based behavior and flows. It describes the activities that are normally conducted in the course of achieving business goals that support a capability. It describes operational activities, their inputs/outputs, operational activity actions and flows between them.

The intended usage of the Operational Processes (Op-Pr) view includes:

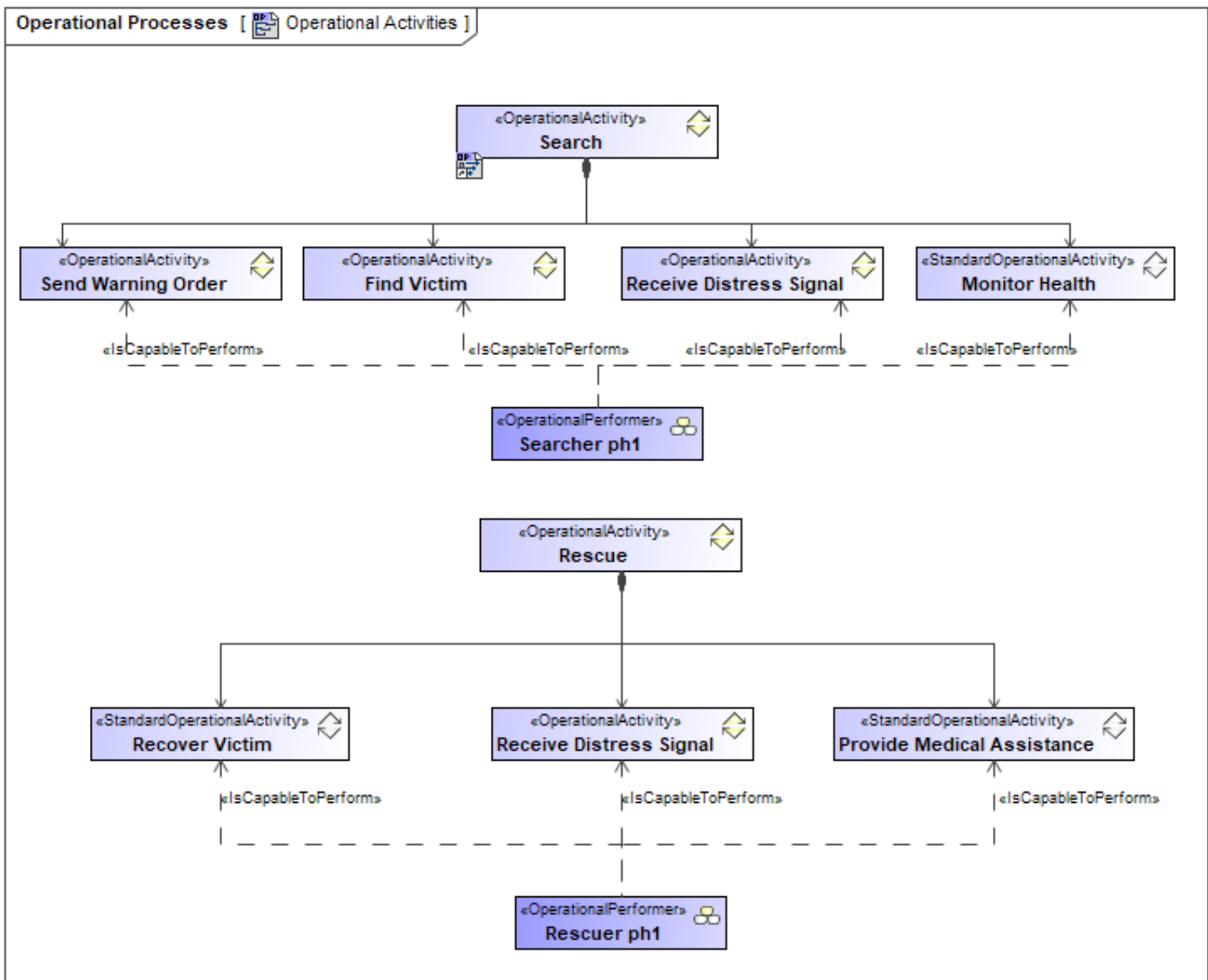
- Description of activities and workflows.
- Requirements capture.
- Definition of roles and responsibilities.
- Support task analysis to determine training needs.
- Problem space definition.
- Operational planning.
- Logistic support analysis.
- Information flow analysis.

Implementation

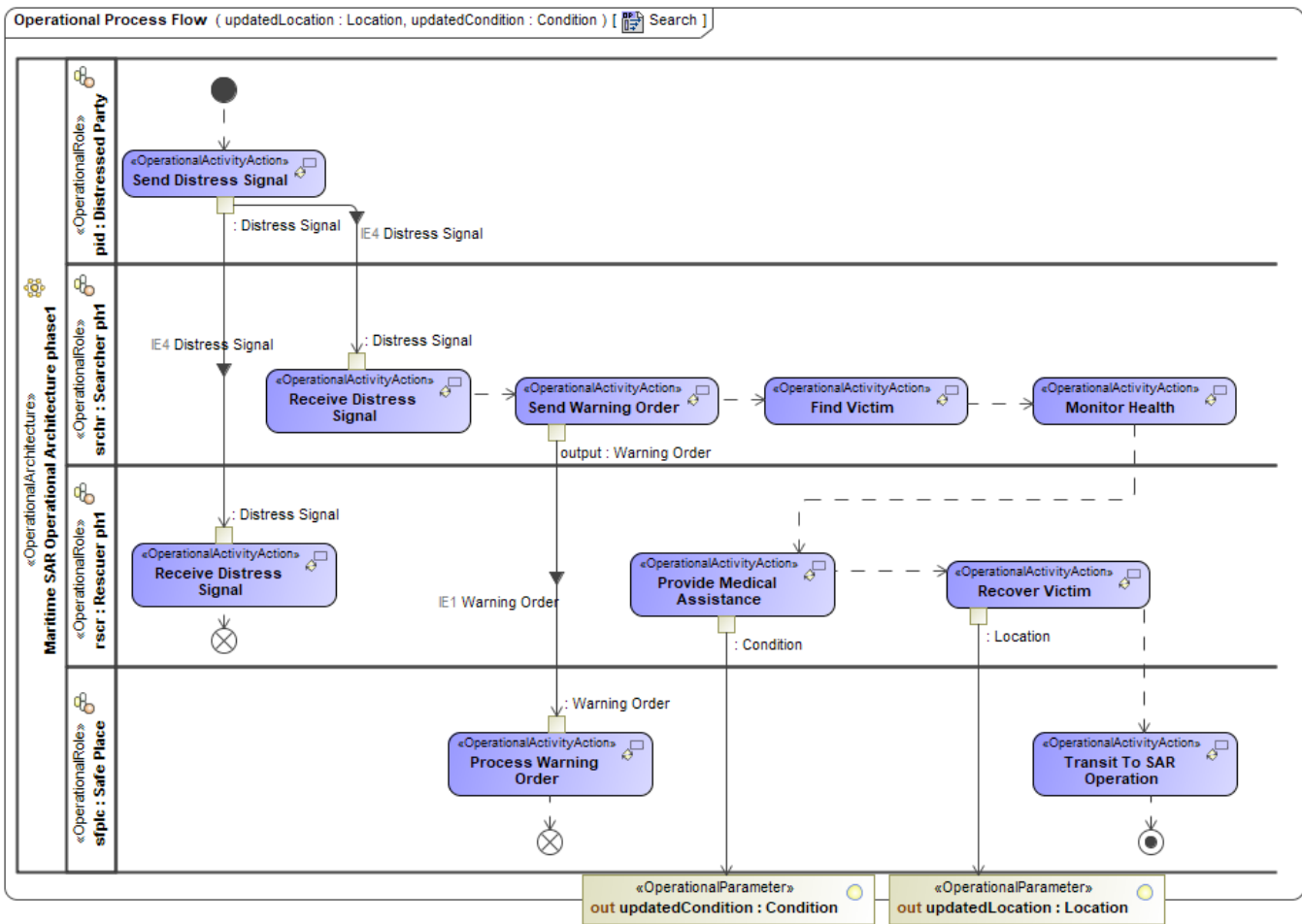
The Operational Processes (Op-Pr) view is represented using:

- [Operational Processes diagram](#). It represents Operational Activity hierarchies.
- [Operational Process Flow diagram](#). It represents Operational Activity flows.
- Operational Process Flow (BPD) diagram. It is based on BPMN Process Diagram (BPD) and describes a sequence or flow of activities in an organization that shows how the business work. The diagram shows activities, events, and data that trigger or feed business activities. An Operational Process Flow (BPD) diagram is similar to the BPMN Process Diagram (BPD).

Sample



An example of the operational process



An example of the operational process flow

Related elements

- [Activity](#)
- [Activity Performable Under Condition](#)
- [Actual Enduring Task](#)
- [Actual Measurement Set](#)
- [Actual Service](#)
- [Condition](#)
- [Implements](#)
- [Is Capable To Perform](#)
- [Measurable Element](#)
- [Operational Activity](#)
- [Operational Activity Edge](#)
- [Operational Agent](#)
- [Operational Method](#)
- [Operational Parameter](#)
- [Operational Performer](#)
- [Operational Activity Action](#)
- [Operational Exchange](#)
- [Operational Exchange Item](#)
- [Operational Role](#)
- [Performs In Context](#)
- [Required Service Level](#)
- [Service](#)
- [Standard Operational Activity](#)

Related procedures

- [Working with Operational Processes diagram](#)
- [Working with Operational Process Flow diagram](#)
- [Creating Process Flow Diagrams From Compositions or Aggregations Defined in Process Diagrams](#)