

Working with Operational Process Flow diagram

Before creating this diagram, the [Operational Process diagram](#) must be created first.

To create an Operational Process Flow diagram for Operational Activity flows

1. Do one of the following:
 - In the diagram palette, click the Swimlanes and then click the diagram pane. The **Select Swimlane Representatives** dialog opens. In the dialog, you can choose the Operational Performer or Operational Role to be represented by the swimlane.

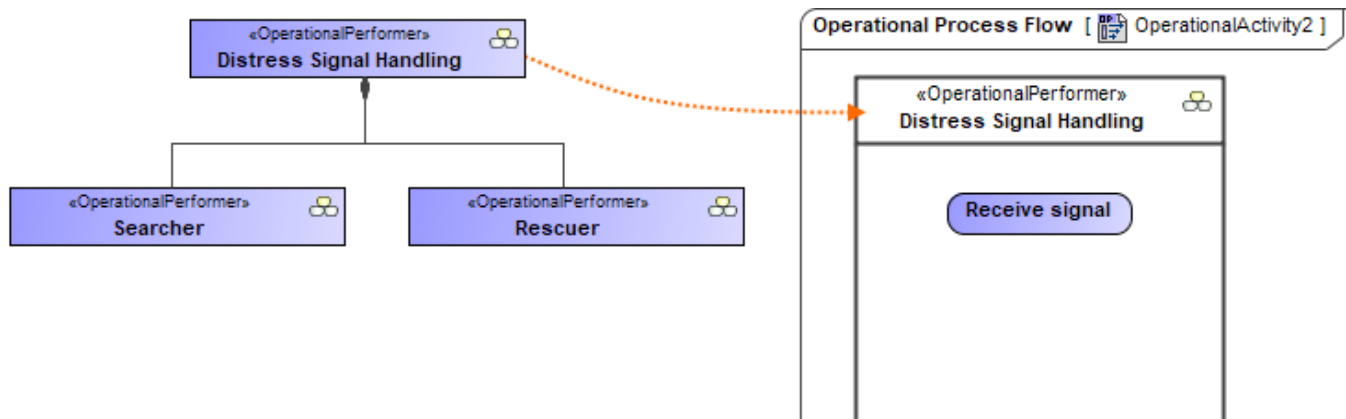
If you click Cancel in the dialog, the empty Swimlanes will be created.

- Drag the Operational Agent from the Containment tree directly to the diagram pane to create the Swimlane.
2. Create Operational Activity Actions or just drop Operational Activities from the Containment tree directly to the diagram pane.
 3. Connect Operational Activity Actions with Operational Control Flow or Operational Object Flow.
 4. Display the possible Operational Exchanges on Operational Control Flow or Operational Object Flow.

Creating the inner Process Flow diagrams

Before creating the inner Process Flow diagram, the Process diagram should be created and the resource structure should be defined there.

Let's say, you have a defined structure and create the Operational Process Flow diagram with the top element - *Distress Signal Handling* as a Swimlane representative.

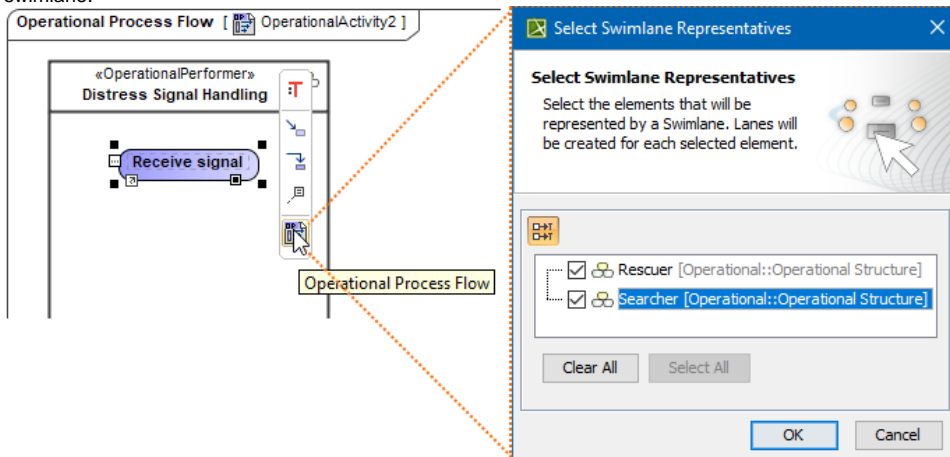


The Operational Process Flow diagram is created. In the Swimlane, you can add either Operational Activity Action or Operational Action. In both cases, you can create an inner Operational Process Flow diagram for an Operational Activity Action or Operational Action Smart Manipulator toolbar.

To create an Operational Process Flow diagram from Smart Manipulator of an Operational Activity Action or Operational Action

1. In the Swimlane, select a needed Operational Activity Action or Operational Action.
2. In the Smart Manipulator toolbar, click Operational Process Flow.

3. The **Select Swimlane Representatives** dialog opens. In the dialog, you can choose the Operational Performer to be represented by the swimlane.



- The **Select Swimlane Representatives** dialog is displayed only when you have a resource structure defined in the Process diagram.
- If you click **Cancel**, the empty diagram will be created.

4. Click **OK**.

A new Operational Process Flow diagram is created with a Swimlane and the selected performers as the representatives.

When the Operational Activity Action is created in the Swimlane, the `IsCapableToPerform` relationship is created between the Operational Performer and Operational Activity (the behavior of the Operational Action). Furthermore, if the Operational Role is assigned to the Swimlane, the `PerformInContext` relationship is created between the role and Operational Activity Action.

Related pages

- [Swimlane](#)