

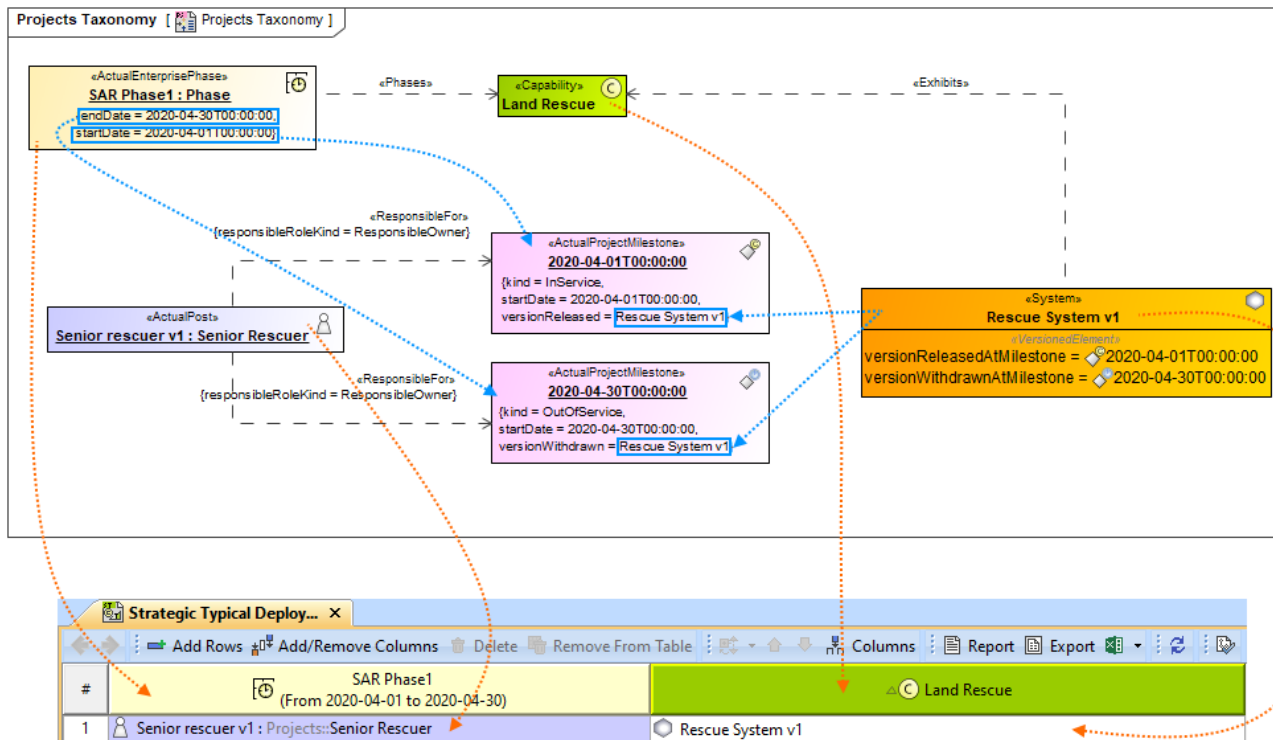
Working with Strategic Typical Deployment diagram

On this page

- [Creating Strategic Typical Deployment table](#)
 - [Create a Strategic Typical Deployment table](#)
 - [Add Actual Organizational Resources as rows in the table](#)
 - [Add Capabilities as columns in the table](#)
 - [Add Resources in table cells as content in the table](#)
- [Removing Capabilities from a Strategic Typical Deployment table](#)
- [Removing Resources from a Strategic Typical Deployment table](#)
- [Removing rows from the table](#)
- [Generating a report](#)

Creating Strategic Typical Deployment table

The context of the Strategic Typical Deployment table is the Actual Enterprise phase. The Actual Enterprise Phase can have Start and End dates defined. Those dates can be reused for deploying Resources. The Enterprise Phase element is related to the [Strategic Structure](#) view.

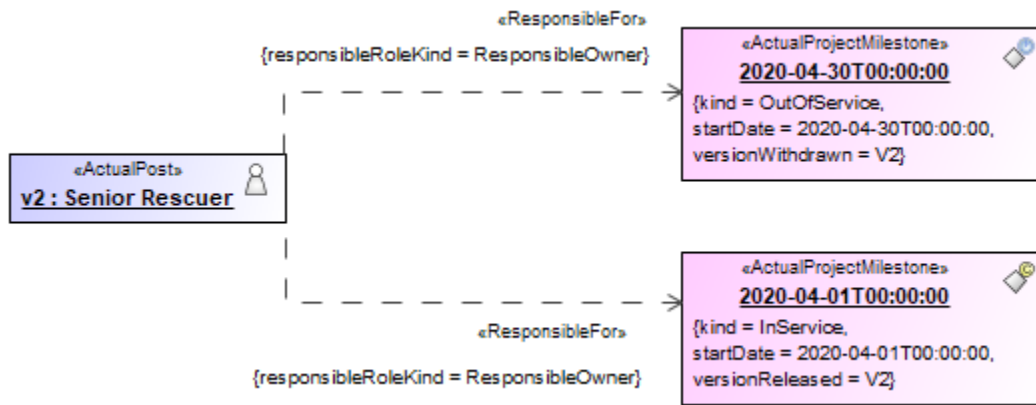


The content of the Strategic Typical Deployment table are Resources used by Actual Responsible Resources (Actual Organizations, Actual Posts, and Actual Persons) to realize Capabilities in a particular time period of the enterprise. The rows of the Strategic Typical Deployment table are Actual Responsible Resources, and the columns are Capabilities.

Actual Enterprise Phase and Capability are related using the **Phases** relationship when the Capability is added as a table column.

Resources are related to Capabilities using the **Exhibits** relationship when the table cell is filled.

Deploy the Resources that are necessary for the Actual Responsible Resource to accomplish the selected Capability. Actual Responsible Resources are related to Actual Project Milestones (In Service and Out Of Service) using the **Responsible For** relationship. Resources are set as the versionReleased for In Service Milestone and versionWithdrawn for Out of Service Milestone.



The **Responsible For** relationship is created in the model when the table cell is filled with Resources.

There can be one or more Resources related to the Actual Organizational Resource. The VersionReleased Milestone defines the time when the Resource is started to use. The VersionWithdrawn Milestone defines the time when the Resource is no longer used. We recommend using the timeframe from the Actual Enterprise Phase.


To work with the Strategic Typical Deployment table

1. [Create a Strategic Typical Deployment table.](#)
2. [Add Actual Organizational Resources as rows in the table.](#)
3. [Add Capabilities as columns in the table.](#)
4. [Add Resources in table cells as content in the table.](#)

Create a Strategic Typical Deployment table

To create an empty Strategic Typical Deployment table

1. Do one of the following:
 - Right-click a Strategic Roadmap package as the diagram owner and select **Create Diagram > Strategic Typical Deployment.**
 - Right-click an Actual Enterprise Phase and select **Create Diagram > Strategic Typical Deployment.**
2. The [Actual Resources Deployment Creation Wizard](#) opens. Follow the steps of the wizard.

 You can click Finish in the first step of the [Actual Resources Deployment Creation Wizard](#). Then an empty table is created and you will need to add rows and columns manually.

Add Actual Organizational Resources as rows in the table

To add Actual Organizational Resources as rows in the table

1. Click the **Add Rows** button.
2. In the **Select Actual Organizational Resources** dialog, choose Actual Organizational Resources.
3. Click **OK** when you are done.

Add Capabilities as columns in the table

To add Capabilities as table columns

1. Click the **Add/ Remove Columns** button.
2. In the **Select Capabilities** dialog, choose Capabilities.
3. Click **OK** when you are done.

 **Phases** relationship between the context element (Actual Enterprise Phase) and an added Capability is added in the model.

Add Resources in table cells as content in the table

To add Resources in table cells as content in the table

1. Click the cell wherein you want to add a Resource.
2. Click the **+** button that appears at the right of the selected cell.
3. In the **Typical Resources Deployment Wizard**, select Resources and specify In Service and Out Of Service dates for them.
4. Click **Finish** when you are done.



- a. The Exhibits relationship is created between Resource and Capability.
- b. The Actual Project Milestones are created. If the milestone with the same chosen dates already exists, it is reused.
- c. versionReleased and versionWithdrawn tags are filled.
- d. Responsible For relationship is created between Actual Resource and milestones.

Removing Capabilities from a Strategic Typical Deployment table

To remove Capabilities from a Strategic Typical Deployment table

1. In the table toolbar, click the **Add/ Remove Columns** button.
2. In the **Select Capability** dialog, choose Capabilities to remove them from a table.
3. Click **OK** when you are done.



- Capabilities are removed only from the table. They are not removed from the model.
- An **Exhibits** relationship between the context element and a removed Capability is removed from the model.
- If you have more Strategic Typical Deployment tables where the same Actual Enterprise Phase and Capability are used, then

To hide Capabilities in a Strategic Typical Deployment table, the Capability is removed from other diagrams as well.

1. In the table toolbar, click **Columns**.
2. In the open menu, click the Capabilities you want to hide.

Removing Resources from a Strategic Typical Deployment table

To remove the deployment of the Resources from a Strategic Typical Deployment table

1. Double-click the cell you want to edit.
2. Select a Resource and click the **-** button.



The Resource is no longer deployed for the particular Actual Responsible Resource, but it is not removed from the model.

Removing rows from the table

To remove a row from the table

1. Select a row you want to remove.
2. In the table toolbar, click Remove From Table.



The row is only hidden from the table. The deployment is not removed.

Generating a report

There is a predefined report for the Strategic Typical Deployment table.

To generate the report

1. In the table toolbar, click **Report**.
2. Select the location and type the name for the report file.
3. Click **Generate**.

Related pages

- [Typical Resources Deployment Wizard](#)