

Working with Resources Processes Flow diagram

Before creating the Resources Processes Flow diagram, the [Resources Processes diagram](#) should be created first.

Creating Resources Processes Flow diagram

To create a Resource Process Flow diagram for Function Action flows

1. Do one of the following:
 - In the diagram palette, click the Swimlanes and then click the diagram pane. The **Select Swimlane Representatives** dialog opens. In the dialog, you can choose the Resource Performer to be represented by the swimlane.

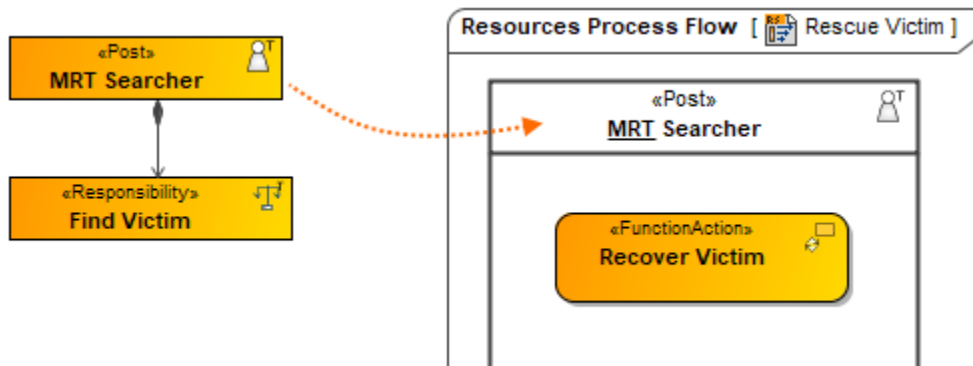
If you click **Cancel** in the dialog, the empty Swimlanes will be created.

- Drag the Resource Performer from the Containment tree directly to the diagram pane to create the Swimlane.
2. Create Function Action or just drop them from the Containment tree directly to the diagram pane.
 3. Connect Function Action with Function Control Flow or Function Object Flow.
 4. Display the possible Resource Exchanges on Function Control Flow or Function Object Flow.

Creating the inner Process Flow diagrams

Before creating the inner Process Flow diagram, the Process diagram should be created and the resource structure should be defined there.

Let's say, you have a defined structure and create the Resource Process Flow diagram with the top element - *MRT Searcher* as a Swimlane representative.

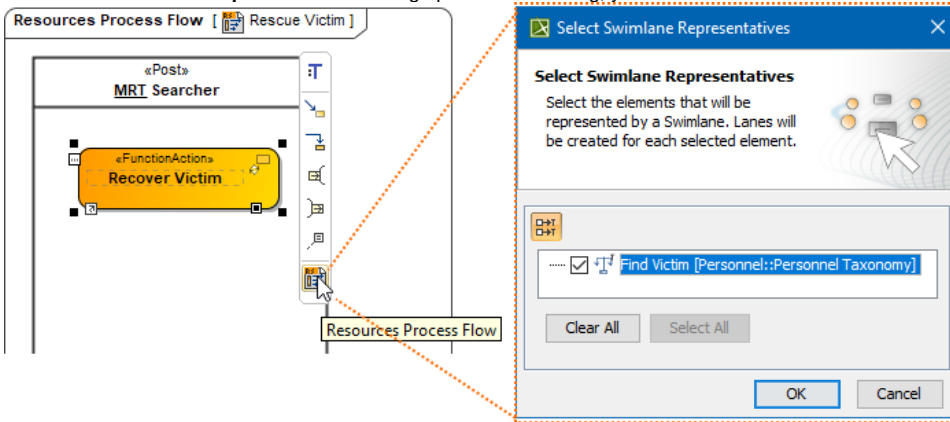


The Resource Process Flow diagram is created. In the Swimlane, you can add either Function Action or Resource Action. In both cases, you can create an inner Resource Process Flow diagram for a Function Action or Resource Action Smart Manipulator toolbar.

To create a Resource Process Flow diagram from Smart Manipulator of a Function Action or Resource Action

1. In the Swimlane, select a needed Function Action or Resource Action.
2. In the Smart Manipulator toolbar, click Resource Process Flow.

3. The **Select Swimlane Representatives** dialog opens. In the dialog, you can choose the Resource Performer to be represented by the swimlane.



- The **Select Swimlane Representatives** dialog is displayed only when you have a resource structure defined in the Process diagram.
- If you click **Cancel**, the empty diagram will be created.


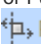
4. Click **OK**.

A new Resource Process Flow diagram is created with a Swimlane and the selected performers as the representatives.

When the Function Action is created in the Swimlane, the `IsCapableToPerform` relationship is created between the Resource Performer and Function (the behavior of the Function Action).

Creating Resource Exchange in Resources Processes Flow diagram

To create a Resource Exchange in the Resources Processes Flow diagram

1. Open the **Realized Resource Exchange** wizard by doing one of the following:
 - Select Function Control Flow or Function Object Flow and on the smart manipulator toolbar click .
 - On the diagram palette, click  **Resource Exchange** and then click Function Control Flow or Function Object Flow.
2. Select the Resource Exchange Kind from one of the following:
 - Command (between Organizational Resources)
 - Control (between Physical Resources)
 - Resource Exchange
3. Specify the Resource Exchange, Conveyed Item, and Direction.



Only Data Element can be a Conveyed Item for the Command and Control relationships.

4. Click **Next** to specify Producing and Consuming Functions.
5. Click **Finish** when you are done.



You can use **Resource Exchange Manager** dialog that enables you to analyze and manage the Resource Exchanges data.

Related pages

- [Swimlanes](#)