

# COR2013

**Abbreviation**

COR2013

**Message**

Operational Activity Action behavior is not defined or is incorrect.

**Description**

Operational Activity Action behavior property should be set to any of Operational Activities.

**Severity**

Error

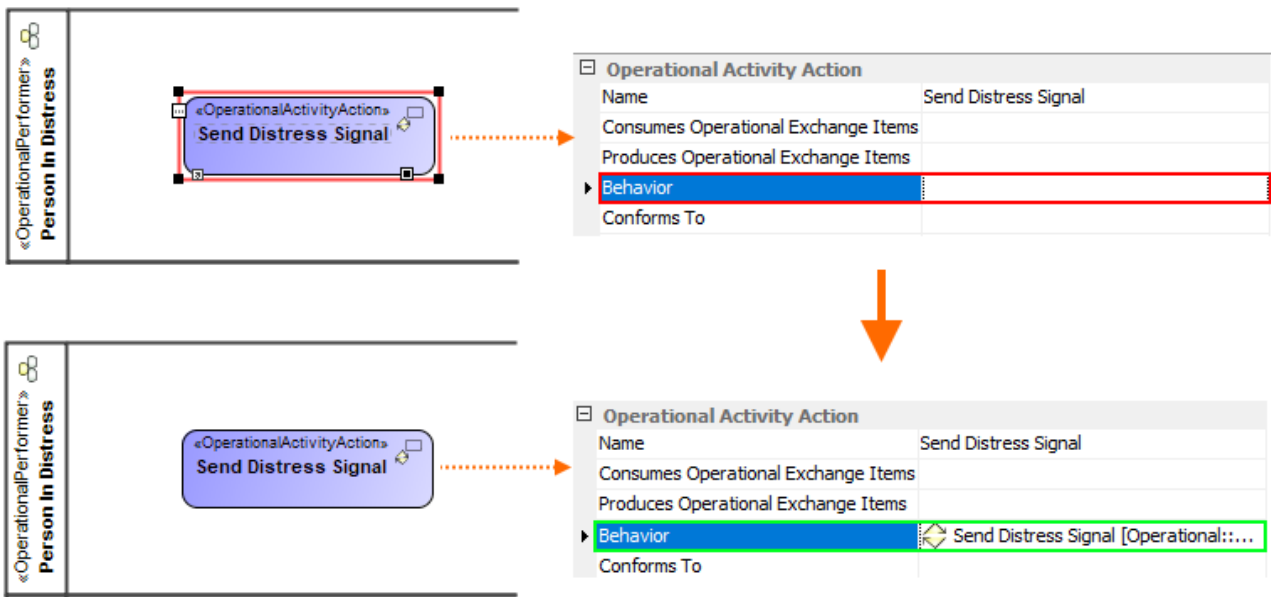
**Context element**

Call Behavior Action

**Solvers**

- **Select Behavior** - select a behavior from your model.
- **Create Behavior** - create a behavior.

**Example**



Behavior of Operational Activity Action is specified using Select Behavior solver