

# COR2030

**Abbreviation**

COR2030

**Message**

Realized Resource Exchange should convey one and only one Resource Exchange Item.

**Description**

Function Edge connecting Pins or Activity Parameters can realize Information Flows that convey only one Exchange Item.

**Severity**

Warning

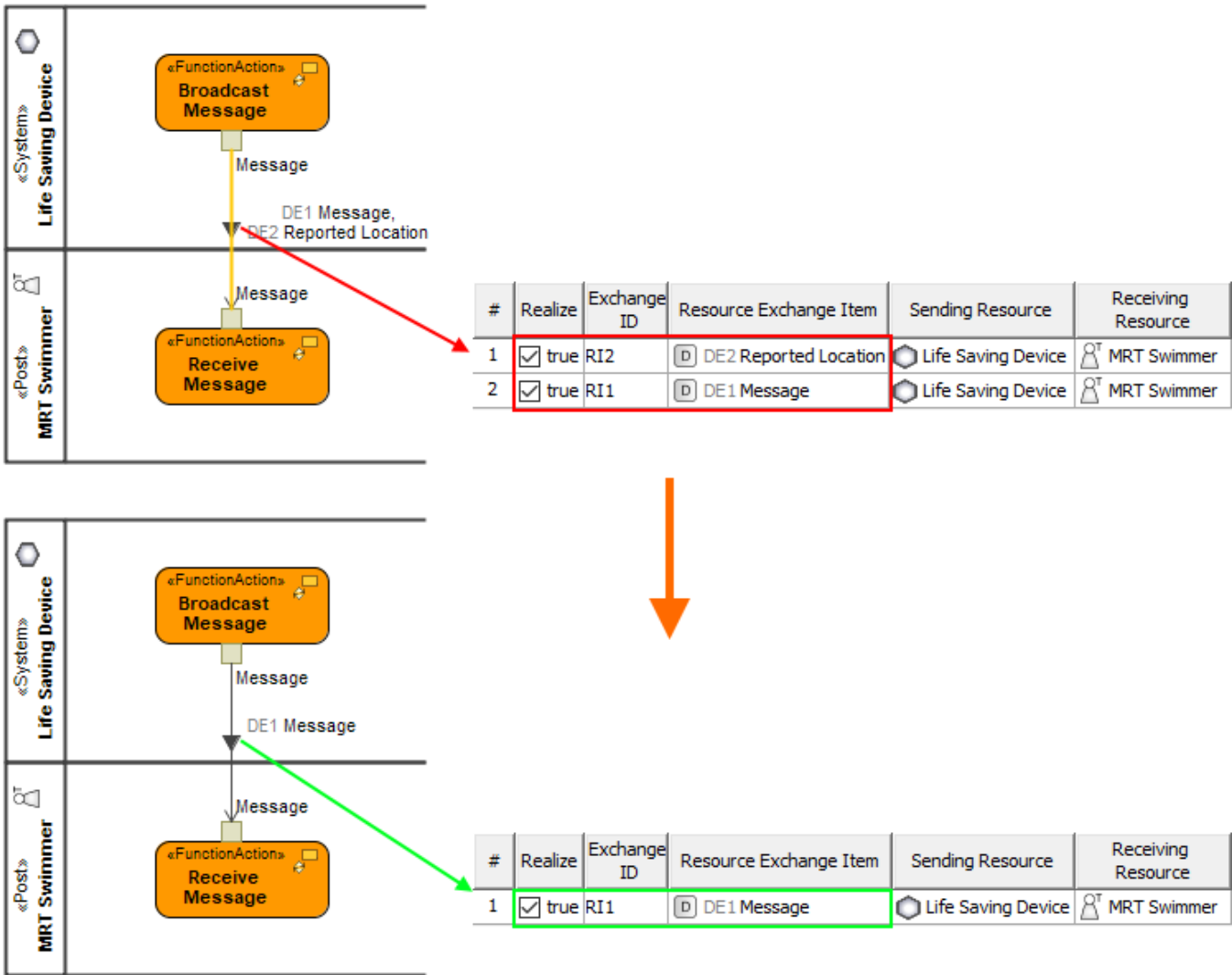
**Context element**

Activity Edge

**Solvers**

- **Remove Conveyed Item** - opens the Select Conveyed Information dialog wherein you can select to remove unnecessary conveyed item.
- **Remove Resource Interaction realization** - removes the realization of conveyed items.

**Example**



Reported Location conveyed item is removed from the Resource Interaction specification