

# NSOV-2 Service Definitions

## Description

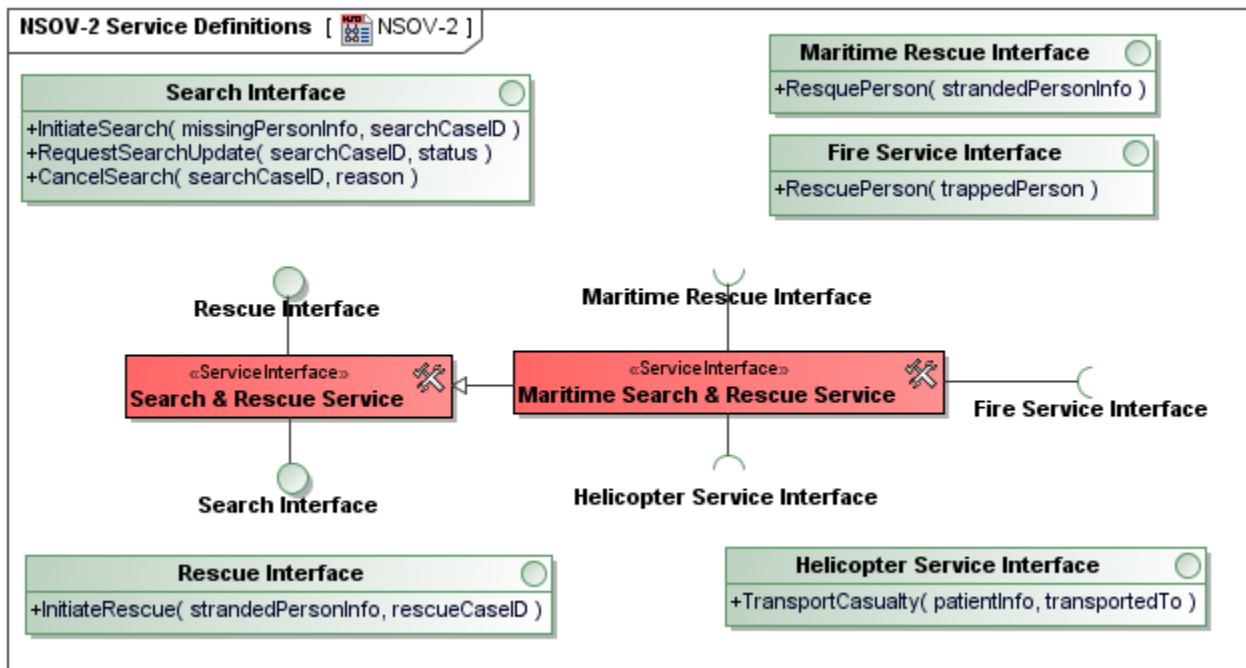
The NSOV-2 view specifies the properties of services and defines the interface of the service explicitly. NMM supports specific stereotypes to manage interfaces, ports as well as asynchronous messages and synchronous operations handling as part of the service interface. It should be noted that only one interface of a service may be exposed to the surrounding environment and that this is the interface that can be accessed by a service consumer.

## Implementation

NSOV-2 can be represented using

- Report which is automatically generated from all data.
- NSOV-2 diagram which is based on the UML Class diagram

## Sample



NSOV-2 Service Definition

## Related elements

- [Service Interface](#)
- [Service Method](#)
- [Flow Property](#)
- [Service Parameter](#)
- [Resource Port](#)