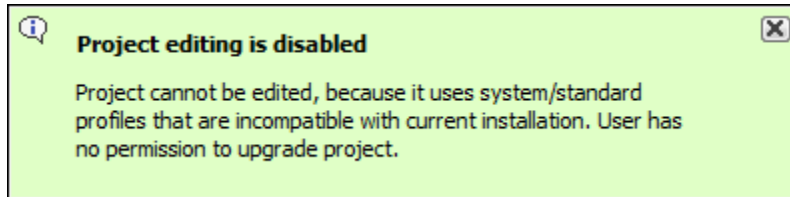


Migrating projects

On this page:

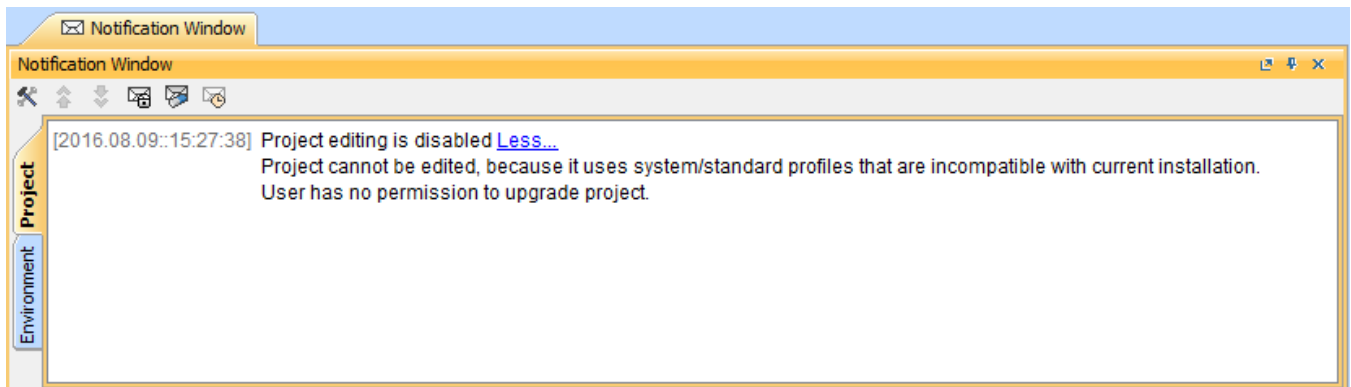
- [Migrating server projects automatically](#)
- [Migrating server projects manually](#)

Once you have successfully [migrated your data](#) to a new version of Teamwork Cloud, you must update the projects in the database as well. A project that is not updated will open in the read-only mode. When you open a project in a modeling tool, the following notification appears.



You will not be able to edit a project until you update the project to the latest version.

You can see the same notification in the Notification Window. Therefore, you must update the project before you can edit it.



Editing a project that has not been upgraded to the latest version is not allowed.



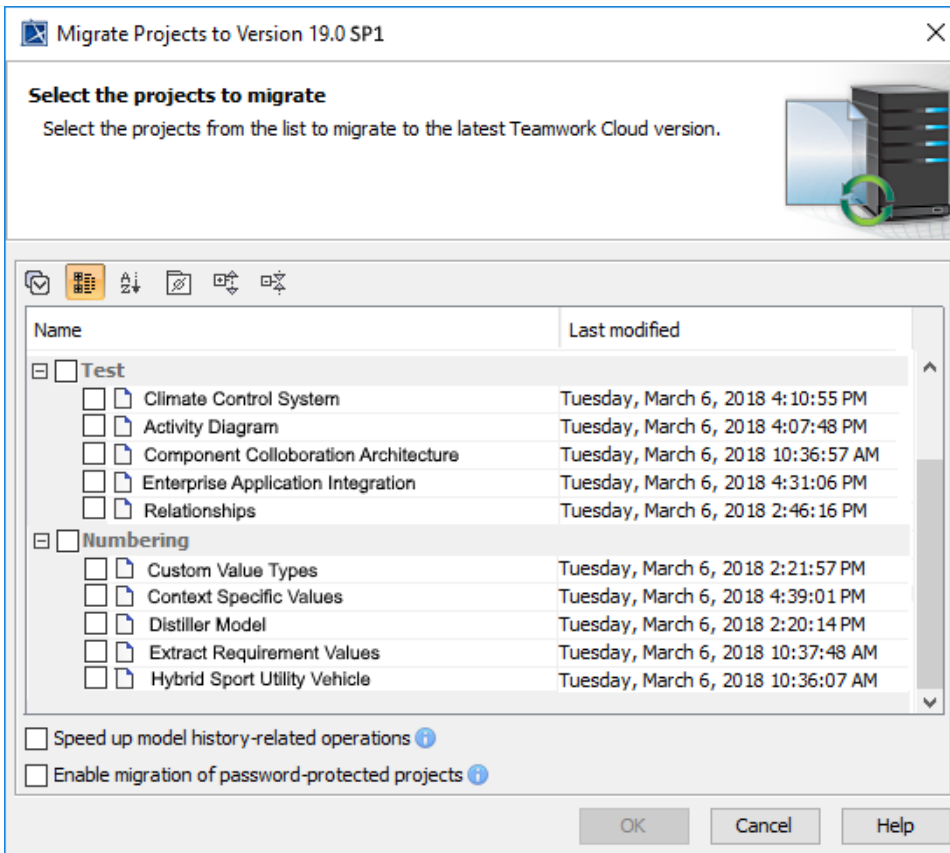
- To upgrade a project by migrating it, you need the Administer Resources, Edit Resources, Edit Resource Properties, and Read Resources [permissions](#).

Migrating server projects automatically


While a project is being migrated, other users are prevented from any modifications in that project. We highly recommend that the same person

To migrate server projects automatically

1. Start the modeling tool and [log in to the Teamwork Cloud server](#).
2. From the **Collaborate** menu, select **Migrate Project to Version X**. The dialog **Migrate Project to Version X** opens.



3. Select projects to migrate. Do one of the following:

- On the dialog toolbar, click  to select all server projects.
- Select category (or categories) to migrate with all projects inside it.
- Select separate projects from category (or categories).

Migration of UAF and UPDM projects

- The UPDM project migration from the modeling tool with the UAF environment will not be performed. However, if you want to migrate the UPDM project to UAF, you need to open the `model.dwg` properties (or `cas.properties`) file and change the value of the custom property `UPDMProjectToUAF` to `True`.



- Select **Speed up model history-related operations** if you want to upgrade caches of earlier model revisions on the server. This is useful if your modeling workflow includes using historical model versions; however, this option may slow down the migration process.

After the project migration, you may find some projects that were not migrated. You must migrate those projects manually.

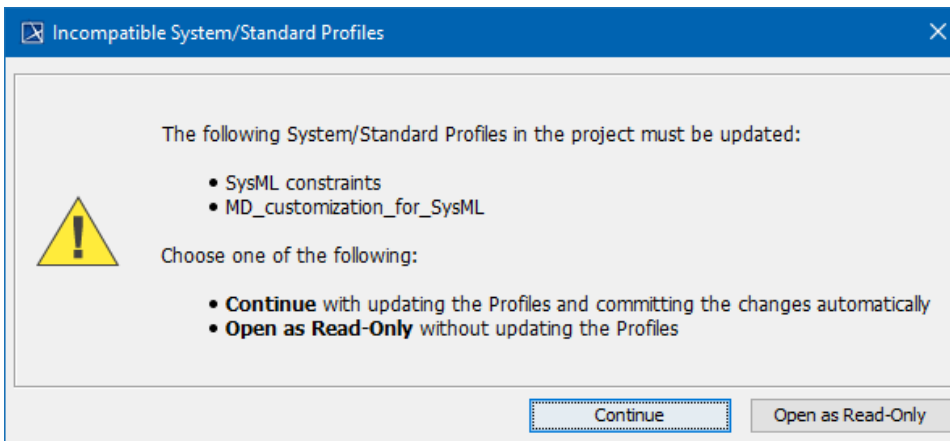
- Select **Enable migration of password-protected projects** to enable selection of password-protected projects. During the migration process,

Migrating server projects manually

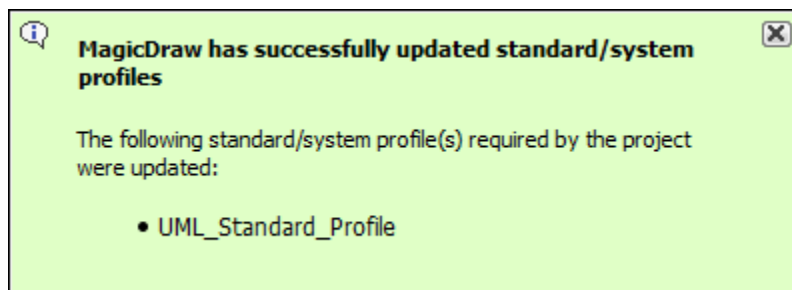
you will be prompted to enter a password for each of the password-protected projects you selected to migrate. If this option is not selected,

To migrate the project manually, for console, you will get [Administer Resources](#) (or [Administer Passwords](#)) dialog box. You must migrate those projects manually.

1. Start the modeling tool and [log in to the Teamwork Cloud server](#).
2. On the main menu, click **Collaborate > Projects**. The [Manage projects](#) dialog opens.
3. Select a project and click **Open**. A dialog prompts you to update the System/Standard Profiles in the project to allow project editing.



4. Click **Continue**. After the System/Standard Profiles are updated, the modeling tool opens a notification showing that the model was successfully updated.



You can also see the same notification in the **Notification Window**.

 You can open the **Notification Window** by pressing Ctrl + M or clicking **Window > Notification Window**.

