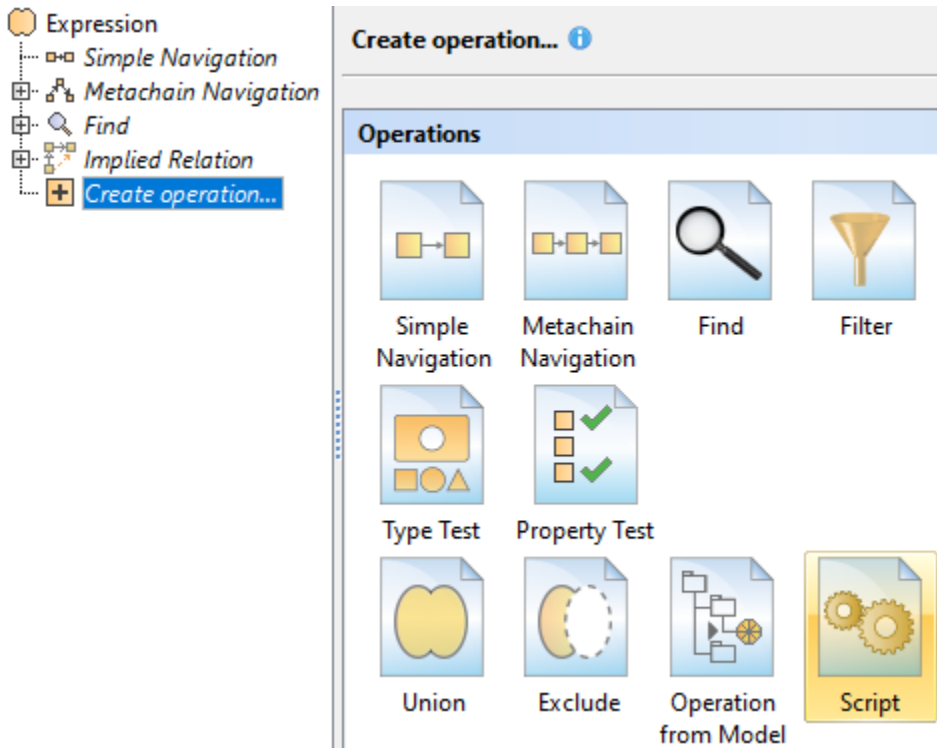


Case 11. Server Project Version in Diagram

To retrieve the Server Project Version in a Diagram

1. Right-click the empty space on the diagram pane and open the **Specification window**.
2. On the left side of the dialog, select **Traceability > Create. Expression** dialog opens.
3. Select **Create operation > Script**.

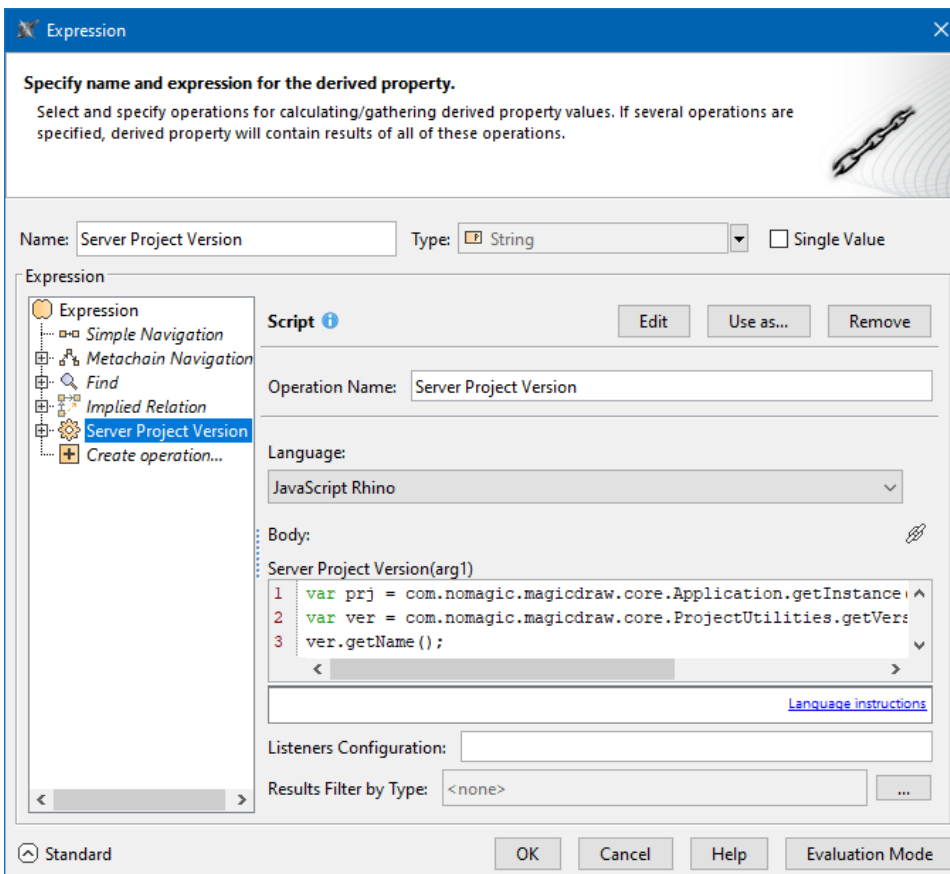
If you cannot see the **Script** operation under **Operations**, make sure the **Expert** mode is enabled.



4. Specify the **Name** for the derived property.
5. Set the **Type** as **String**.
6. Specify the **Operation Name**.
7. From the **Language** drop-down list, select **JavaScript Rhino**.
8. Insert the following script as the **Body**.

JavaScript Rhino

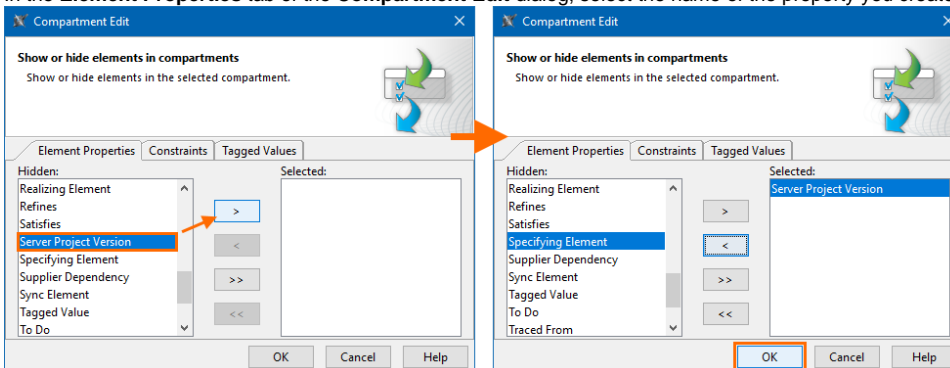
```
var prj = com.nomagic.magicdraw.core.Application.getInstance().getProject().getPrimaryProject();
var ver = com.nomagic.magicdraw.core.ProjectUtilities.getVersion(prj);
ver.getName();
```



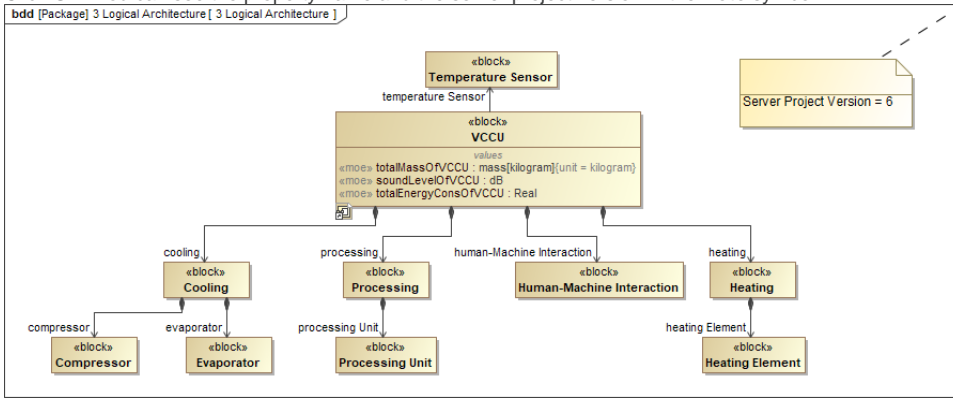
9. Click **OK**.

To display the Server Project Version in a Diagram

1. Create the **Note** symbol in the diagram and anchor it to the diagram.
2. Right-click the **Note** symbol and deselect **Represent Diagram Context (Package)**.
3. (Optional) Right-click the **Note** symbol and deselect **Apply SysML Callout Style**.
4. Right-click the **Note** symbol and select **Edit Compartments**.
5. In the **Element Properties** tab of the **Compartment Edit** dialog, select the name of the property you created.



6. Click **OK**. You can see the property name and the server project version in the **Note** symbol.



Sample model

The model used in these examples is the *Case Studies for Querying the Model* sample model. To open this model, you need to download [case studies for querying the model.mdzip](#).