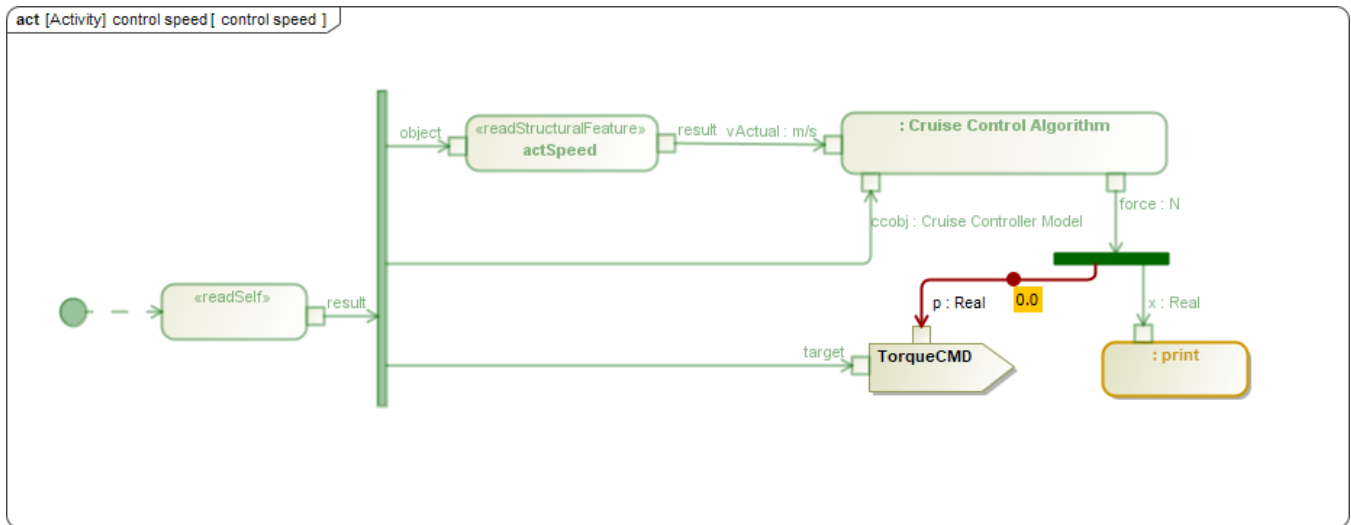


# Active, visited, and last visited elements

On this page

- [Animation of value propagation in the Internal Block diagram](#)

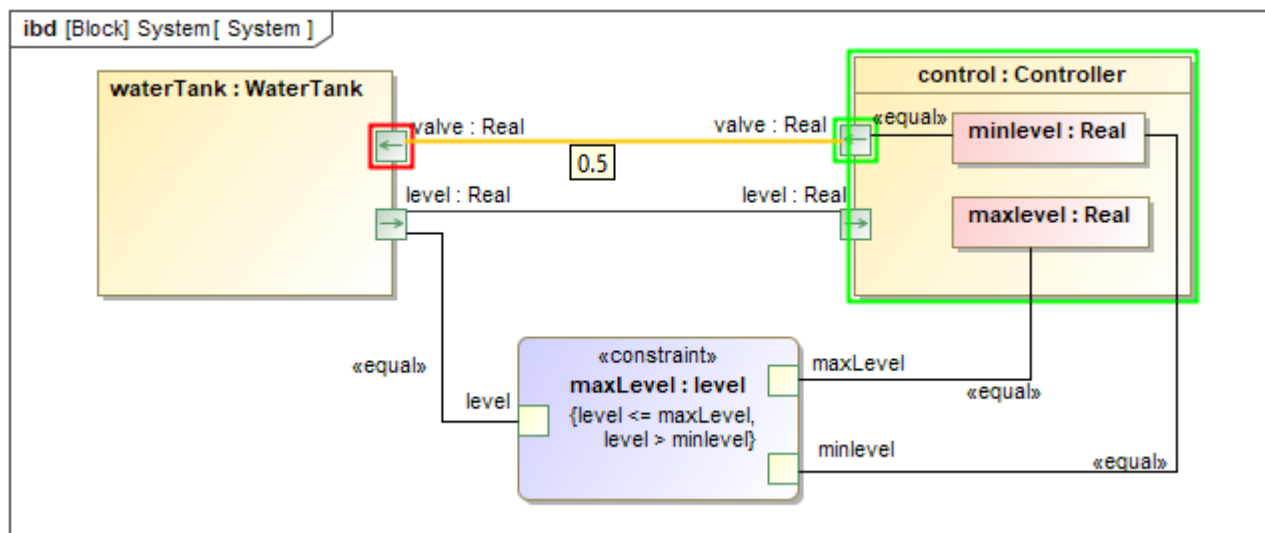
Active Elements are the Elements a simulation session is focusing on (see [Understanding simulation sessions](#) for more information). They can also be considered as the Elements that are currently being simulated in a simulation session. They will be annotated in red by default. Once an active Element has been simulated, it will become a visited Element and will be annotated in green by default. The last visited element will be annotated in orange.



Element animation: active Element is red, last visited Element is orange, and visited Elements are green.

## Animation of value propagation in the Internal Block diagram

Animation of Ports and Connectors in the Internal Block diagram (IBD) when value flows through them is annotated from activating the source part first, and then the Port, Connector, target Port, and target part, as shown in the figure below. Those Ports include regular Ports, flow Ports, and proxy Ports with flow properties. However, initialization will be at full speed and optimized without animation or delays. The value will also be shown as an annotation during the animation.



Animation of value propagation in the Internal Block diagram.

Related page

- [Understanding simulation sessions](#)