

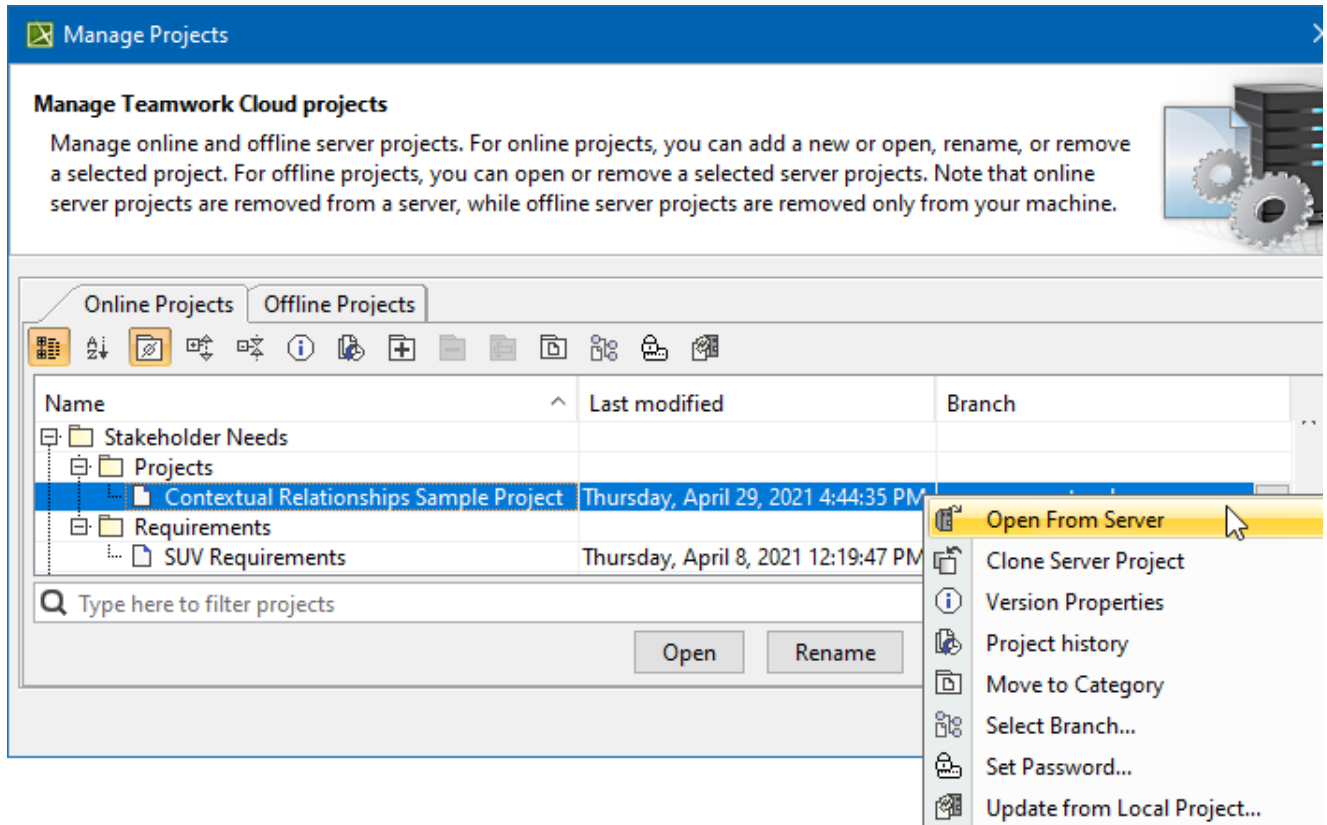
Managing server projects

You can manage your server projects, as well as locally saved server projects (known as [offline server projects](#)), in the **Manage Projects** dialog.

Currently open project is automatically selected in the **Manage Projects** dialog, making it easier to find it in the project list.

To open the **Manage Projects** dialog

1. [Log on to the Teamwork Cloud server.](#)
2. On the main menu, click **Collaborate > Projects**.



✓ You can use the search tab to quickly filter used projects by name.

In the **Manage Projects** dialog, you can:

- For server projects:
 - [Add a new server project](#)
 - [Open a server project](#)
 - [Rename a server project](#)
 - [Remove a server project](#)
 - [Clone a server project](#)
 - [Review and change project versions](#)
 - [Manage server project categories](#)
 - [Manage server project branches](#)
 - [Set a password for a server project](#)
- For offline server projects:
 - [Open a server project](#)
 - [Remove a server project](#)